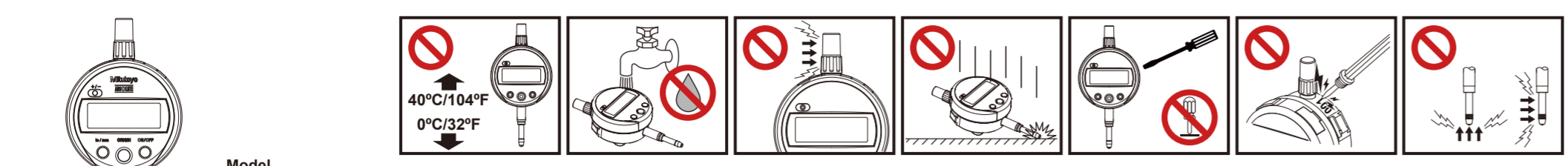
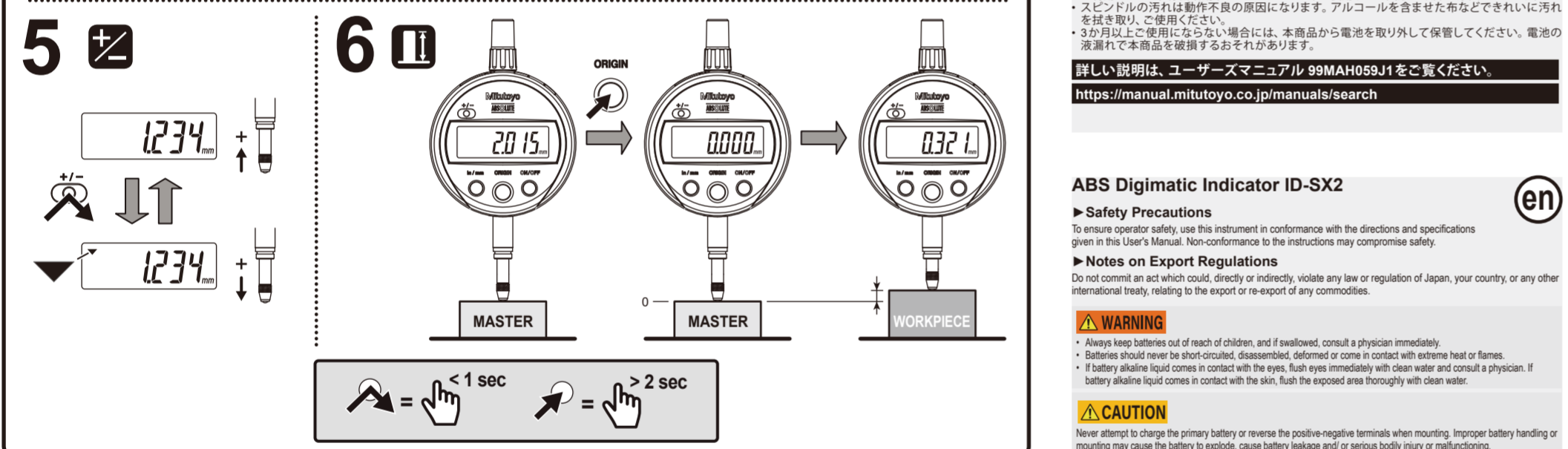
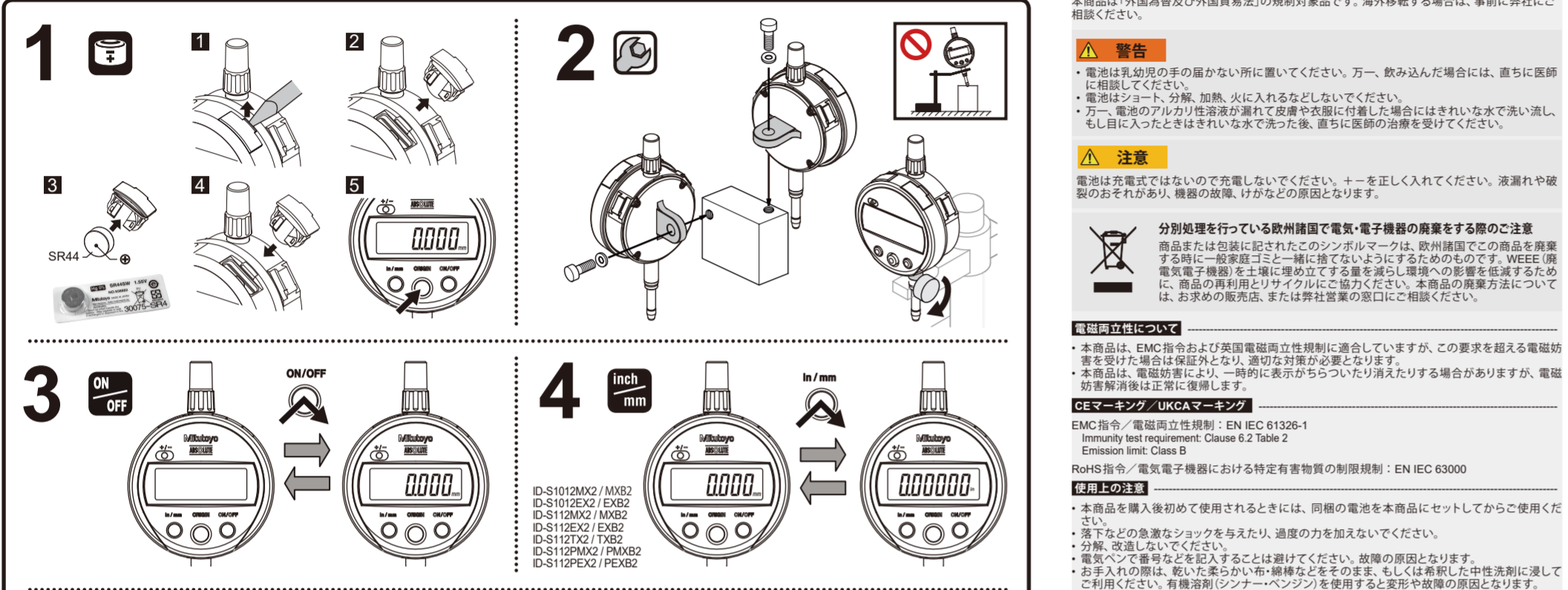


# No. 99MAH059M2 ABS デジマチックインジケータ ID-SX2 クイックスタートガイド



**Model**  
 ID-S1012X2 ID-S1012MXB2 ID-S112X2 ID-S112MXB2 ID-S112TX2 ID-S112PXB2 ID-S112PEX2  
 ID-S1012XB2 ID-S1012EXB2 ID-S112X2 ID-S112EXB2 ID-S112TX2 ID-S112PXB2 ID-S112PEX2  
 ID-S1012MX2 ID-S1012EXB2 ID-S112MX2 ID-S112EXB2 ID-S112PX2 ID-S112PMXB2 ID-S112PEXB2



**99MAH059** ユーザーズマニュアル  
 J User's Manual  
 A Bedienungsanleitung  
 D Manuel d'utilisation  
 L Manuale d'uso  
 S Användarmanual  
 N Gebraükershandleitung  
 E Manual de usuario  
 P Manual do usuário  
 PL Instrukcja obsługi  
 TR Kullanıcı Kılavuzu  
 CZ Návod k obsluze  
 RU Руководство  
 K 사용자 메뉴얼  
 T 說明書  
 C 操作手册  
 VI Hướng dẫn sử dụng  
 ID Panduan Pengguna  
 MS Buku Panduan Pengguna

**Mitutoyo** 保 証 書

Mitutoyo Corporation  
 20-1, Sakado 1-Chome, Takasaki-shi,  
 Kawasachi, Gunma 370-3321, Japan  
 Phone:0274-22-1111

**ONE YEAR WARRANTY**

Product Name: Code No.:

Serial No. Date Purchased:

Mitutoyo Corporation conducts an own Quality Assurance program system based on the requirements of ISO 9001. This product conforms to the Mitutoyo inspection standard and the standard (s) used for the calibration is (are) traceable to the national standard (s).

In the event that this product should fail within one (1) year from the original date of purchase through normal use conforming to the User's Manual provided with the product and Warning Label(s) on the product, we will repair or replace at our option free of charge upon its return to Mitutoyo with this WARRANTY card.

\*Purchaser is requested to fill the blank above and retain the warranty card as a hand. Return card only when requesting Warranty Service.

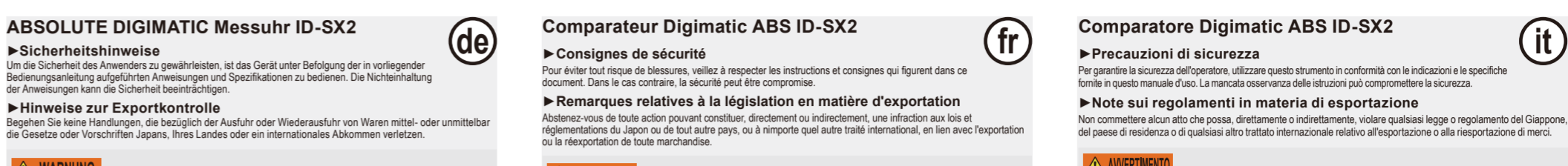
This warranty shall not apply if the product and accessories have been subjected to fair wear and tear, abuse through misuse or improper use/handling/storage/maintenance/service/repair or through adaptation/modification by the original purchaser or any third party without prior written consent of Mitutoyo, or as a result of damage by an actual disaster or circumstances beyond the control of Mitutoyo.

**To obtain service under this warranty the product must be returned to the store/dealer you purchased it along with the warranty card.** Any postage, insurance, or shipping charges incurred in returning the product for service are the responsibility of the purchaser.

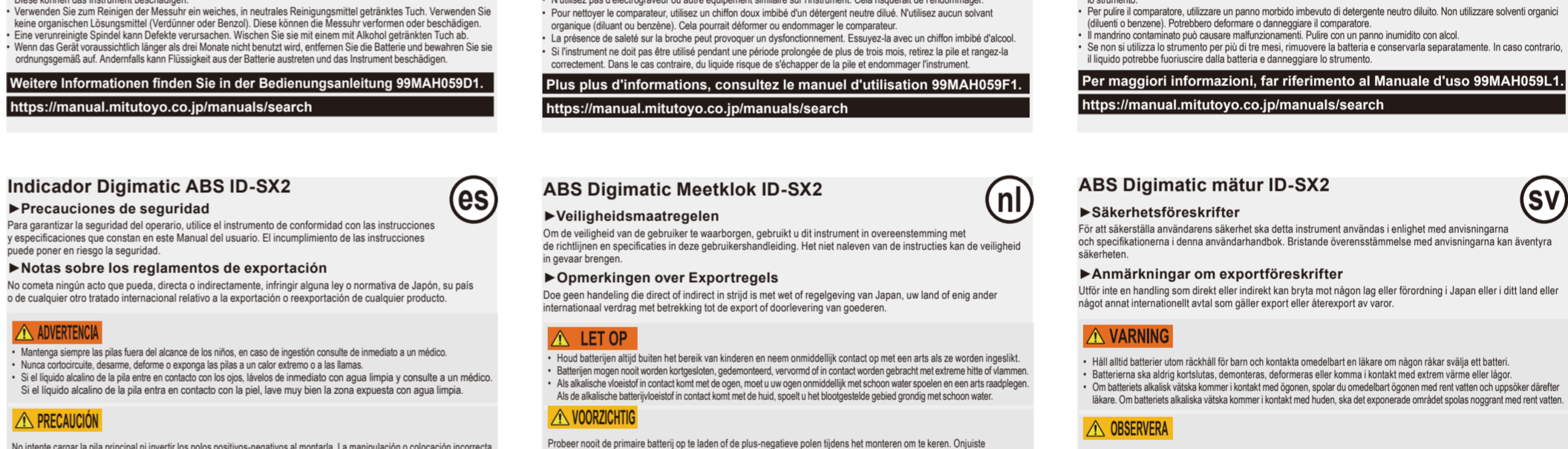
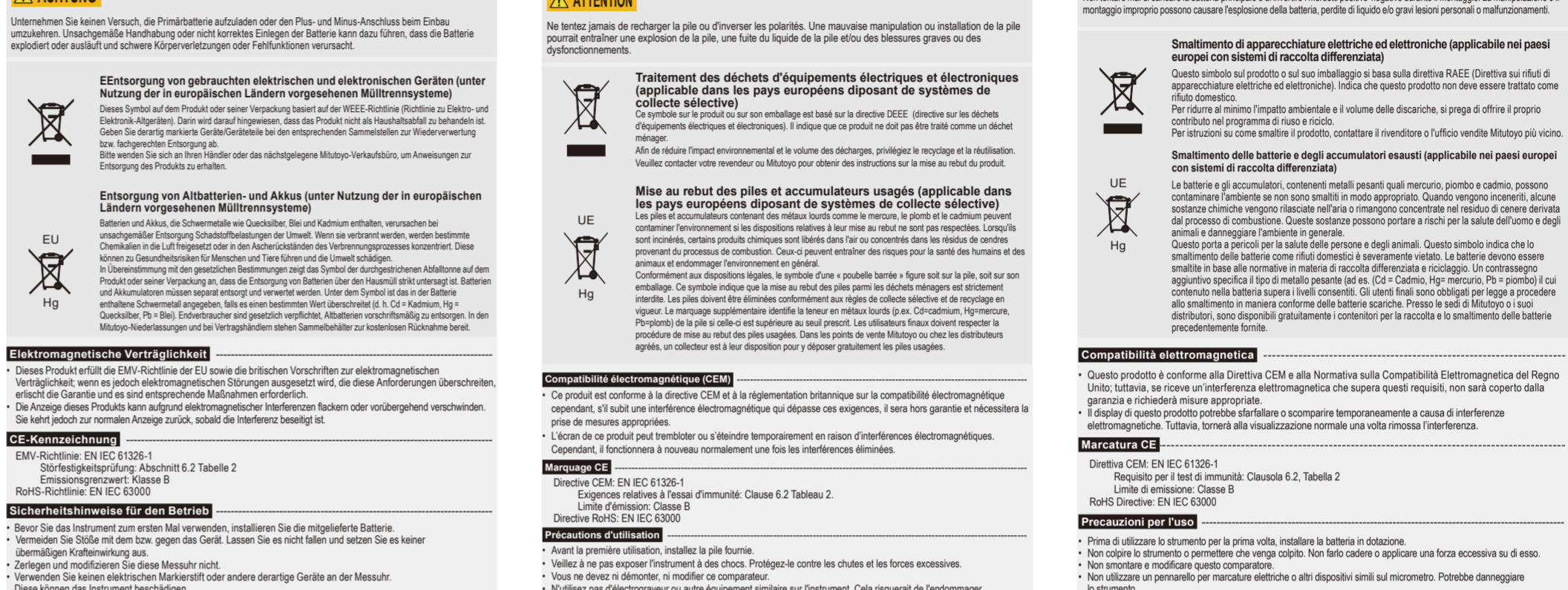
\*This warranty is not transferable and is only valid within the country of the original purchase.

\*\*We may have additional rights under the laws of country of original purchase that do not allow the exclusion of implied warranties of the exclusion or limitation of certain damages. If these laws apply, Mitutoyo's limitations and exclusions may not apply to you.

# No. 99MAH059M2 ABS Digimatic Indicator ID-SX2 Quick Start Guide



**Model**  
 ID-S1012X2 ID-S1012MXB2 ID-S112X2 ID-S112MXB2 ID-S112TX2 ID-S112PXB2 ID-S112PEX2  
 ID-S1012XB2 ID-S1012EXB2 ID-S112X2 ID-S112EXB2 ID-S112TX2 ID-S112PXB2 ID-S112PEX2  
 ID-S1012MX2 ID-S1012EXB2 ID-S112MX2 ID-S112EXB2 ID-S112PX2 ID-S112PMXB2 ID-S112PEXB2



**99MAH059** ユーザーズマニュアル  
 J User's Manual  
 A Bedienungsanleitung  
 D Manuel d'utilisation  
 L Manuale d'uso  
 S Användarmanual  
 N Gebraükershandleitung  
 E Manual de usuario  
 P Manual do usuário  
 PL Instrukcja obsługi  
 TR Kullanıcı Kılavuzu  
 CZ Návod k obsluze  
 RU Руководство  
 K 사용자 메뉴얼  
 T 說明書  
 C 操作手册  
 VI Hướng dẫn sử dụng  
 ID Panduan Pengguna  
 MS Buku Panduan Pengguna

**Mitutoyo** 保 証 書

Mitutoyo Corporation  
 20-1, Sakado 1-Chome, Takasaki-shi,  
 Kawasachi, Gunma 370-3321, Japan  
 Phone:0274-22-1111

**ONE YEAR WARRANTY**

Product Name: Code No.:

Serial No. Date Purchased:

Mitutoyo Corporation conducts an own Quality Assurance program system based on the requirements of ISO 9001. This product conforms to the Mitutoyo inspection standard and the standard (s) used for the calibration is (are) traceable to the national standard (s).

In the event that this product should fail within one (1) year from the original date of purchase through normal use conforming to the User's Manual provided with the product and Warning Label(s) on the product, we will repair or replace at our option free of charge upon its return to Mitutoyo with this WARRANTY card.

\*Purchaser is requested to fill the blank above and retain the warranty card as a hand. Return card only when requesting Warranty Service.

This warranty shall not apply if the product and accessories have been subjected to fair wear and tear, abuse through misuse or improper use/handling/storage/maintenance/service/repair or through adaptation/modification by the original purchaser or any third party without prior written consent of Mitutoyo, or as a result of damage by an actual disaster or circumstances beyond the control of Mitutoyo.

**To obtain service under this warranty the product must be returned to the store/dealer you purchased it along with the warranty card.** Any postage, insurance, or shipping charges incurred in returning the product for service are the responsibility of the purchaser.

\*This warranty is not transferable and is only valid within the country of the original purchase.

\*\*We may have additional rights under the laws of country of original purchase that do not allow the exclusion of implied warranties of the exclusion or limitation of certain damages. If these laws apply, Mitutoyo's limitations and exclusions may not apply to you.

# No. 99MAH059M2

# ABS デジマチックインジケータ ID-SX2 クイックスタートガイド

## Relógio Comparador Digimatic ABS ID-SX2

- Precauções de segurança**
- Notas sobre os Regulamentos de Exportação**

- ATENÇÃO**
- CUIDADO**

Eliminar de equipamentos eléctricos e electrónicos antigos (aplicável nos países europeus com sistemas de coleta seletiva)

Eliminación de baterías ou acumuladores usados (aplicável nos países europeus com sistemas de coleta seletiva)

Compatibilidade eletromagnética

Marcação CE

Precauções de utilização

Para mais informações, consulte o Manual do usuário 99MAH059P1.

https://manual.mitutoyo.co.jp/manuals/search

## Czujnik ABS Digimatic ID-SX2

- Zasady bezpieczeństwa**
- Uwagi dotyczące przepisów eksportowych**

- OSTRZEŻENIE**
- OSTRZEŻENIE**
- OSTRZEŻENIE**

Użyłyzacja zużytego sprzętu elektrycznego i elektronicznego (dotyczy krajów europejskich z innymi systemami zbiórki odpadów)

Użyłyzacja zużytych baterii i akumulatorów (dotyczy krajów europejskich z innymi systemami zbiórki odpadów)

Compatibilidade eletromagnética

Marcação CE

Precauções de utilização

Para mais informações, consulte o Manual do usuário 99MAH059P1.

https://manual.mitutoyo.co.jp/manuals/search

## ABS Digimatic Komparatör Saati ID-SX2

- Güvenlik Önemleri**
- İhracat Düzümlerini Hakkinda Notlar**

- YARARI**
- DIKKAT**

Eski Elektrikli ve Elektrikli Çihazların Atılması (ayrı toplama sistemleri bulunan Avrupa ülkelerinde geçerli olduğu sekilde)

Uzunlu kullanimdan önce temizleme ve/veya pilin kontrolu

CE İhracatları

CE İhracatları

Precauções de utilização

Para mais informações, consulte o Manual do usuário 99MAH059P1.

https://manual.mitutoyo.co.jp/manuals/search

# No. 99MAH059M2

# ABS Digimatic Indicator ID-SX2 Quick Start Guide

## ABS 数显指示器 ID-SX2

- 安全须知**
- 出口管制条例**

- 警告**
- 注意**

旧电气和电子设备处置(适用于单独收集系统的欧洲国家)

电磁兼容性

CE标志

使用注意事项

产品信息

部件名称

更多信息, 请参见 99MAH059G1 的用户手册。

## ABS 指示灯 ID-SX2

- 安全须知**
- 出口管制条例**

- 警告**
- 注意**

旧电气和电子设备处置(适用于单独收集系统的欧洲国家)

电磁兼容性

CE标志

使用注意事项

产品信息

部件名称

更多信息, 请参见 99MAH059G1 的用户手册。

## Penunjuk Digimatic ABS ID-SX2

- Perhatian Keselamatan**
- Notis mengenai Peraturan Eksport**

- AMARAN**
- PERHATIAN**

Polupusan peralatan elektrik dan elektronik lama (diterima paka di negara-negara Eropah dengan sistem pengumpulan limbah terpisah)

Compatibilidade eletromagnética

Marcação CE

Precauções de utilização

Para mais informações, consulte o Manual do usuário 99MAH059P1.

https://manual.mitutoyo.co.jp/manuals/search

## ABS Digimatic Indikator ID-SX2

- Bezpečnostní pokyny**
- Poznámky k vývozním předpisům**

- VAROVÁNÍ**
- UPOZORNĚNÍ**

Likvidace starých elektrických a elektronických zařízení (platí v evropských zemích se systémy tříděného odpadu)

Likvidace odpadních baterií a akumulátorů (platí v evropských zemích se systémy tříděného odpadu)

Compatibilidade eletromagnética

Marcação CE

Precauções de utilização

Para mais informações, consulte o Manual do usuário 99MAH059P1.

https://manual.mitutoyo.co.jp/manuals/search

## Индикатор ABS Digimatic ID-SX2

- Правила техники безопасности**
- Примечания к правилам экспорта**

- ПРЕДУПРЕЖДЕНИЯ**
- ВНИМАНИЕ**

Utilizacija starých elektrických a elektronického oborudovanja (v evropských stranah s razdelno sistemom zbiranja odpadov)

Utilizacija ispoljovanih baterija i akumuljatorov (v evropskih stranah s razdelno sistemom zbiranja odpadov)

Compatibilidade eletromagnética

Marcação CE

Precauções de utilização

Para mais informações, consulte o Manual do usuário 99MAH059P1.

https://manual.mitutoyo.co.jp/manuals/search

## ABS 디지매틱 인디케이터 ID-SX2

- 안전 예방 수칙**
- 해외 이전에 관한 주의**

- 경고**
- 주의**

Uzitiq starých elektrických a elektronického oborudovanja (v evropských stranah s razdelno sistemom zbiranja odpadov)

Uzitiq ispoljovanih baterija i akumuljatorov (v evropskih stranah s razdelno sistemom zbiranja odpadov)

Compatibilidade eletromagnética

Marcação CE

Precauções de utilização

Para mais informações, consulte o Manual do usuário 99MAH059P1.

https://manual.mitutoyo.co.jp/manuals/search

## ABS 數位式指示量錶 ID-SX2

- 安全注意事項**
- 有關出口管制的注意事項**

- 警告**
- 注意**

廢棄舊電氣和電子設備 (適用於具有垃圾分類處理規定的歐洲國家)

電磁兼容性

CE 標誌

使用注意事項

產品名稱

更多信息, 請參閱操作手冊 99MAH059C1。

https://manual.mitutoyo.co.jp/manuals/search

## Đồng hồ số điện từ ABS ID-SX2

- Biên pháp An toàn**
- Lưu ý về Quy định Xuất khẩu**

- CẢNH BÁO**
- CHÚ Ý**

Tinh lượng thích điện từ

Chú ý khi sử dụng

Thông tin chi tiết, tham khảo Hướng dẫn sử dụng 99MAH059V1.

https://manual.mitutoyo.co.jp/manuals/search

## Indikator Digimatic ABS ID-SX2

- Peringatan Keselamatan**
- Catatan pada Peraturan Eksport**

- PERINGATAN**
- PERINGATAN**

Pembuangan limbah peralatan listrik & elektronik (berlaku di negara-negara Eropah dengan sistem pengumpulan limbah terpisah)

Compatibilidade eletromagnética

Marcação CE

Precauções de utilização

Para mais informações, consulte o Manual do usuário 99MAH059P1.

https://manual.mitutoyo.co.jp/manuals/search