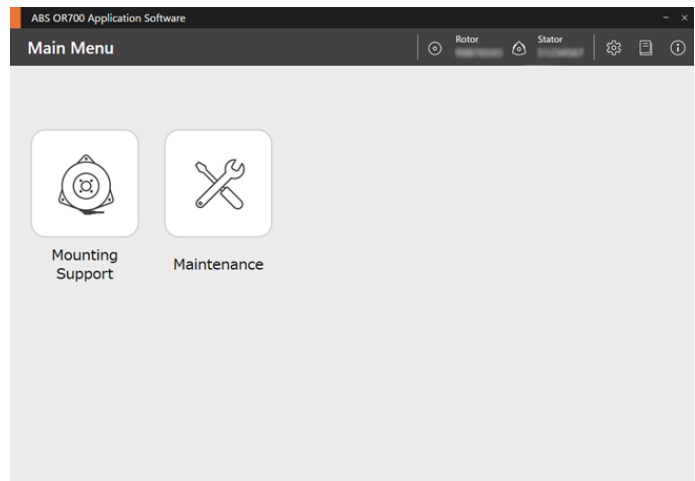




ABS OR700 Application Software



User's Manual - Instructions for use -

Read this document thoroughly before operating the product. After reading, retain it close at hand for future reference.

This English language version of the document contains the original instructions.

No. 99MBE217A

Date of publication: October 1, 2025 (1)



■ Product names and part numbers covered in this document

Product name	Part No.
ABS OR700 Application Software	06AHL743

■ Notice regarding this document

- Mitutoyo Corporation assumes no responsibilities for any damage to the product, caused by its use not conforming to the procedure described in this document.
- Upon loan or transfer of this product, be sure to attach this document to the product.
- In the event of loss or damage to this document, immediately contact the agent where you purchased the product or a Mitutoyo sales office (☎ "SERVICE NETWORK" on page App-1).
- Read this document thoroughly before operating the product.
- The contents of this document are based on information current as of October 2025.
- No part or whole of this document may be transmitted or reproduced by any means without prior written permission of Mitutoyo Corporation.
- Some screen displays in this document may be highlighted, simplified or partially omitted for convenience of explanation. In addition, some of them may differ from actual ones to the extent that no user will misunderstand the functions and operations.
- Acrobat Reader is recommended for viewing PDF user's manuals.
- The corporation, organization and product names that appear in this document are their trademarks or registered trademarks.

©2025 Mitutoyo Corporation. All rights reserved.

Contents

Contents	1
Software End User Agreement	3
About This Document	6
Conventions Used in This Document	7
Precautions for Use	9
Electromagnetic Compatibility (EMC)	9
Export Control Compliance	9
Notes on Export to European Countries	9
Disposal of Products outside the European Countries	10
Disposal of Old Electrical & Electronic Equipment (Applicable in the European Countries with Separate Collection Systems)	10
China RoHS Compliance Information	10
1 Overview	11
1.1 Main Functions	11
1.2 Compatible Models	11
1.3 Preparing for Installation	12
1.4 How to Use the Adjustment Tool	12
1.5 Installing the Application Software	13
2 Installation Adjustment	17
2.1 Installation Procedure	18
2.2 Connecting to the PC	19
2.3 Starting the Application Software	20
2.4 Verifying the Rotor Mounting Status	22
2.5 Stator Position Adjustment and Securing	25
2.5.1 Height/Tilt Adjustment	26
2.5.2 Eccentricity Adjustment	27
2.5.3 Stator Securing	28
2.6 Final Check and Calibration	30
2.7 Exiting the Application Software.....	32
2.8 Setting the Display Language and Data Storage Location	33
2.9 Viewing the Manual	34

2.10	Viewing the Software Version.....	35
3	Maintenance	37
3.1	Maintenance Functions	37
3.2	Calibration	39
3.3	Check the Mounting Status	43
3.4	Check Signal Strength	48
3.5	Check and Clear the Error Log	51
3.6	Display Angle Information	53
4	Error Messages.....	55
5	Troubleshooting	57
	SERVICE NETWORK	App-1

Software End User Agreement

IMPORTANT

Please read this Software End User License Agreement (hereinafter "Agreement") carefully before using ABS OR700 Application Software ("Software").

This Agreement constitutes an agreement between a user of the Software ("User") and Mitutoyo Corporation ("Mitutoyo"). The User is deemed to have agreed to be bound by and will comply with the provisions of this Agreement if the User clicks the "Agree" button, downloads the Software, installs the Software or uses any part of the Software.

If the User does not agree with any part of this Agreement, the User should not click the "Agree" button, download the Software, install the Software or use any part of the Software.

Under the condition that the User agrees with the entirety of this Agreement, the User may use the Software in accordance with the provisions

1. License

Under the conditions provided in this Agreement, Mitutoyo grants the User a non-transferable and non-exclusive license limited to the installation and use of a copy (in an object code format only) of the Software in a computer system. The User shall agree that Mitutoyo, its affiliated and related companies and/or its suppliers shall reserve the only and exclusive rights, ownership and interest to and in the Software. The User shall also agree that the User does not possess any rights, ownership or interest to and in the Software except for the right to use it granted by the provisions of this Agreement. Mitutoyo shall reserve any other rights not explicitly granted to the User by Mitutoyo in this Agreement.

2. Restrictions

EXCEPT FOR THE CASES EXPLICITLY PERMITTED IN THIS AGREEMENT, THE USER MAY NOT PRINT OR DUPLICATE ANY OR ALL PARTS OF THE SOFTWARE, ALTER THE SOFTWARE, REVERSE COMPILER, REVERSE ASSEMBLE OR OTHERWISE REVERSE ENGINEER ANY OR ALL PARTS OF THE SOFTWARE.

IN ADDITION, THE USER MAY NOT LEND, LEASE, SUBLICENSE, DISTRIBUTE OR SELL THE SOFTWARE OR PRODUCE ANY DERIVATIVE WORKS FROM THE SOFTWARE.

3. Copyright

The copyright to the Software exclusively belongs to Mitutoyo, its affiliated and related companies and/or its suppliers. The User may not remove, alter or otherwise modify any of the copyright, trademark or other intellectual property right notices from any part of the Software.

4. Warranty

The Software shall be provided "as is." In case Mitutoyo finds anything in the Software that Mitutoyo believes to critically affect any of its material functions, however, Mitutoyo may at its sole discretion provide a revised version of the Software through its homepage.

The entire remedy for the User as well as the responsibility of Mitutoyo, its affiliated and related companies and/or its suppliers, under this Warranty shall be limited to the preceding paragraph in this section. Under no circumstances shall Mitutoyo guarantee that this Software is error free or that the User may be able to use the Software without any difficulties or hindrances, or that this Software may be used in connection with any third party hardware or software products.

This warranty shall not be applied if the Software or its components, elements or any apparatus that is designed to be used with the Software are (a) altered or modified, (b) not installed, used, repaired or maintained according to the instructions provided from Mitutoyo, (c) exposed to abnormal physical or electrical stress, misuse, negligence or accident or (d) used in an excessively dangerous activity.

Any warranty provided to the apparatus or hardware that this Software is installed in shall not expand or otherwise modify this warranty or any right of the User unless explicitly stated to the contrary in this Agreement.

EXCEPT FOR THE WARRANTY PROVIDED IN THIS SECTION, ANY EXPLICIT OR IMPLICIT CONDITIONS, REPRESENTATION OR WARRANTY OF ANY NATURE (INCLUDING BUT NOT LIMITED TO THE WARRANTY OF MERCHANTABILITY, WARRANTY OF FITNESS FOR A PARTICULAR PURPOSE, WARRANTY OF NON-INFRINGEMENT OR WARRANTY THAT MAY ARISE THROUGH THE TRANSACTION, USE OR TRADE PRACTICES) SHALL BE EXCLUDED TO THE EXTENT PERMITTED UNDER THE APPLICABLE LAWS.

The User shall be responsible for any and all results arising from choosing the Software in order to achieve the intended purpose(s) of the User.

5.Disclaimer

UNDER NO CIRCUMSTANCES ARE MITUTOYO, ITS AFFILIATES AND THEIR SUPPLIERS RESPONSIBLE FOR ANY SPECIAL, DIRECT, INDIRECT, CONSEQUENTIAL, INCIDENTAL, OR PUNITIVE DAMAGES ARISING FROM THE USE OR INABILITY TO USE THE SOFTWARE REGARDLESS OF ITS CAUSE OR THE RESPONSIBILITY THEORY EVEN IF MITUTOYO, ITS AFFILIATES OR THEIR SUPPLIERS HAVE BEEN NOTIFIED OF THE POSSIBILITY OF SUCH DAMAGES.

EXCLUSION OR LIMITATION OF CONSEQUENTIAL OR INCIDENTAL DAMAGES MAY NOT BE PERMITTED IN CERTAIN COUNTRIES, STATES OR JURISDICTIONS. THE RESPONSIBILITY OF MITUTOYO, ITS AFFILIATED AND RELATED COMPANIES AND/OR ITS SUPPLIERS IN SUCH COUNTRIES, STATES OR JURISDICTIONS SHALL BE EXCLUDED OR LIMITED TO THE MAXIMUM EXTENT PERMITTED UNDER THE APPLICABLE LAWS.

6.Termination of the Agreement

The User's right to use the Software under this Agreement shall remain effective until terminated. The User may terminate this Agreement by destroying all of the User's copies of the Software.

This Agreement shall be terminated immediately upon notice from Mitutoyo if the User breaches any of the provisions of this Agreement. Upon termination of the Agreement, the User shall destroy all of the User's copies of the Software (including all of their media and documents).

7.Export control

This Software shall be treated under the export control laws of Japan and applicable export/import control laws of other countries. The User shall strictly observe all applicable rules and shall recognize their responsibility to obtain any licenses required to export, re-export or import the Software.

8.Others

This Agreement shall be governed by the laws of Japan except for the Act on General Rules for Application of Laws and other laws regarding the conflict of law rules. The User shall agree to the exclusive jurisdiction of Tokyo District Court for any conflicts, disagreements or claims arising from or related to this Agreement or rights or obligations of the parties thereunder. The United Nations Convention on Contracts for the International Sale of Goods shall not be applicable to this Agreement. In case any part of this Agreement is found invalid or unenforceable, the remaining provisions of this Agreement shall remain fully valid and enforceable.

The Software Product may include open source software provided under a license different from this EULA ("Open Source Software License Terms"). Notwithstanding the other provisions of this EULA: (i) the aforementioned open source software is covered by the Open Source Software License; (ii) the aforementioned open source software is provided "AS IS" ; (iii) MITUTOYO, ITS AFFILIATED AND RELATED COMPANIES AND SUPPLIERS HEREBY DISCLAIM ALL EXPRESS OR IMPLIED CONDITIONS, REPRESENTATIONS, AND WARRANTIES OF ANY NATURE WHATSOEVER INCLUDING, WITHOUT LIMITATION, ANY IMPLIED WARRANTY OF MERCHANTABILITY, FITNESS FOR A PARTICULAR PURPOSE, NON-INFRINGEMENT OR WARRANTY ARISING FROM A COURSE OF DEAL-

ING, USAGE, OR TRADE PRACTICE; and (iv) the copyright of the aforementioned open source software belongs to a third party.

If this Software Product is a "work that uses the library" under the GNU LESSER GENERAL PUBLIC LICENSE Version 2.1 or a "Combined Work" under the GNU LESSER GENERAL PUBLIC LICENSE Version 3, the reverse engineering and /or modification of the Software Product is permitted, notwithstanding anything contained to the contrary in the provision of Section 2, Paragraph 1 of this EULA, to the extent necessary for Customer's own use and modifications of, linking an application with, and debugging the LGPL library in this Software Product.

This Agreement shall constitute the entire agreement between the User and Mitutoyo for this subject matter.

The User shall compensate, protect and indemnify Mitutoyo for any claims or responsibility of any nature arising from the User's breach of this Agreement.

About This Document

■ Positioning of this document

This describes the positioning of this document and its relationship with other installments.

ABS OR700
User's Manual (simplified version)

This is a simplified instruction manual. It is included with the ABS OR700.

ABS OR700
User's Manual

This manual provides information on hardware specifications and installation procedures for the ABS OR700.

ABS OR700
Application Software
User's Manual (this document)

This manual explains how to operate the application software.

■ Intended readers of this document

This manual is intended for users who are using the ABS OR700 Application Software for the first time. The readers are assumed to have been familiar with basic operations on a PC and Windows. They are also assumed to be able to understand individual instructions by reading the described drawings.

Conventions Used in This Document

■ Safety reminder conventions warning against potential hazards

NOTICE

Indicates a situation which, if not avoided, may result in property damage.

■ Conventions indicating referential information or reference location

IMPORTANT

Indicates information that must be known when using the product.

Tips

Indicates further information and details relevant for the operating methods and procedures explained in that section.



Indicates reference location if there is information that should be referred to in this document or an extraneous User's Manual.

Example: For details about XX, see "1.1 Appellations for Each Part" on page 5 in "1 Overview".

■ Other conventions

(): **Round brackets**

Represent a paraphrase of an immediately preceding phrase or a supplementary explanation.

" ": **Double quotation marks**

Represent a highlighted phrase. They also indicate an index where information to be referenced is described.

[]: **Square brackets**

Represents items displayed on the screen (menus, dialogs, buttons, tabs, etc.) and keys on the controller or keyboard. They also indicate an item to be purposely entered or selected by the customer. Furthermore, they indicate key switches on JSBOX (joystick box).

1, 2, 3
1, 2, 3, ...

Indicates the order and the contents of tasks.
(**1**: indicates main tasks, **1**: indicates detailed tasks)

»

Indicates the action resulted from some operation(s).

■ Example of conventions use

X Operation

X Operation

X.X Precautions for Use

X.X.X Connecting the Power Cable

Mitutoyo service personnel or the agent where you purchased the product will connect the power cable at the installation of the main unit.

IMPORTANT
Use only the power cable that is supplied with this product.

Tips
In case of emergency or for maintenance purposes, after unplugging the power cable from the AC inlet, plug it in again.

X.X.X Mounting the Probe

Mount the probe onto the probe head by "auto joint connection". This section explains connection procedure.

CAUTION
There is a risk of injury due to accidents that accompany the movements of the probe.

! Turn off the main unit before mounting the probe.

NOTICE
There is a risk of damage to this product due to the instability of input signals.

! Turn off the main unit before mounting the probe even if the input signals are disabled.

- 1** Make sure that the keyway on the rear of the probe is set to the unlock position.
- 2** Align the marks on the probe head and the probe.
- 3** Using the accessory tool, turn the keyway on the rear of the probe to the lock position.

» The probe mounting is completed.

XX
No. XXXXXXXXXX

Important information

Supplementary information

Indicates an alert.

Indicates an alert.

Indicates an operating procedure to be performed or its outline.

A ">>" mark at the beginning of a sentence indicates the result of an operation.

X

Operation

Precautions for Use

■ Purpose and use of this application software

- This application software is for use exclusively with the ABS OR700 Rotary Encoder. Do not use it with any measuring equipment other than the ABS OR700 Rotary Encoder.
- This dedicated application software is designed to support mounting adjustment and post-installation maintenance of the ABS OR700 Rotary Encoder. Do not use it for any purpose than those indicated above.

■ Backing up important data

NOTICE

Be sure to back up important data regularly to external storage media.

Data can be corrupted or lost for a variety of reasons. Please understand that we cannot be held responsible for any damage or loss of data, regardless of the cause.

Electromagnetic Compatibility (EMC)

This product complies with the EMC Directive and the UK Electromagnetic Compatibility Regulations. However, if it is exposed to electromagnetic interference that exceeds the limits specified in these directives and regulations, the warranty will be invalidated and appropriate measures will be required.

This product is an industrial product, and is not intended to be used in residential environment. If this product is used in residential environment, this product may cause electromagnetic interference with other instruments. In such a case, it is required to take appropriate measures for preventing such electromagnetic interference.

Export Control Compliance

This product falls into the Catch-All-Controlled Goods and/or Catch-All-Controlled Technologies (including Programs) under Category 16 of Appended Table 1 of Export Trade Control Order or under Category 16 of Appended Table of Foreign Exchange Control Order, based on Foreign Exchange and Foreign Trade Act of Japan.

If you intend re-export of the product from a country other than Japan, re-sale of the product in a country other than Japan, or re-providing of the technology (including Programs), you shall observe the regulations of your country.

Also, if an option is added or modified to add a function to this product, this product may fall under the category of List-Control Goods, List-Control Technology (including Programs) under Category 1 - 15 of Appended Table 1 of Export Trade Control Order or under Category 1 - 15 of Appended Table of Foreign Exchange Control Order, based on Foreign Exchange and Foreign Trade Act of Japan. In that case, if you intend re-export of the product from a country other than Japan, re-sale of the product in a country other than Japan, or re-providing of the technology (including Programs), you shall observe the regulations of your country. Please contact Mitutoyo in advance.

Notes on Export to European Countries

When you intend exporting of this product to any of the European countries, it may be required to provide User's Manual(s) in English and Declaration of Conformity in English (in some cases, the official language of the country to be exported). For detailed information, please contact Mitutoyo in advance.

Disposal of Products outside the European Countries

Please follow the official instruction in each community and country.

Disposal of Old Electrical & Electronic Equipment (Applicable in the European Countries with Separate Collection Systems)



This symbol on the product or on its packaging is based on WEEE Directive (Directive on Waste Electrical and Electronic Equipment), and this symbol indicates that this product shall not be treated as household waste.



To reduce the environmental impact and minimize the volume of landfills, please cooperate in reuse and recycle.

For how to dispose of the product, please contact the agent where you purchased the product or a Mitutoyo sales office.

China RoHS Compliance Information

This product meets China RoHS requirements. See the table below.

产品中有害物质的名称及含量

部件名称	有害物质					
	铅 (Pb)	汞 (Hg)	镉 (Cd)	六价铬 (Cr(VI))	多溴联苯 (PBB)	多溴二苯醚 (PBDE)
本体	○	○	○	○	○	○
电气设备部分	×	○	○	○	○	○
配件	○	○	○	○	○	○

部件名称	有害物质			
	邻苯二甲酸 二正丁酯 (DBP)	邻苯二甲酸 二异丁酯 (DIBP)	邻苯二甲酸 丁基苯酯 (BBP)	邻苯二甲酸 二(2-乙基己)酯 (DEHP)
本体	○	○	○	○
电气设备部分	○	○	○	○
配件	○	○	○	○

本表格依据 SJ/T 11364 的规定编制。

○: 表示该有害物质在该部件所有均质材料中的含量均在 GB/T 26572 规定的限量要求以下。

×: 表示该有害物质至少在该部件的某一均质材料中的含量超出 GB/T 26572 规定的限量要求。



环保使用期限标识是根据《电器电子产品有害物质限制使用管理办法》以及《电器电子产品有害物质限制使用标识要求(SJ/T11364-2024)》制定的,适用于中国境内销售的电子电气产品的标识。

电器电子产品只要按照安全及使用说明内容在正常使用情况下,从生产日期算起,在此期限内产品中含有的有毒有害物质不致发生外泄或突变,不致对环境造成严重污染或对其人身、财产造成严重损害。

产品使用后,要废弃在环保使用年限内或者刚到年限的产品,请根据国家标准采取适当的方法进行处置。

另外,此期限不同于质量/功能的保证期限。

1 Overview

1.1	Main Functions	11
1.2	Compatible Models	11
1.3	Preparing for Installation	12
1.4	How to Use the Adjustment Tool.....	12
1.5	Installing the Application Software	13

1.1 Main Functions

The ABS OR700 Application Software is designed to support mounting adjustment and post-installation maintenance of the ABS OR700 Rotary Encoder.

This application software provides the following functions.

■ Rotary encoder mounting support functions

- Rotor mounting status check
- Stator mounting position adjustment support
- Automatic electrical adjustment (calibration)

■ Maintenance functions

- Mounting status monitoring
- Signal waveform monitoring
- Error log management (check, clear, and save)


1.2 Compatible Models

This application software can be used with the ABS OR700 Rotary Encoder.

1.3 Preparing for Installation

The following equipment is required to use this application software for mounting support of the ABS OR700 Rotary Encoder. Please prepare these items in advance.

For details, see "2 Setup for Installation" in the  separate "ABS OR700 User's Manual".

Name	Quantity	Note
PC	1	Obtained by customer.
Signal conversion unit (parts set) <ul style="list-style-type: none"> • USB-485 DS15P (SYSTEM SACOM Industry Corp.) • USB cable (Type-A) • Connection cable (for servo amplifier connection, D-SUB15 connector) 	1	Optional *For details such as part numbers of parts sets, see "2 Setup for Installation" in the  separate "ABS OR700 User's Manual".

In order to use this application software, you must prepare a PC that satisfies the following conditions.

Name	Specifications
CPU	1 GHz or faster with 2 or more cores on a compatible 64-bit processor
Memory	4 GB or more
Supported operating systems	Windows 11
Free disk space required for installation	100 MB
Monitor	1024 x 768 or higher
USB port	USB 2.0 port, 1 each

1.4 How to Use the Adjustment Tool

Use the dedicated adjustment tool (optional) for mounting and adjusting the ABS OR700 Rotary Encoder.

For details, see "3 Installation onto the Machine Main Unit" in the  separate "ABS OR700 User's Manual".

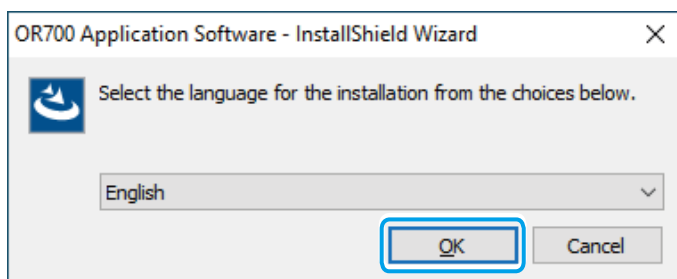
1.5 Installing the Application Software

This section explains how to install the ABS OR700 Application Software.

IMPORTANT

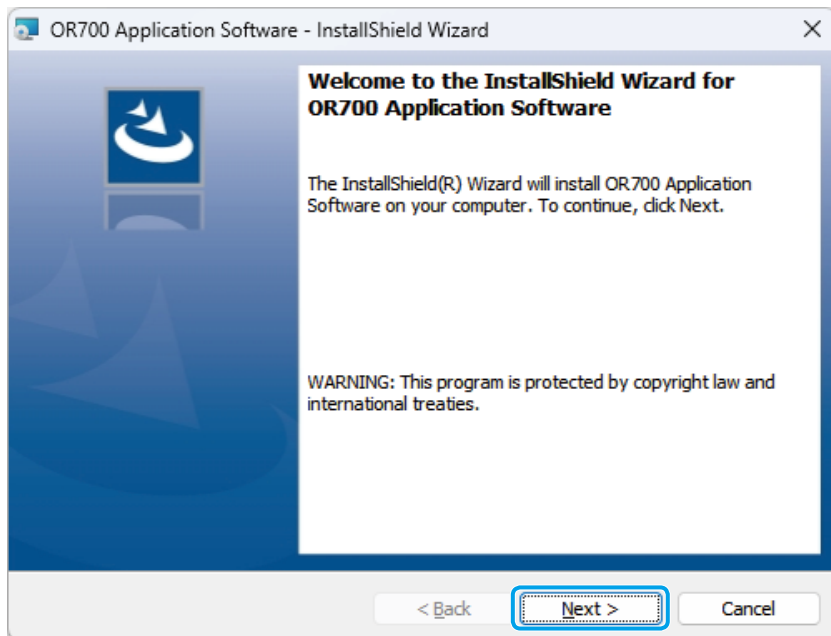
- Be sure to close all other running programs before starting the installation.
- If .NET Framework 4.6.2 or later is not enabled or installed, enable or install it before installing this application software.

- 1 Download the ABS OR700 Application Software from our website.
- 2 Run "OR700App_Setup" with administrator privileges from the folder where it was saved.
- 3 Select the installation language, and then click [OK].



» The installation preparation wizard appears.

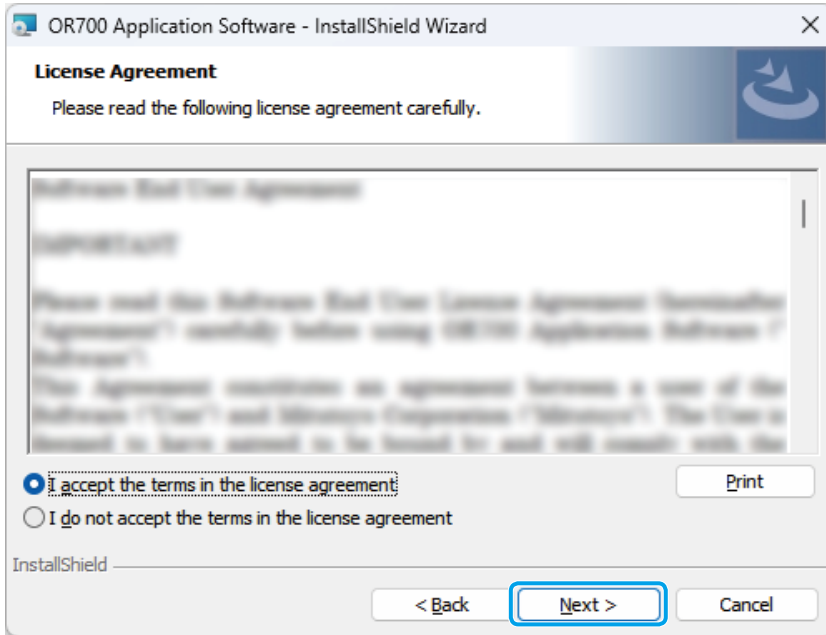
- 4 Click [Next].



» The [License Agreement] screen appears.

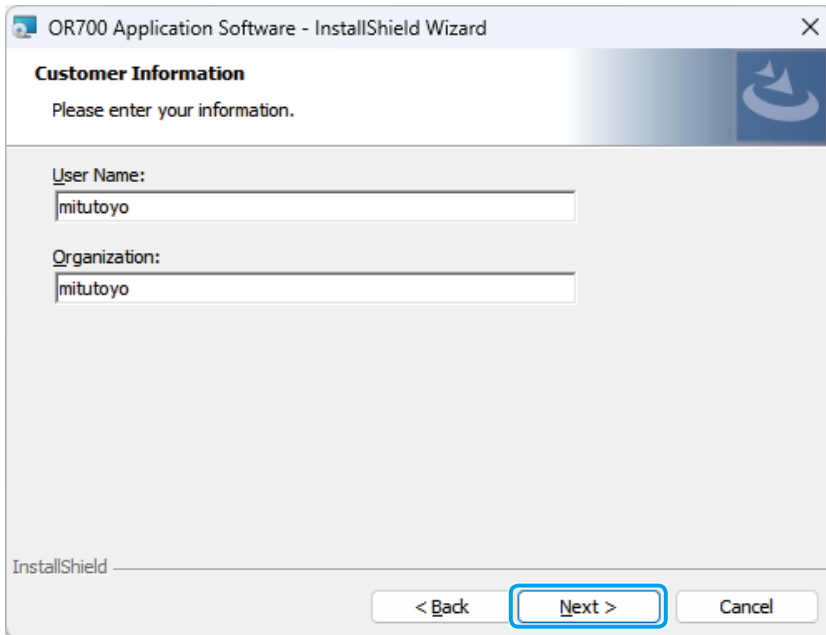
5 Read the "License Agreement". If you agree to its terms, select [I accept the terms in the license agreement], then click [Next].

If you select [I do not accept the terms in the license agreement], installation will not proceed.

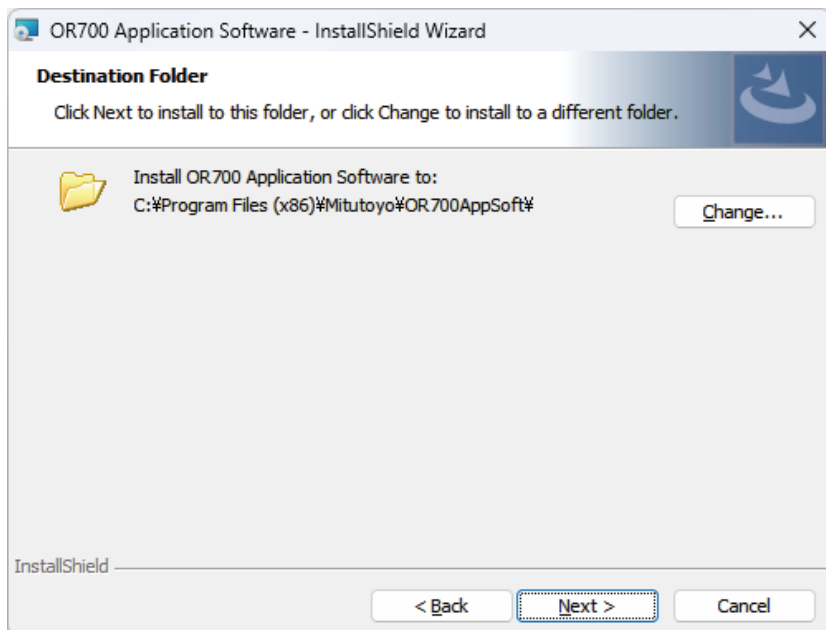


» The [Customer Information] screen appears.

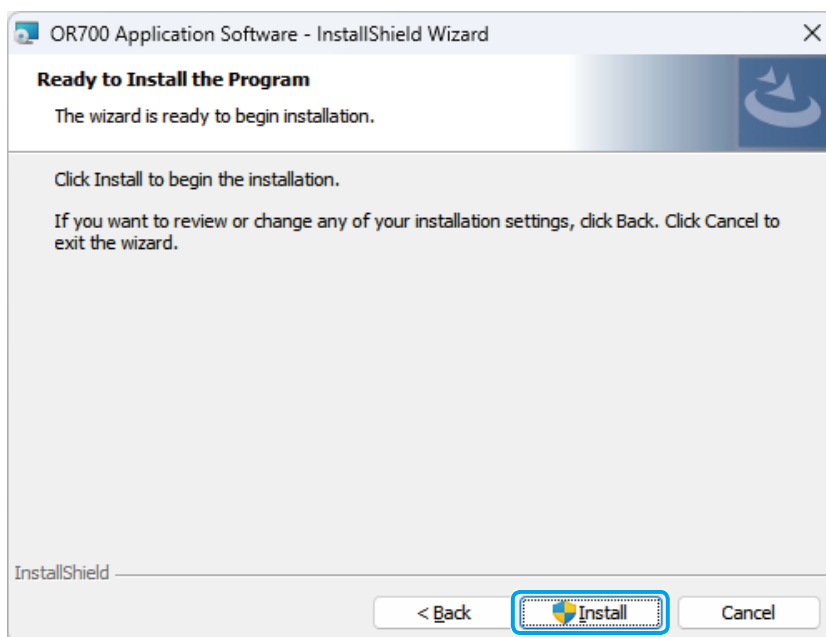
6 Enter your "User Name" and "Organization", and then click [Next].



» The [Destination Folder] screen appears.

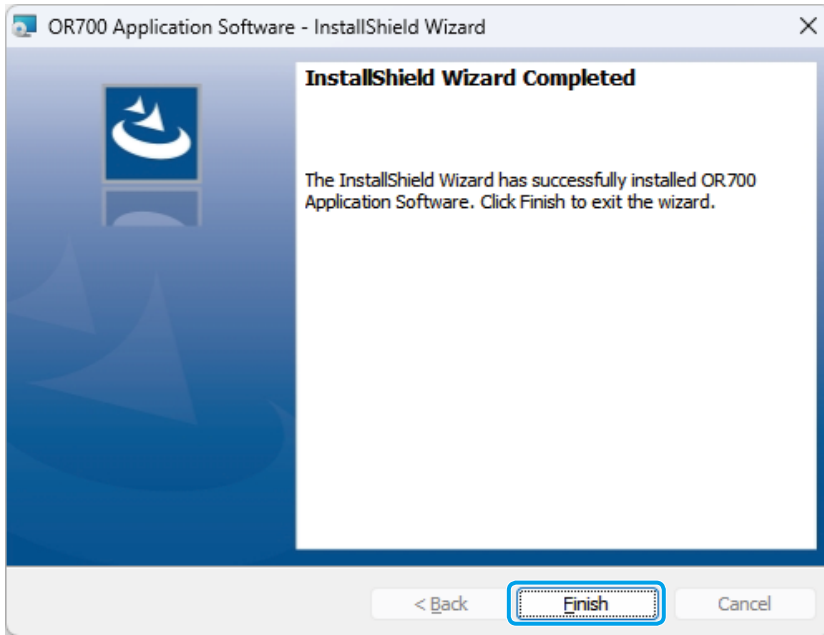
7 Specify the destination folder, and then click [Next].

» The [Ready to Install the Program] screen appears.

8 Click [Install].

» After installation is complete, the [InstallShield Wizard Completed] screen appears.

9 Click [Finish].



This completes the installation of the application software.

2 Installation Adjustment

2.1	Installation Procedure	18
2.2	Connecting to the PC	19
2.3	Starting the Application Software	20
2.4	Verifying the Rotor Mounting Status	22
2.5	Stator Position Adjustment and Securing	25
2.6	Final Check and Calibration.....	30
2.7	Exiting the Application Software	32
2.8	Setting the Display Language and Data Storage Location	33
2.9	Viewing the Manual	34
2.10	Viewing the Software Version	35

2.1 Installation Procedure

When performing installation work, also see the separate "ABS OR700 User's Manual".
Be sure to install the application software on your PC in advance.
For details, see "1.5 Installing the Application Software" on page 13.
The installation workflow is shown below.

Verify installation surface dimensions.

See "3 Installation onto the Machine Main Unit" in the separate "ABS OR700 User's Manual".

Temporarily fix the stator and rotor.

See "3 Installation onto the Machine Main Unit" in the separate "ABS OR700 User's Manual".

Scope of this manual

Connect to the PC.

"2.2 Connecting to the PC" on page 19

Start the application software.

"2.3 Starting the Application Software" on page 20

Verify the rotor mounting status.

"2.4 Verifying the Rotor Mounting Status" on page 22

Adjust the stator position.

"2.5 Stator Position Adjustment and Securing" on page 25

Secure the stator.

"2.5 Stator Position Adjustment and Securing" on page 25

Perform final confirmation.

"2.6 Final Check and Calibration" on page 30

Installation complete.

IMPORTANT

Before using the application software, be sure to install the ABS OR700 Rotary Encoder on the machine within the specified dimensional tolerances.

2.2 Connecting to the PC

Connect the ABS OR700 Rotary Encoder to the PC where the application software is installed.

NOTICE

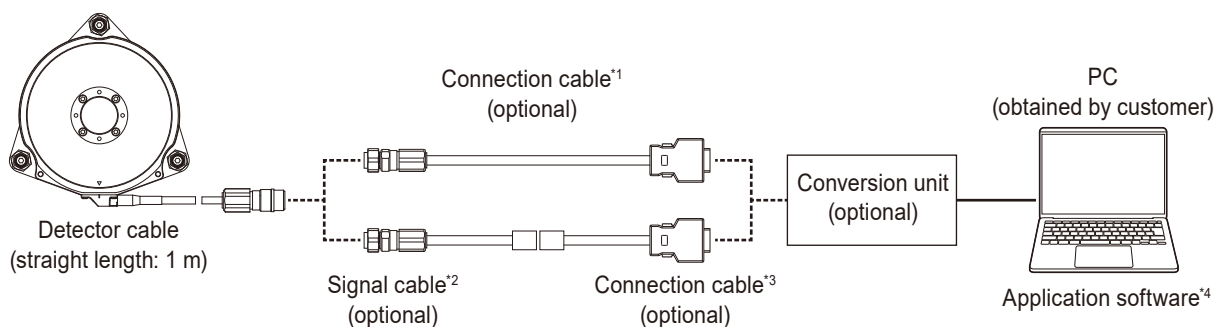
Do not turn off the power or disconnect the communication cable during communication (such as calibration or data collection).

Doing so may corrupt data stored in the stator and cause equipment failure.

IMPORTANT

Before connecting to the PC, be sure that the stator and rotor have been mounted on the machine main unit and temporarily secured.

For details, see "3 Installation onto the Machine Main Unit" in the  separate "ABS OR700 User's Manual".



*1: Circular waterproof connector — D-SUB15

*2: Circular waterproof connector — Servo amplifier connection connector

*3: Servo amplifier connection connector — D-SUB15

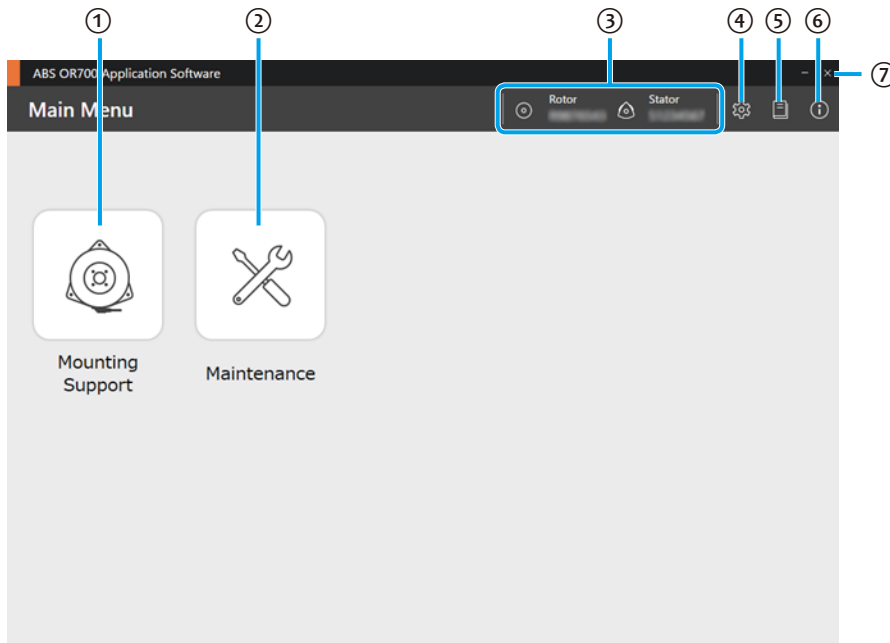
*4: For installation instructions, see  "1.5 Installing the Application Software" on page 13.

2.3 Starting the Application Software

Start the installed application software. When the application software starts, the [Main Menu] screen appears.

1 Start the application software.

» The [Main Menu] screen appears.



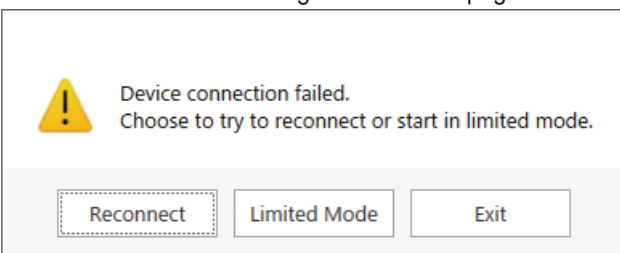
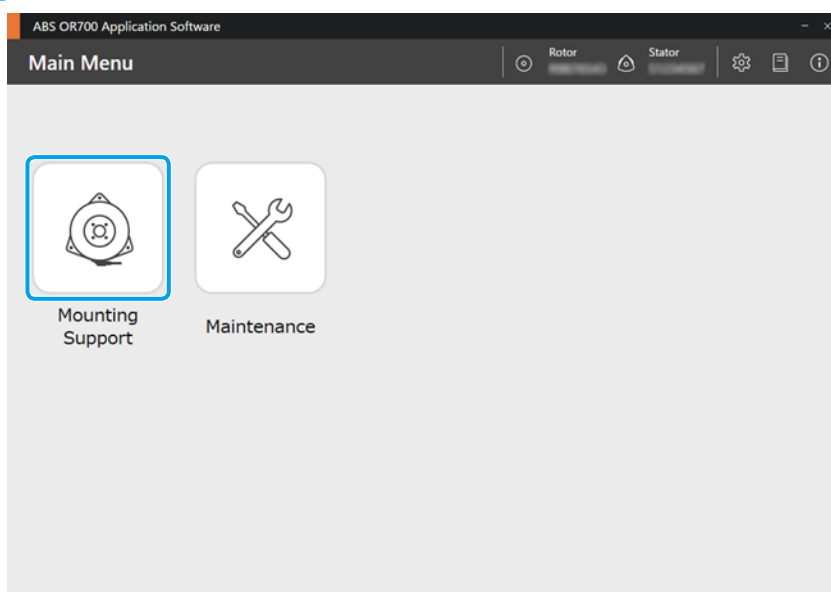
No.	Name	Description
①	Mounting Support	Used during mounting of the ABS OR700 Rotary Encoder. Provides rotor mounting status verification, stator mounting support, and calibration.
②	Maintenance	Used for maintaining the ABS OR700 Rotary Encoder mounted on the equipment. Provides calibration, mounting status verification, signal strength check, error log display, and angle information display. ■ "3.2 Calibration" on page 39 ■ "3.3 Check the Mounting Status" on page 43 ■ "3.4 Check Signal Strength" on page 48 ■ "3.5 Check and Clear the Error Log" on page 51 ■ "3.6 Display Angle Information" on page 53
③	Serial No.	Displays the serial number of the connected ABS OR700 Rotary Encoder.
④	Preferences	Sets the display language and data storage location. ■ "2.8 Setting the Display Language and Data Storage Location" on page 33
⑤	Help	Displays the manual. ■ "2.9 Viewing the Manual" on page 34
⑥	Version Information	Displays version information of the application software. ■ "2.10 Viewing the Software Version" on page 35
⑦	Exit	Exits the application software. ■ "2.7 Exiting the Application Software" on page 32

Tips


If the [Main Menu] screen does not appear when starting the application software and the following message is displayed, communication with the PC may not be possible for reasons such as the signal converter unit being turned off, connection issues, or stator failure.

Recheck the signal converter unit power supply, cable connections, and USB port settings.

Refer to  "2.2 Connecting to the PC" on page 19 and confirm that the connection is correct.

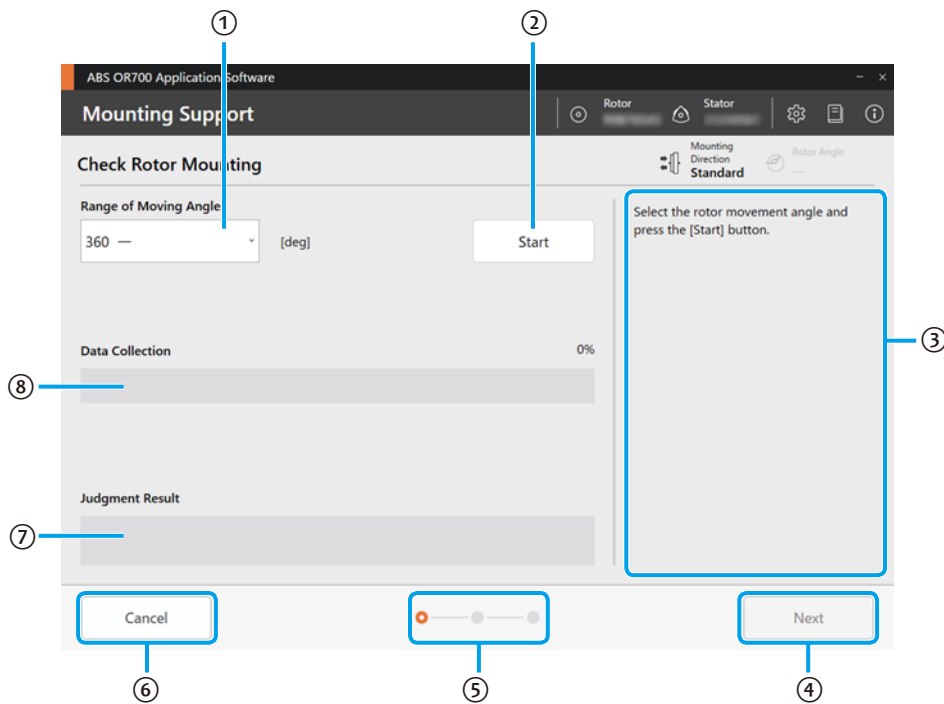
**2** Click [Mounting Support].

» The [Check Rotor Mounting] screen appears.

Next, proceed to  "2.4 Verifying the Rotor Mounting Status" on page 22 and verify the rotor mounting status (eccentricity and tilt).

2.4 Verifying the Rotor Mounting Status

On the [Check Rotor Mounting] screen, verify the rotor mounting status (eccentricity and tilt).



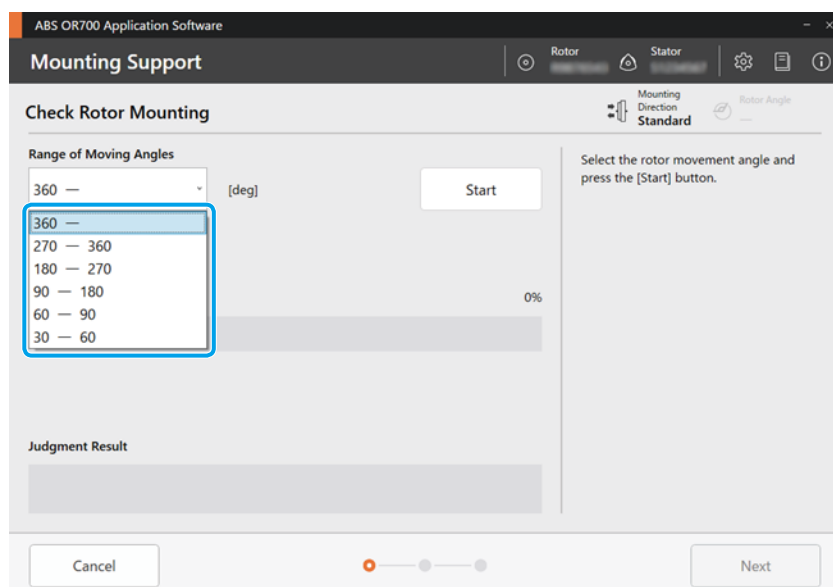
No.	Name	Description
①	Range of Moving Angles	<p>Select the angle of movement of the rotor (rotating shaft).</p> <ul style="list-style-type: none"> • 30–60 • 60–90 • 90–180 • 180–270 • 270–360 • 360– <div style="border: 1px solid black; padding: 5px;"> <p>IMPORTANT</p> <ul style="list-style-type: none"> • Be sure to select the actual angular range within which the equipment with the ABS OR700 Rotary Encoder mounted will operate. • In [Range of Moving Angles], "nn–mm" means nn deg or greater, but less than mm deg. Be sure to rotate the rotor (rotating shaft) at least nn deg. • Calibration is performed within the range selected here (nn deg or greater, but less than mm deg), and the system is electrically optimized. If the equipment is used beyond the selected range, it may not be set to the optimized state. </div>
②	Start button	<p>Starts data collection.</p> <p>After clicking the button, slowly rotate the rotor (rotating shaft) at less than 60 min⁻¹.</p> <p>During data collection, the [Start] button label changes to [Stop].</p>
③	Work guidance area	<p>Displays procedures required for operation. Proceed according to the displayed instructions.</p>
④	Next/Complete button	<p>Click to proceed to the next step when it becomes available.</p> <p>The [Complete] button is displayed only when the final check and calibration are complete.</p>

No.	Name	Description
⑤	Current work process	Indicates the current step out of a total of three steps. When all three steps are complete, [Mounting Support] ends.
⑥	Cancel button	Cancels [Mounting Support] and returns to the [Main Menu] screen.
⑦	Judgment Result	Displays the judgment result of the rotor mounting status. <ul style="list-style-type: none"> • Pass: Rotor mounting is within the specified range. • Fail: Rotor mounting is out of the specified range. Check the mounting status.
⑧	Data Collection	Displays the progress of data collection as a percentage. Continue data collection until it reaches 100 %.

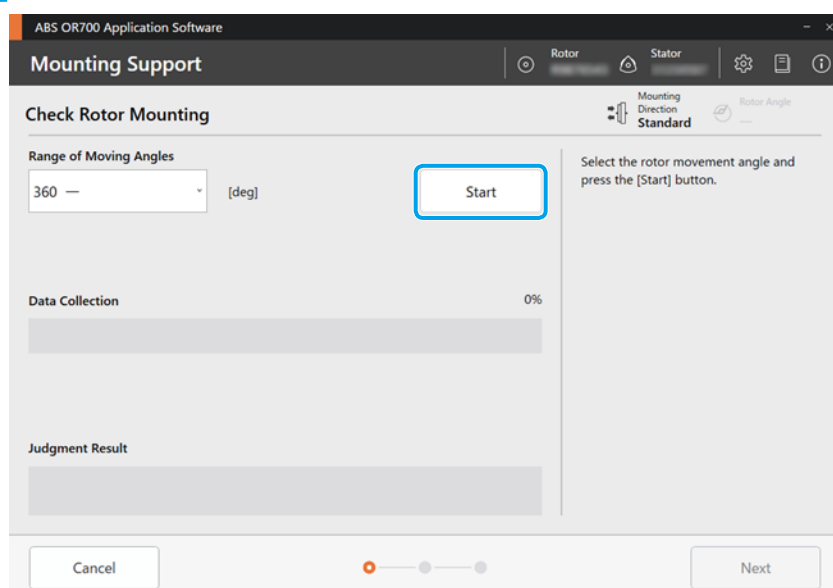
1 In [Range of Moving Angles], select the rotor (rotating shaft) movement angle.

IMPORTANT

During mounting and adjustment work, the rotor (rotating shaft) must be rotated at least 30 degrees.



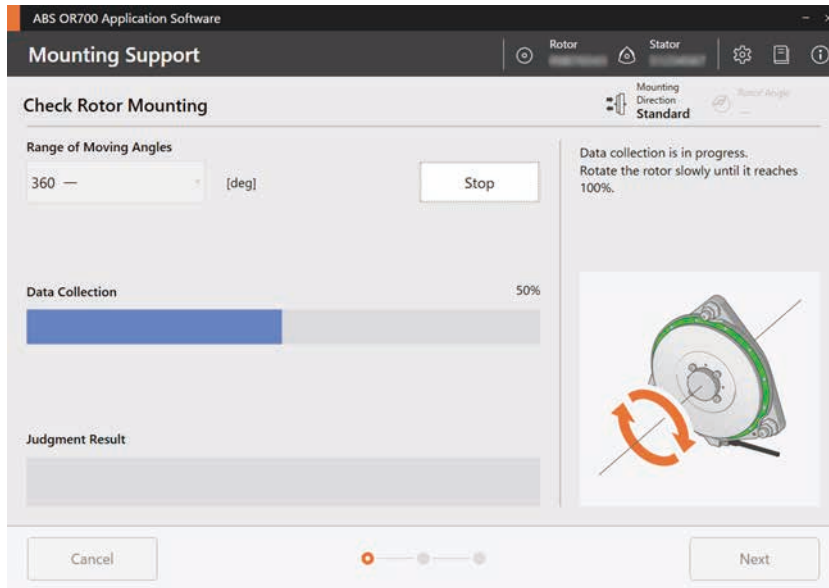
2 Click the [Start] button.



3 Rotate the rotor (rotating shaft) until the collection progress reaches 100 %.

Rotation can be either clockwise or counterclockwise.

Continue rotating to the maximum angle within the movement range until data collection is complete. If [360-] is selected, continuous rotation is acceptable.



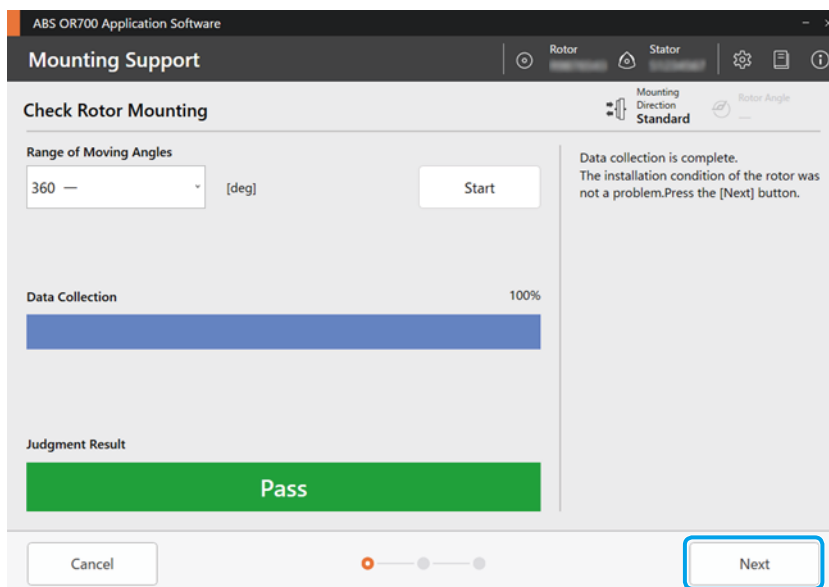
Tips

During data collection, the [Start] button label changes to [Stop]. To stop, click the [Stop] button. This stops data collection. To resume, click the [Start] button again.

» If data collection succeeds and the rotor mounting is within the specified range, [Pass] appears in the judgment result.

If the judgment result shows [Fail], see the separate "ABS OR700 User's Manual" to check the rotor mounting status.

4 Click [Next].

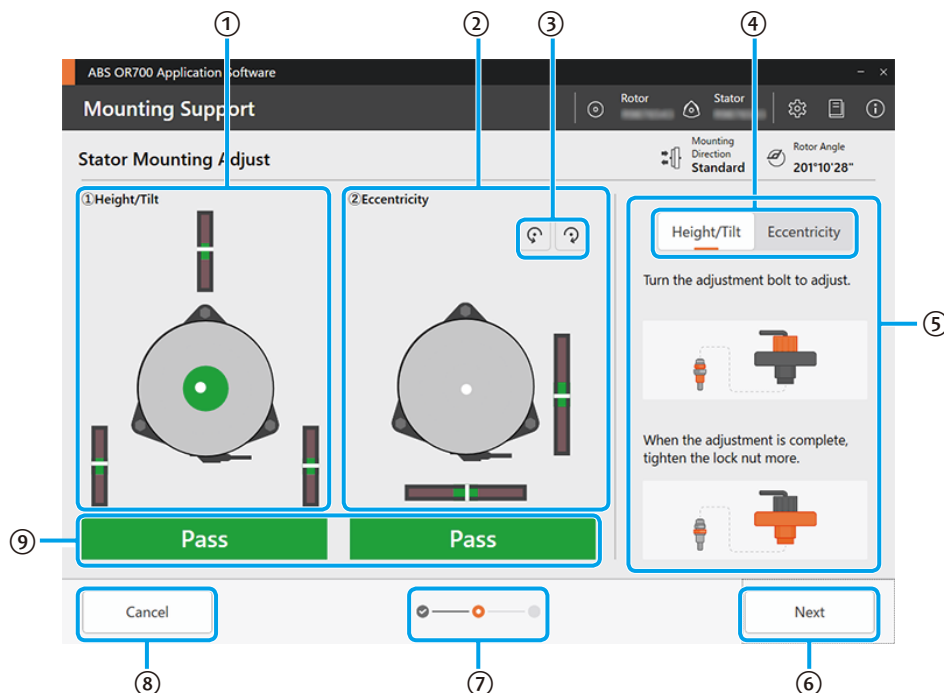


» The [Stator Mounting Adjust] screen appears.



Next, proceed to "2.5 Stator Position Adjustment and Securing" on page 25 to adjust and secure the stator position.

2.5 Stator Position Adjustment and Securing

While checking the stator mounting position, adjust height/tilt/eccentricity to within the specified range and then secure it in place.



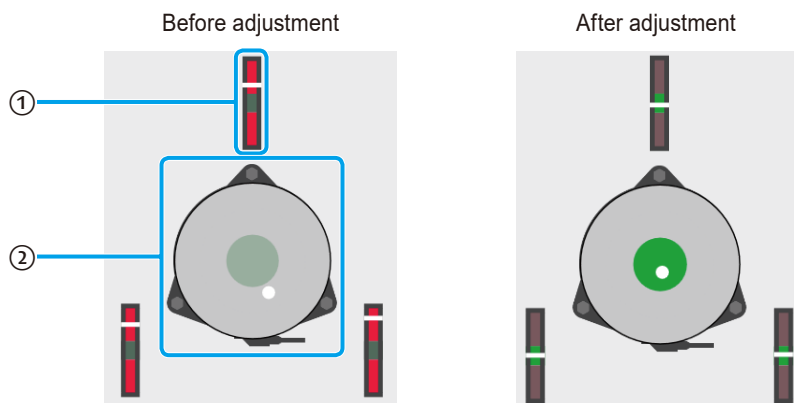
Tips

- Click the   (Rotate Display) button to match the stator orientation on screen with the actual orientation, making the task easier.
- To cancel, click the [Cancel] button. This cancels the task and returns to the [Main Menu] screen.

No.	Name	Description
①	Height/Tilt	Displays the stator's height and tilt condition. The display changes when the adjustment mechanism's adjustment bolts are turned.
②	Eccentricity	Displays the direction and magnitude of stator eccentricity. The display changes when the stator is moved.
③	Rotate display button	Changes the angle of the height, tilt, and eccentricity indicators. Matching the view to the actual orientation aligns the indicator with the adjustments, making them easier to understand. Each click rotates the stator shown on screen 30 degrees clockwise or counterclockwise.
④	Guidance toggle buttons	Switches the displayed guidance between height/tilt adjustment and eccentricity adjustment.
⑤	Work guidance area	Displays procedures required for operation. Proceed according to the displayed instructions.
⑥	Next/Complete button	Click to proceed to the next step when it becomes available. The [Complete] button is displayed only when the final check and calibration are complete.
⑦	Current work process	Indicates the current step out of a total of three steps. When all three steps are complete, [Mounting Support] ends.
⑧	Cancel button	Cancels [Mounting Support] and returns to the [Main Menu] screen.

No.	Name	Description
⑨	Judgment Result	Displays the judgment result for height/tilt and eccentricity. <ul style="list-style-type: none"> • Pass: Within the specified range. • Fail: Out of the specified range.

2.5.1 Height/Tilt Adjustment



No.	Name	Description
①	Height indicator	Shows the height of the three adjustment bolts using the positions of the white bars. <ul style="list-style-type: none"> • Green: Within the specified range. • Red: Out of the specified range.
②	Tilt indicator	Shows the apex of the stator tilt using the position of the white dot.

1 Adjust the height of the adjustment bolts.

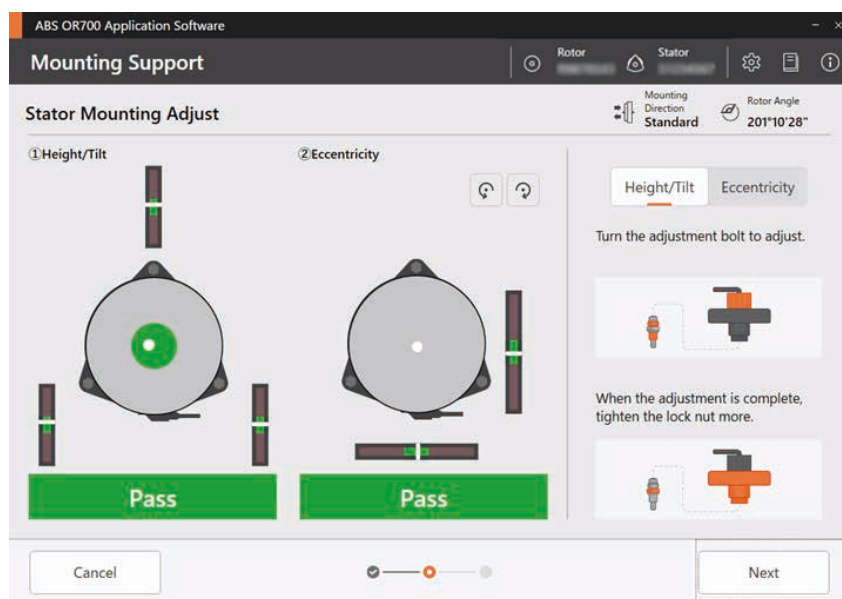
Position the adjustment tool on the three stator adjustment bolts and turn the lock sockets to adjust bolt height. Adjust to bring all indicator bars near the center of the green area.

2 Adjust the stator tilt.

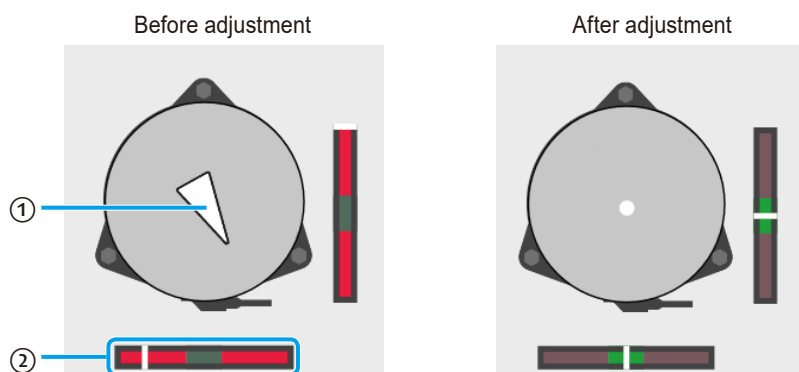
Use the adjustment tool to finely adjust the bolts so the tilt indicator dot approaches the center of the green area.

When the heights of the three bolts and the stator tilt are within the specified range, the judgment result changes from [Fail] to [Pass].

When the height/tilt judgment result shows [Pass], lightly tighten the lock nuts.



2.5.2 Eccentricity Adjustment



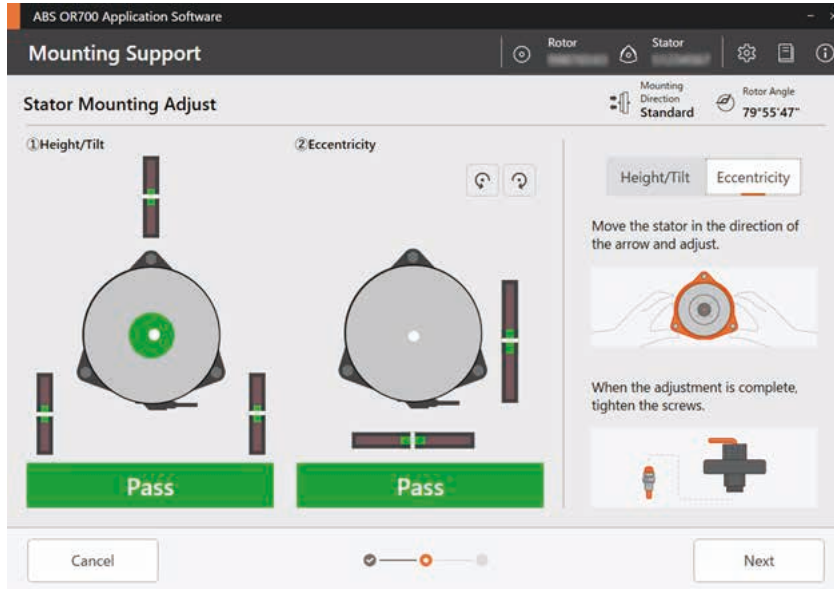
No.	Name	Description
①	Arrow	Indicates the direction of eccentricity. When eccentricity is within the specified range, the arrow changes to a white dot.
②	Eccentricity indicator	Shows the amount of stator eccentricity as a white bar. <ul style="list-style-type: none"> • Green: Within the specified range. • Red: Out of the specified range.

If an arrow is displayed, move the stator in the indicated direction.


Adjust so the two eccentricity indicator bars approach the center of the green area.

If the stator cannot be moved, place an adjustment tool on the stator adjustment mechanism and loosen the M4 hex socket bolts with a hex wrench.

When eccentricity is within the specified range, the arrow changes to a white dot, and the judgment result changes from [Fail] to [Pass].



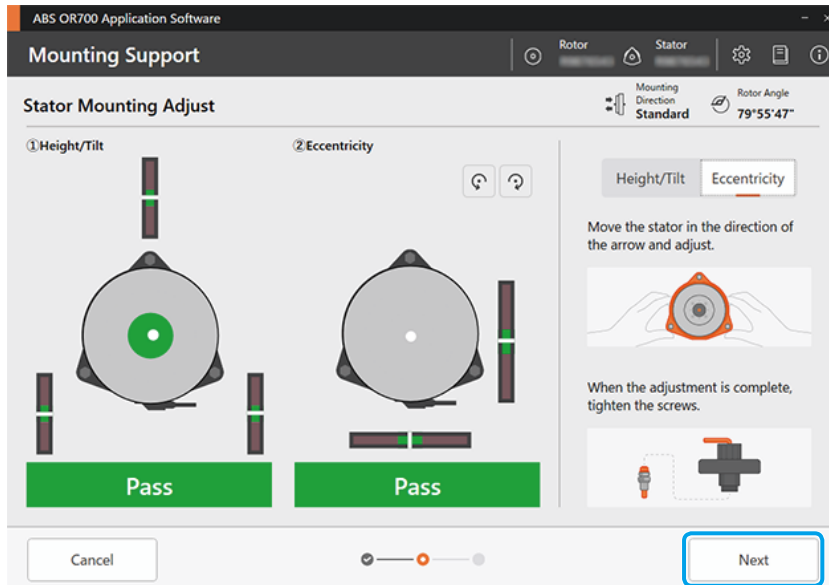
2.5.3 Stator Securing

When both height/tilt and eccentricity judgment results show [Pass], secure the stator in place. Secure the adjustment mechanism lock nuts and the M4 hex socket bolts to the specified torque. For details, see "3 Installation onto the Machine Main Unit" in the  separate "ABS OR700 User's Manual".

Tips

- Tightening the stator may cause the judgment result to change to [Fail]. If this occurs, readjust and secure it again.
- To reduce misalignment during tightening, tighten the three lock nuts and the three M4 hex socket bolts little by little in sequence.
- Check that [Fail] does not appear at any point when rotating within the movement angle range.

- 1 After tightening all lock nuts and M4 hex socket bolts, confirm that both results show [Pass], and then click [Next].

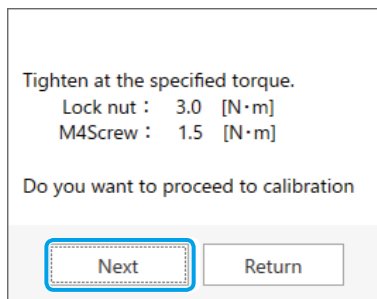


» A stator securing message appears.

- 2 Click [Next].

IMPORTANT

- To ensure secure stator fastening, always tighten to the specified torque. Proceeding with insufficient fastening may result in reduced performance or safety.
- Before rotating the rotor (rotating shaft), always remove objects such as adjustment tools.

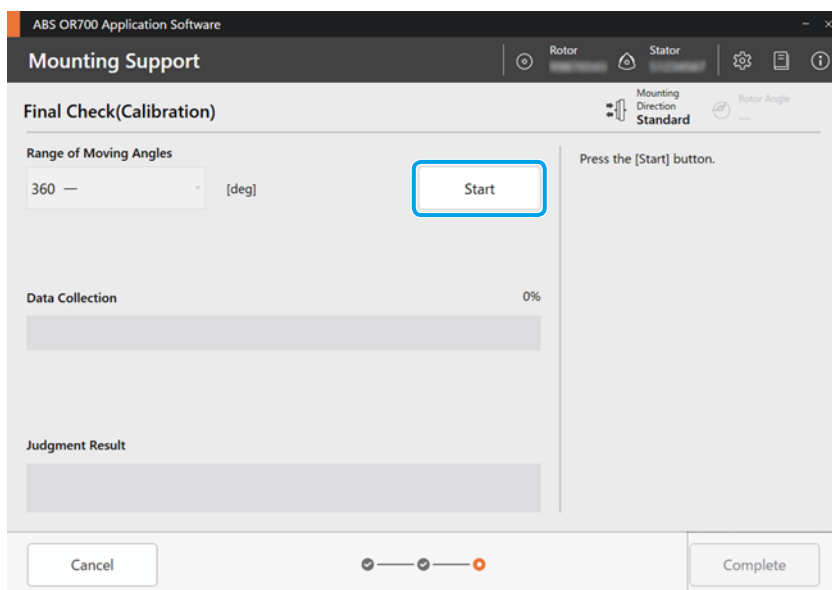


» The [Final Check(Calibration)] screen appears.

2.6 Final Check and Calibration

The application software performs a final check of the mounting status and collects calibration data.

1 Click the [Start] button.



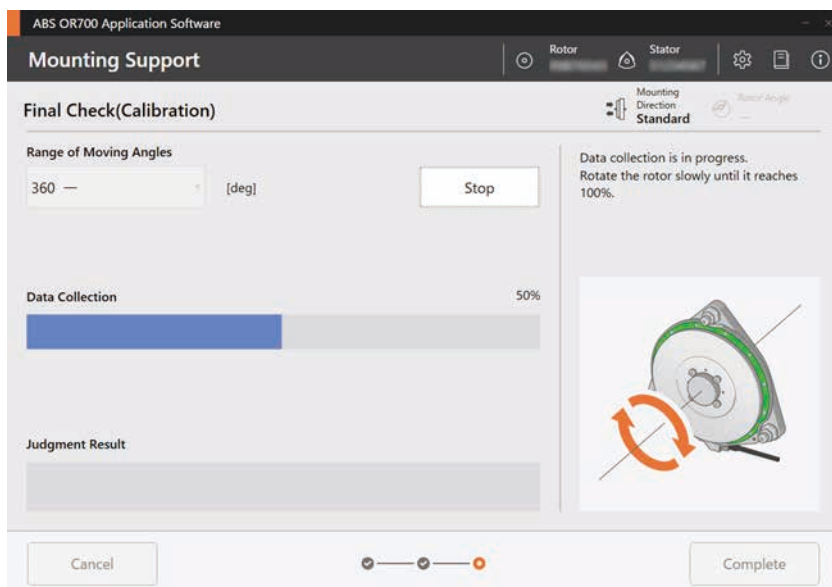
IMPORTANT

- Be sure to select the actual angular range within which the equipment with the ABS OR700 Rotary Encoder mounted will operate.
- In [Range of Moving Angles], "nn–mm" means nn deg or greater, but less than mm deg. Be sure to rotate the rotor (rotating shaft) at least nn deg.
- Calibration is performed within the range selected here (nn deg or greater, but less than mm deg), and the system is electrically optimized. If the equipment is used beyond the selected range, it may not be set to the optimized state.
- Performing calibration automatically clears the error log. If you need to preserve the error log, save it before starting calibration.

Tips

For details on the screen buttons, see [📖 "2.4 Verifying the Rotor Mounting Status" on page 22.](#)

2 Rotate the rotor (rotating shaft) until the collection progress reaches 100 %.



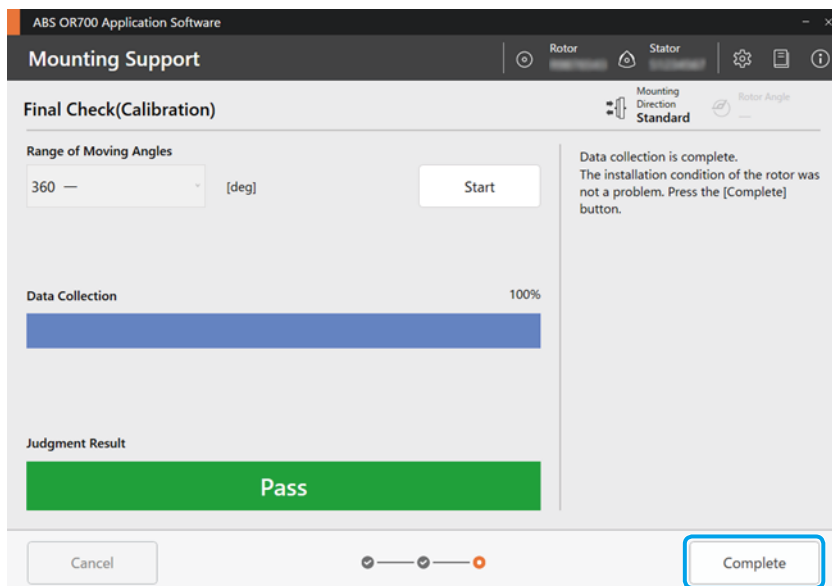
Tips

- During data collection, the [Start] button label changes to [Stop]. To stop, click the [Stop] button. This stops data collection. To resume, click the [Start] button again.
- When data collection reaches 50 %, it temporarily pauses for 2–3 seconds while calculations are performed. Data collection automatically resumes after calculations are completed.

3 When data collection is complete, click [Complete].

If all rotor and stator mounting adjustments are within the specified range and calibration (electrical optimization) is successful, [Pass] appears.

Mounting adjustment of the ABS OR700 Rotary Encoder is complete; you can now connect it to the controller and begin use.

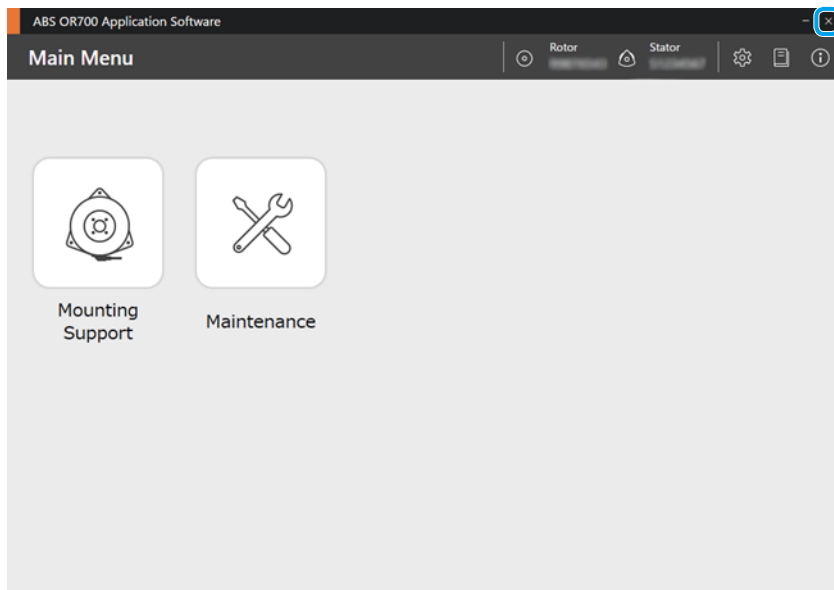


» The [Main Menu] screen appears.

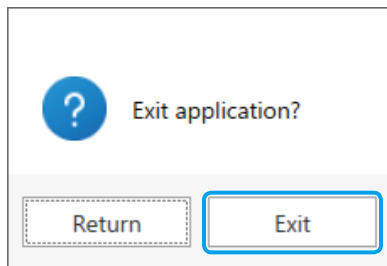
If [Fail] appears, the mounting may be out of specification. Follow the error messages in the dialog and guidance area to do mounting adjustment again.

2.7 Exiting the Application Software

- 1 Click the × button at the [Main Menu] screen's top right.



- 2 When the exit message appears, click [Exit] to close the application software.

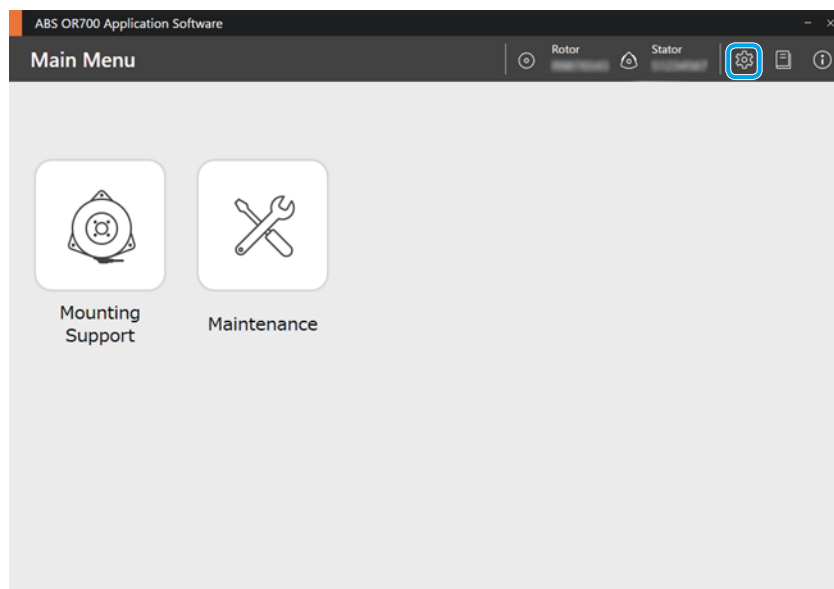


- 3 Disconnect the ABS OR700 Rotary Encoder from the PC.

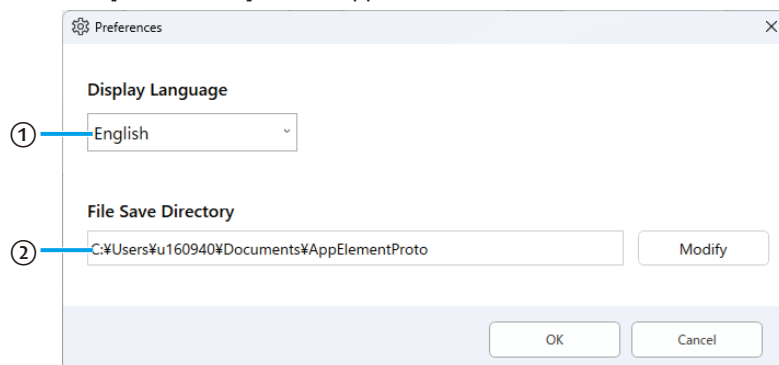
2.8 Setting the Display Language and Data Storage Location

Set the display language and data storage location.

- 1 Click the  (Preferences) button at the [Main Menu] screen's top right.



» The [Preferences] screen appears.

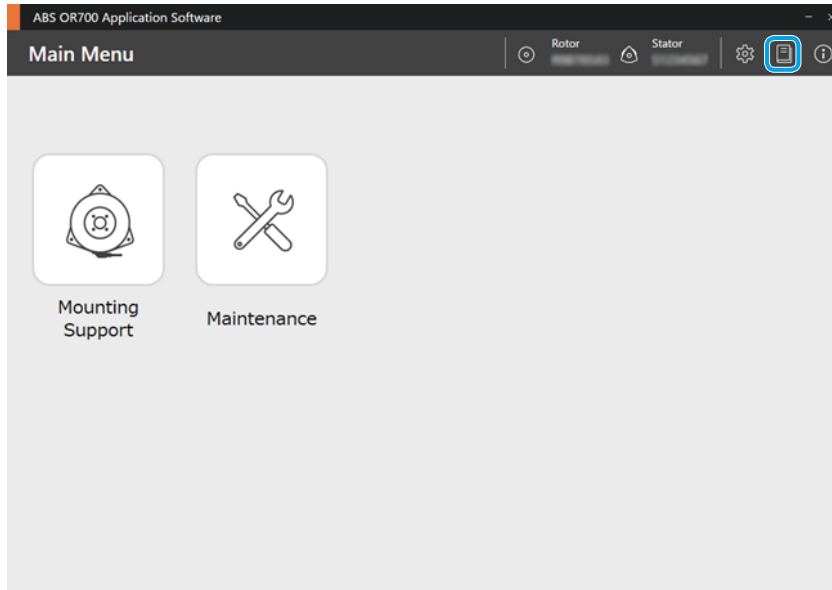


No.	Name	Description
①	Display Language	Changes the language of titles, buttons, and other labels. You can select Japanese or English. Click [OK] to display in the selected language.
②	File Save Directory	Set the data storage directory.

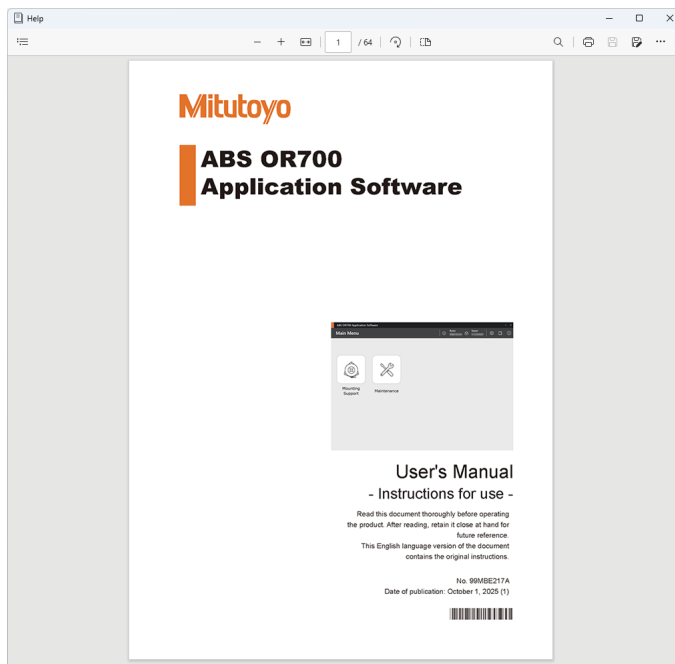
2.9 Viewing the Manual

You can view the application software manual.

- 1 Click the  (Help) button at the [Main Menu] screen's top right.



» The [Help] screen appears.



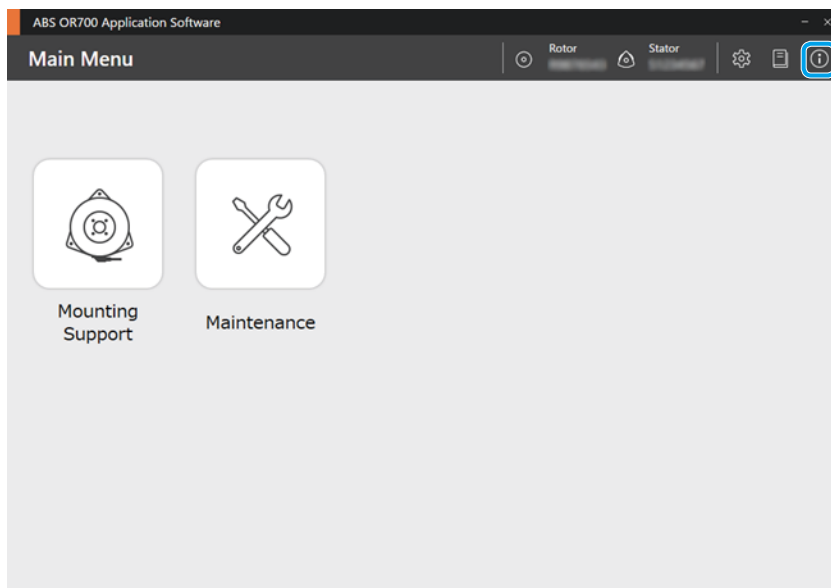
The PDF manual stored with the application software is displayed.

The manual is displayed in the language selected in [Display Language] on the [Preferences] screen.

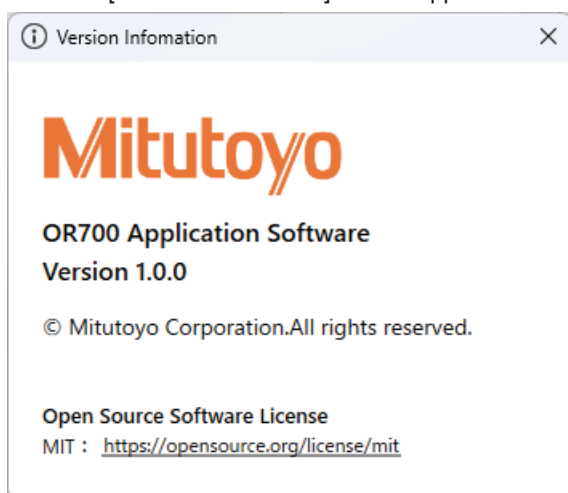
2.10 Viewing the Software Version

You can view the application software version information.

- 1 Click the  (Version Information) button at the [Main Menu] screen's top right.



» The [Version Information] screen appears.



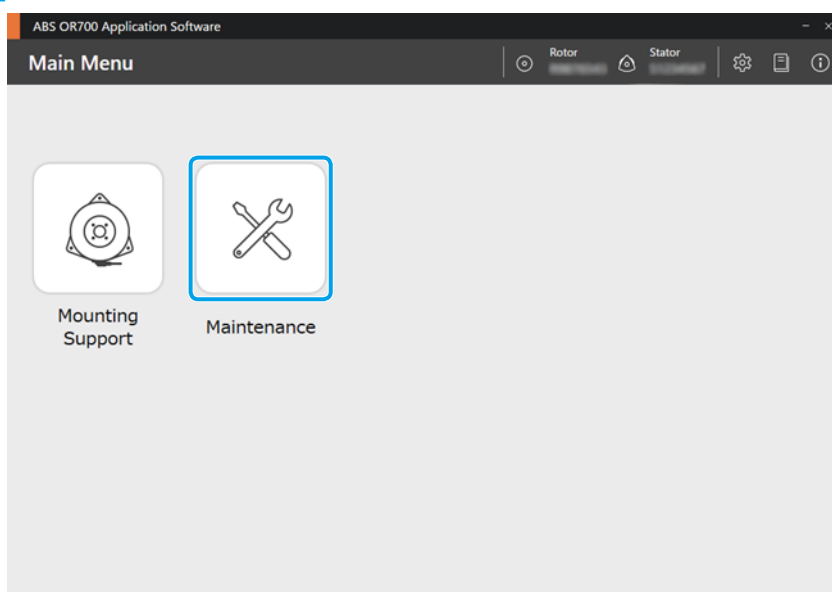
MEMO

3 Maintenance

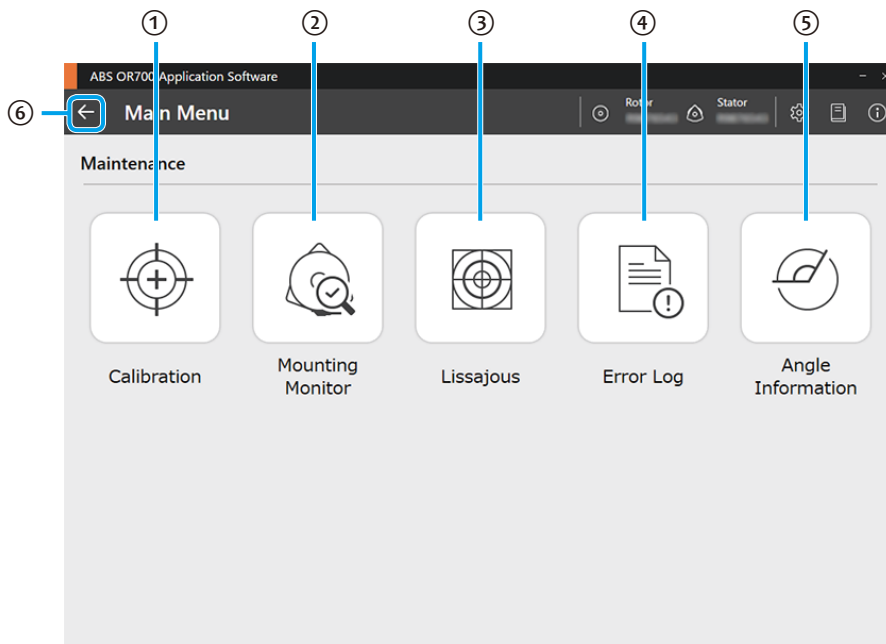
3.1	Maintenance Functions	37
3.2	Calibration	39
3.3	Check the Mounting Status	43
3.4	Check Signal Strength	48
3.5	Check and Clear the Error Log	51
3.6	Display Angle Information	53

3.1 Maintenance Functions

- 1 Click [Maintenance] on the [Main Menu] screen.



- » The [Maintenance] screen appears.



No.	Name	Description
①	Calibration	Performs calibration (electrical adjustment). 📖 "3.2 Calibration" on page 39
②	Mounting Monitor	Check the current mounting status during maintenance. 📖 "3.3 Check the Mounting Status" on page 43
③	Lissajous	You can check and save the signal strength as a Lissajous waveform. 📖 "3.4 Check Signal Strength" on page 48
④	Error Log	View, clear, or save to file the error log stored in the rotary encoder. 📖 "3.5 Check and Clear the Error Log" on page 51
⑤	Angle Information	Displays the current rotor angle. 📖 "3.6 Display Angle Information" on page 53
⑥	Return button	Returns to the [Main Menu] screen.

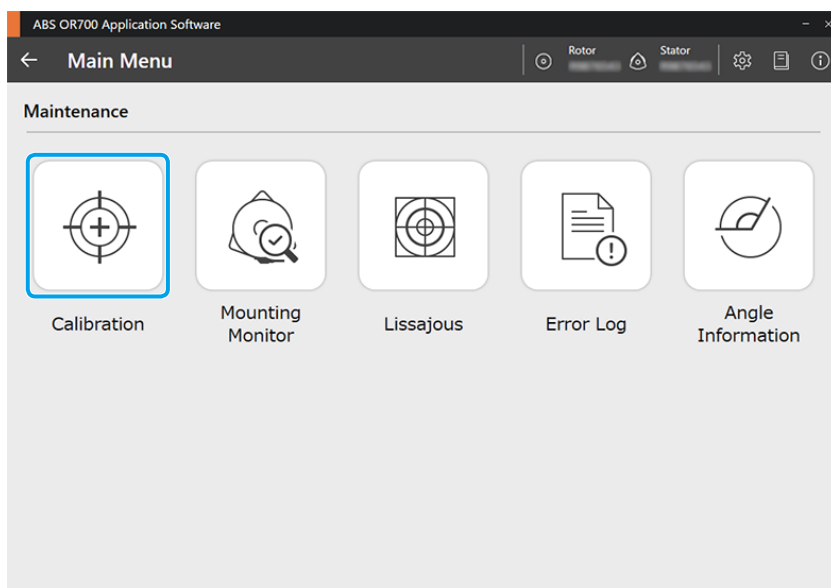
3.2 Calibration

Performs calibration (electrical adjustment).

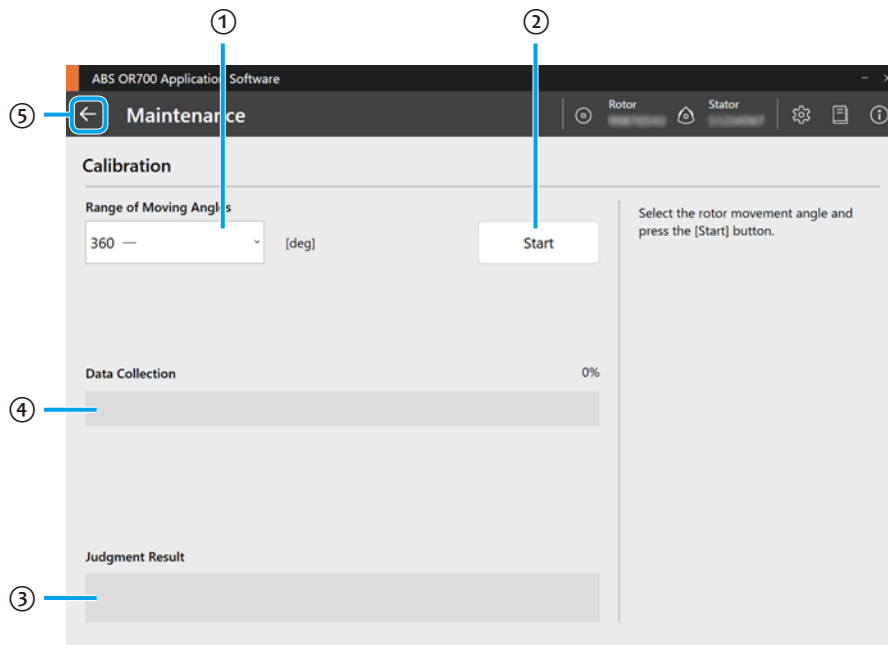
IMPORTANT

- Performing calibration automatically clears the error log. If you need to preserve the error log, save it before starting calibration.
- Make sure the stator and rotor are properly mounted before performing calibration. If calibration is performed with improper mounting, the specifications may not be met.
- After all [Mounting Support] steps have been completed, calibration is performed automatically, so there is no need to recalibrate.

1 Click [Calibration] on the [Maintenance] screen.

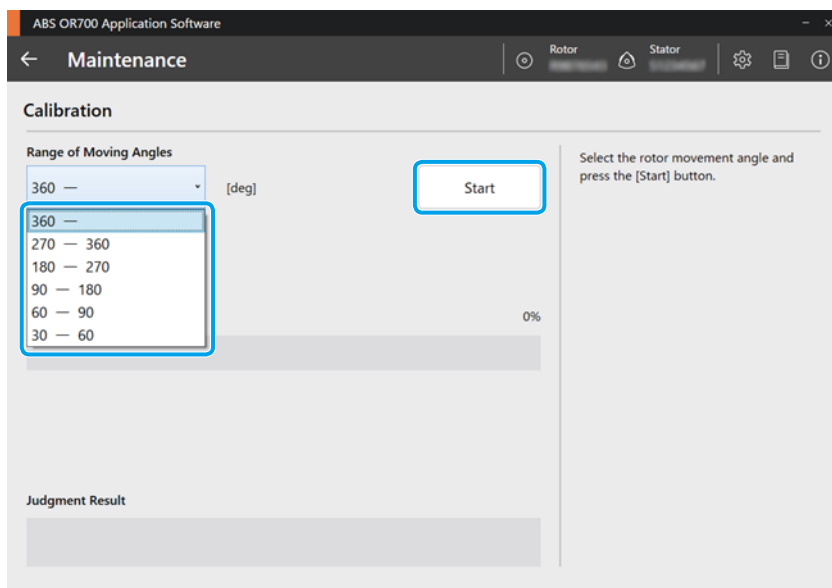


» The [Calibration] screen appears.

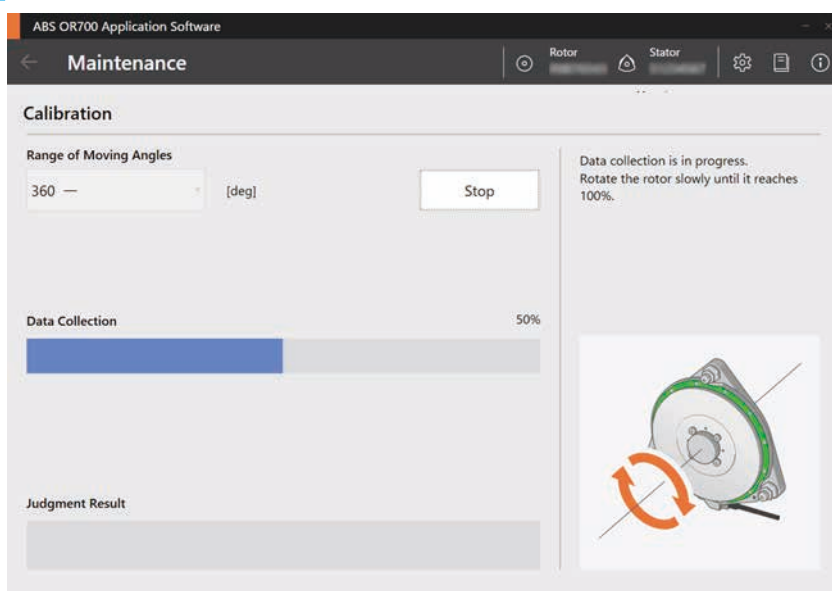


No.	Name	Description
①	Range of Moving Angles	<p>Select the angle of movement of the rotor (rotating shaft).</p> <ul style="list-style-type: none"> • 30–60 • 60–90 • 90–180 • 180–270 • 270–360 • 360– <div style="border: 1px solid black; padding: 5px; margin-top: 10px;"> <p>IMPORTANT</p> <ul style="list-style-type: none"> • Be sure to select the actual angular range within which the equipment with the ABS OR700 Rotary Encoder mounted will operate. • In [Range of Moving Angles], "nn–mm" means nn deg or greater, but less than mm deg. Be sure to rotate the rotor (rotating shaft) at least nn deg. • Calibration is performed within the range selected here (nn deg or greater, but less than mm deg), and the system is electrically optimized. If the equipment is used beyond the selected range, it may not be set to the optimized state. </div>
②	Start button	<p>Starts data collection.</p> <p>After clicking the button, slowly rotate the rotor (rotating shaft) at less than 60 rpm.</p> <p>During data collection, the [Start] button label changes to [Stop].</p>
③	Judgment Result	<p>Displays the calibration judgment result.</p> <ul style="list-style-type: none"> • Pass: Calibration completed successfully. • Fail: Calibration failed. Check the mounting status.
④	Data Collection	<p>Displays the progress of data collection as a percentage.</p> <p>Continue data collection until it reaches 100 %.</p>
⑤	Return button	<p>Returns to the [Maintenance] screen.</p>

- 2 In [Range of Moving Angles], select the rotor (rotating shaft) movement angle and click the [Start] button.



- 3 Rotate the rotor (rotating shaft) until the collection progress reaches 100 %.

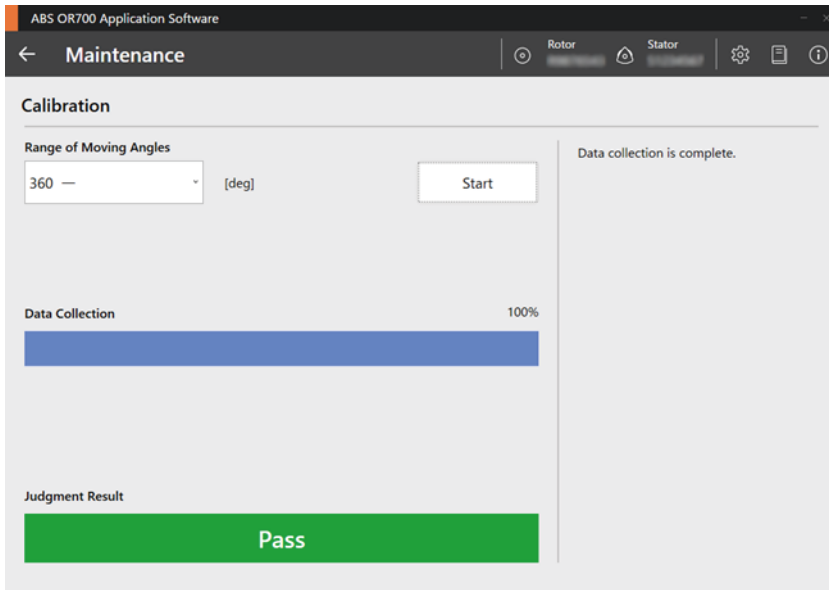


» After data collection, the judgment result is displayed.

Tips

When data collection reaches 50 %, it temporarily pauses for 2–3 seconds while calculations are performed. Data collection automatically resumes after calculations are completed.

If the judgment result is [Pass], the calibration result is written to the rotary encoder.

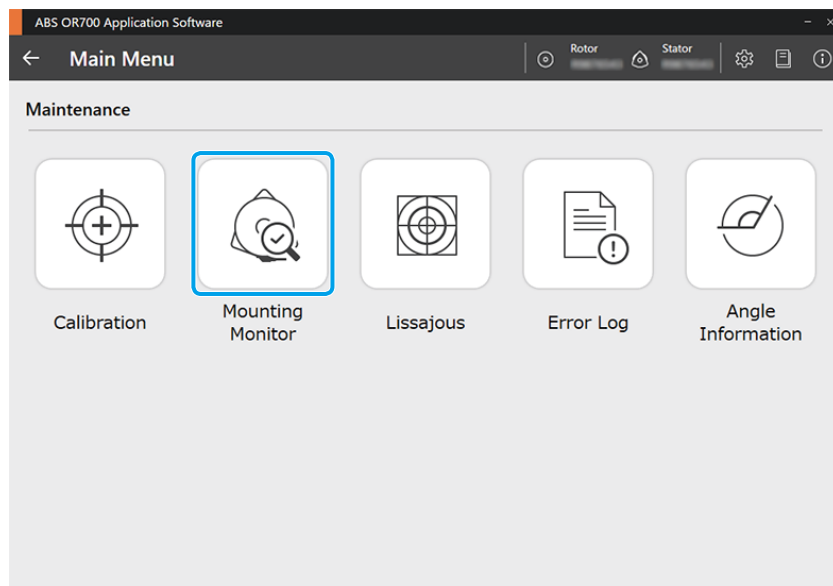


3.3 Check the Mounting Status

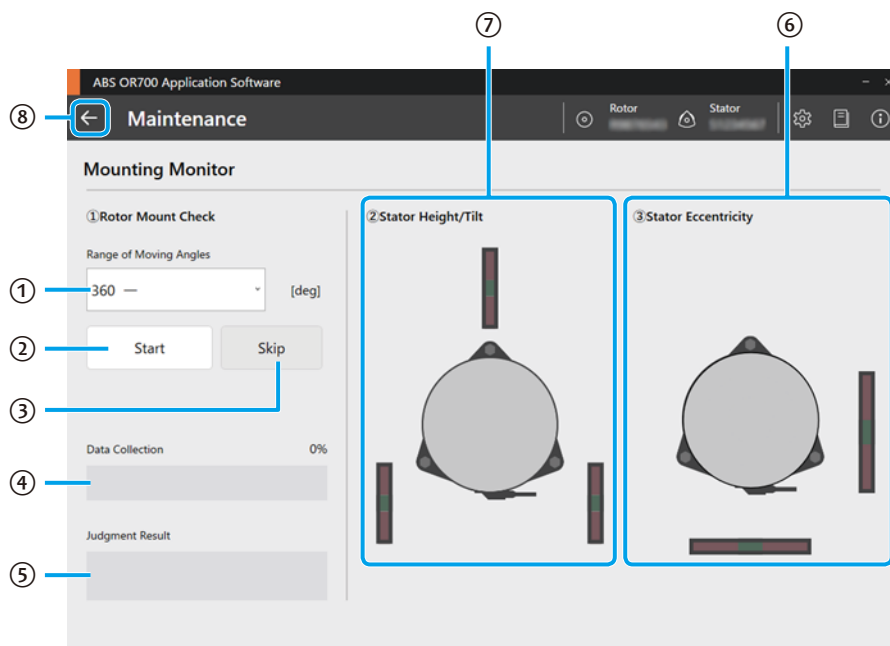
Check the current mounting status during maintenance.

This can be used as a reference to determine whether the mounting is within the specified range.

- 1 Click [Mounting Monitor] on the [Maintenance] screen.



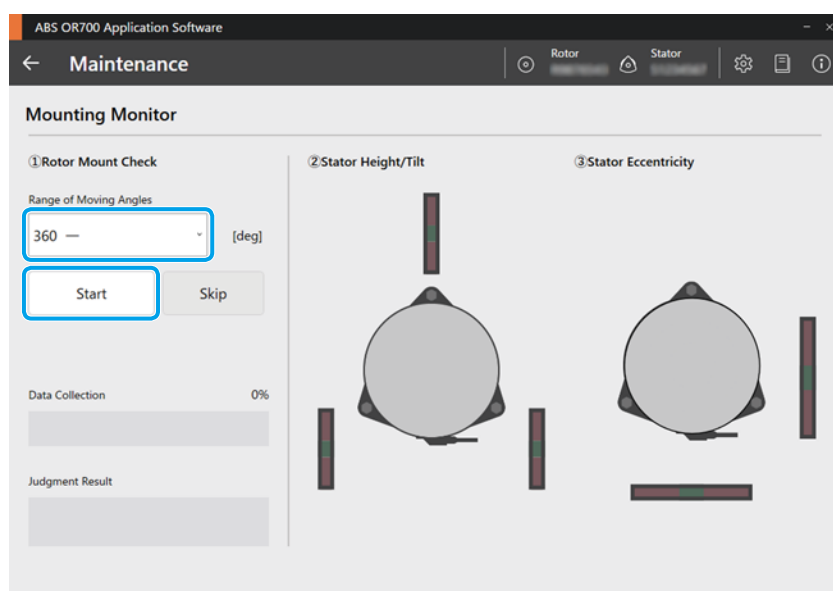
» The [Mounting Monitor] screen appears.



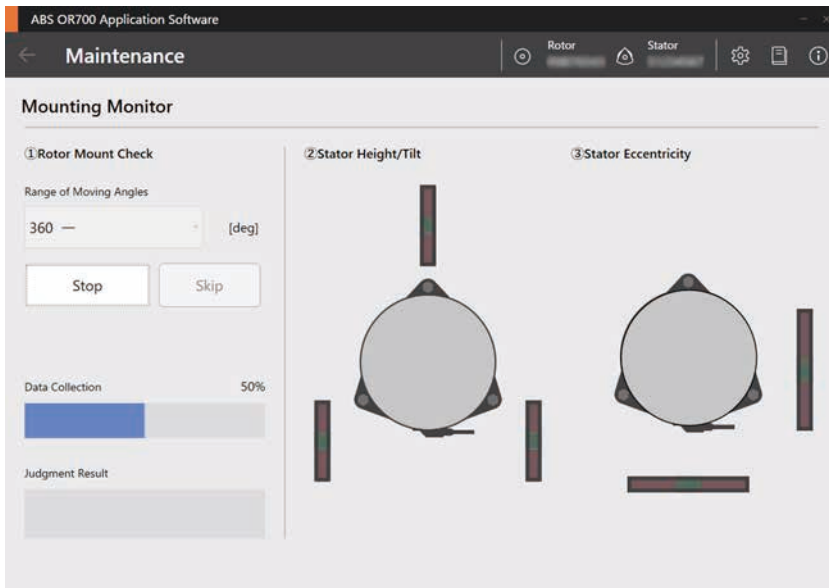
No.	Name	Description
①	Range of Moving Angles	<p>Select the angle of movement of the rotor (rotating shaft).</p> <ul style="list-style-type: none"> • 30–60 • 60–90 • 90–180 • 180–270 • 270–360 • 360– <div style="border: 1px solid black; padding: 5px; margin-top: 10px;"> <p>IMPORTANT</p> <ul style="list-style-type: none"> • Be sure to select the actual angular range within which the equipment with the ABS OR700 Rotary Encoder mounted will operate. • In [Range of Moving Angles], "nn–mm" means nn deg or greater, but less than mm deg. Be sure to rotate the rotor (rotating shaft) at least nn deg. • Calibration is performed within the range selected here (nn deg or greater, but less than mm deg), and the system is electrically optimized. If the equipment is used beyond the selected range, it may not be set to the optimized state. </div>
②	Start button	<p>Starts data collection.</p> <p>Click the [Start] button, then slowly rotate the rotor (rotating shaft).</p> <p>During data collection, the [Start] button label changes to [Stop].</p> <p>When data collection is complete and the result is [Pass], the stator height/tilt and eccentricity status are displayed.</p>
③	Skip button	<p>Skips data collection and rotor mounting verification.</p> <p>Displays a simplified representation of height/tilt and eccentricity status.</p>
④	Data Collection	<p>Displays the progress of data collection as a percentage.</p> <p>Continue data collection until it reaches 100 %.</p>

No.	Name	Description
⑤	Judgment Result	Displays the judgment result of the rotor mounting status. <ul style="list-style-type: none"> • Pass: Rotor mounting is within the specified range. • Fail: Rotor mounting is out of the specified range. Check the mounting status.
⑥	Stator Eccentricity	Displays the magnitude of stator eccentricity. The position of the white bar on the indicator shows the magnitude of stator eccentricity. The green area on the indicator shows the acceptable range.
⑦	Stator Height/Tilt	Displays the stator's height and tilt condition. The position of the white bar on the indicator shows the height of the three adjustment bolts. The green area on the indicator shows the acceptable range. The central white dot indicates the stator tilt. The green area indicates the acceptable range.
⑧	Return button	Returns to the [Maintenance] screen.

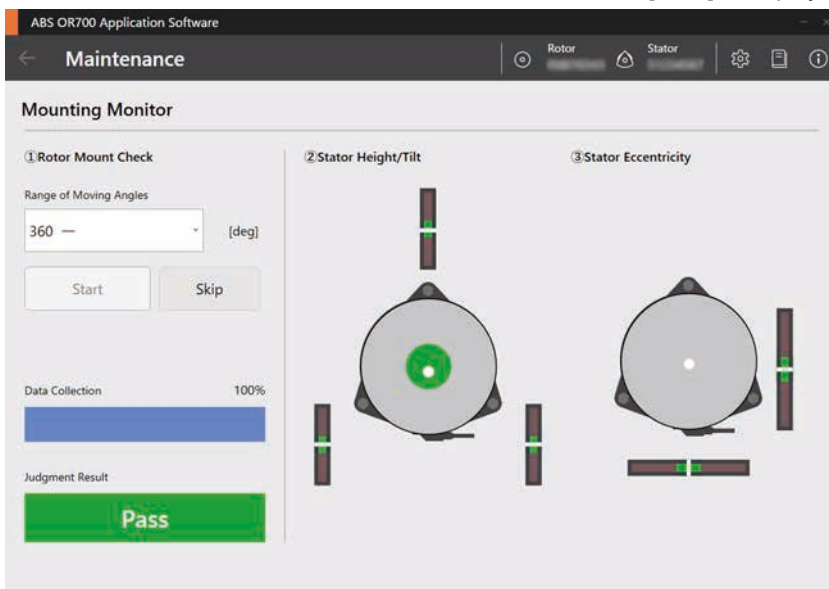
- 2** In [Range of Moving Angles], select the rotor (rotating shaft) movement angle and click the [Start] button.



3 Rotate the rotor (rotating shaft) until the collection progress reaches 100 %.

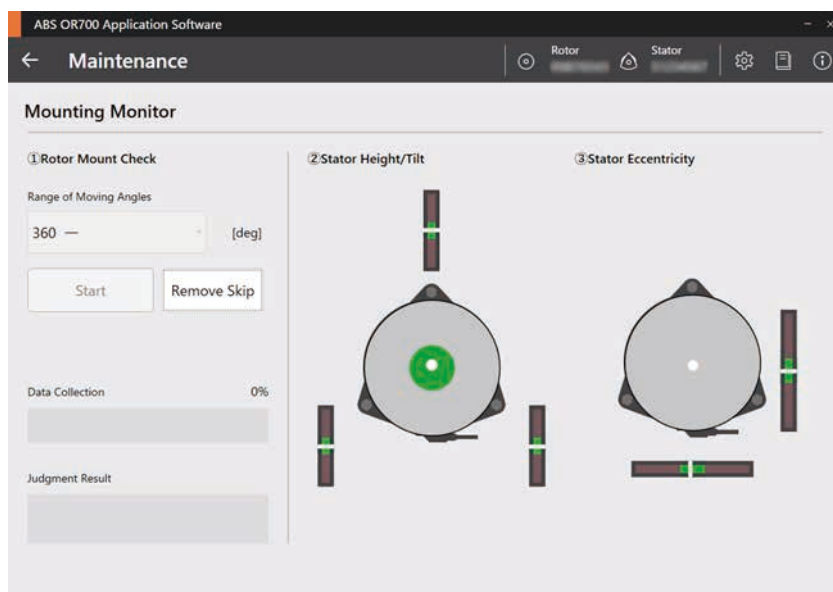


» If data collection is successful and the result is normal, [Pass] is displayed as the judgment result.



IMPORTANT

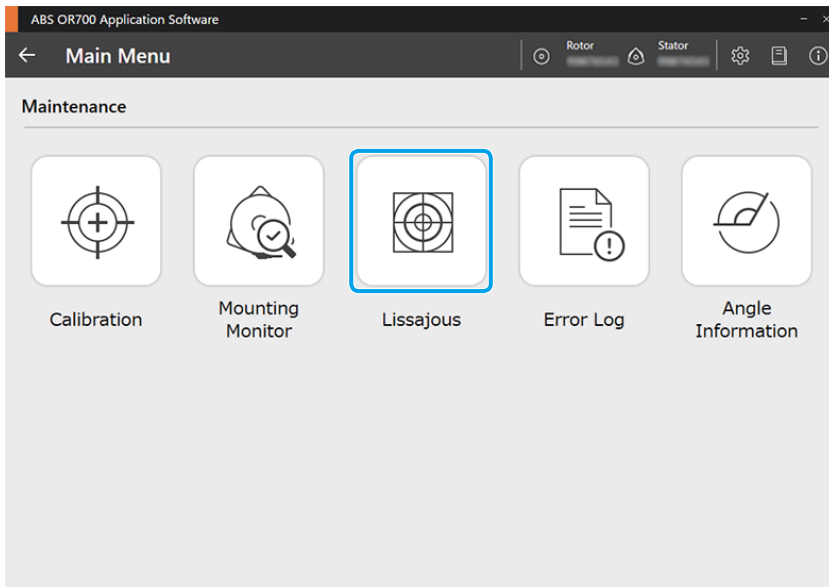
- If you click the [Skip] button, rotor mounting is not verified. The displayed height/tilt and eccentricity status indicates the relative position of the rotor and stator, not the stator position relative to the rotating shaft. In this case, the indicator display and judgment are approximate, serving only as a guide to normal operation.
- To perform mounting adjustment, use [Mounting Support] from the [Main Menu] screen.



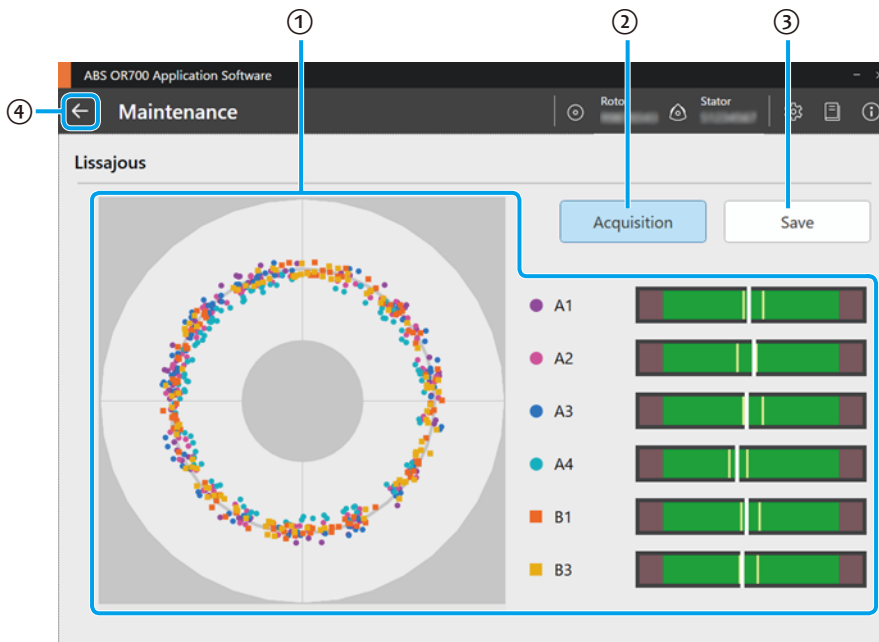
3.4 Check Signal Strength

You can check and save the signal strength as a Lissajous waveform.

- 1 Click [Lissajous] on the [Maintenance] screen.



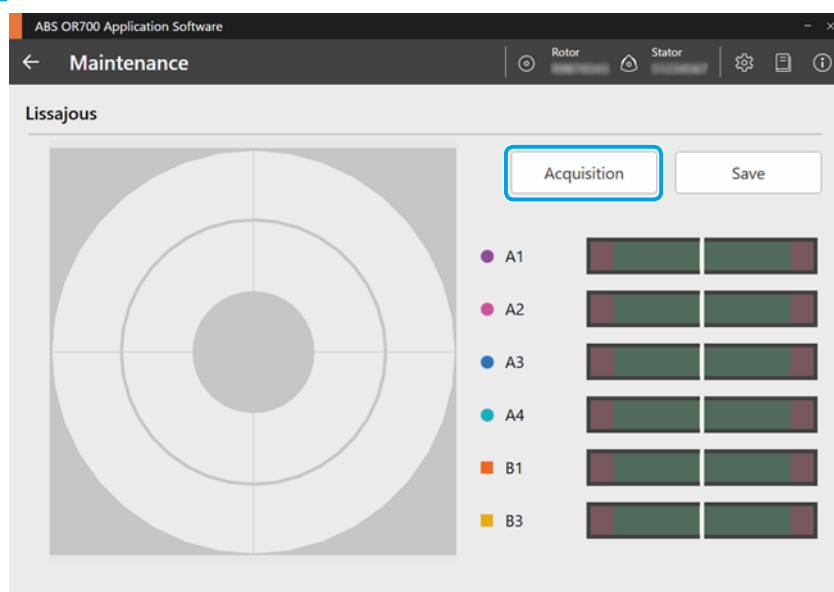
» The [Lissajous] screen appears.



No.	Name	Description
①	Lissajous data	Displays Lissajous signal values. In the graphs on the right, the white lines indicate current value, and the yellow lines indicate minimum (left) and maximum (right) values.
②	Acquisition/Stop button	Starts or stops Lissajous waveform acquisition. <ul style="list-style-type: none"> • Acquisition: Begins acquiring Lissajous waveforms. • Stop: Ends Lissajous waveform acquisition.

No.	Name	Description
③	Save button	Saves a screenshot of the [Lissajous] screen and a CSV file containing the signal strength values. The CSV file output contains the current, minimum, and maximum values, expressed as percentages. You can select the image file type (png, jpeg, bmp, tiff, or gif) when saving. The image and CSV files are saved under the filename "(SerialNo)_YYYYMMDDhhmmss". (YYYY = year, MM = month, DD = day, hh = hour, mm = minute, ss = second)
④	Return button	Returns to the [Maintenance] screen.

2 Click the [Acquisition] button.

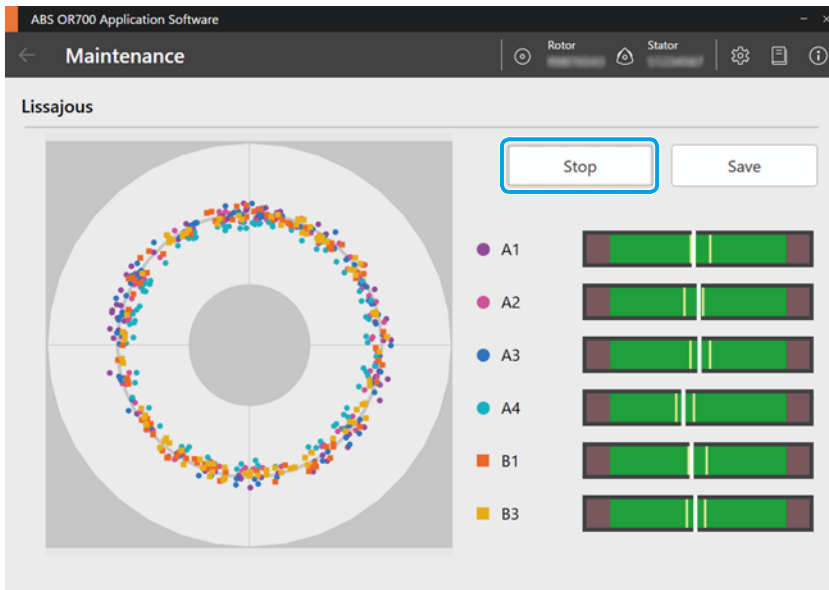


» The Lissajous waveform is displayed.

Tips

Acquired Lissajous data is automatically deleted after a certain time, starting with the oldest entries. If you click the [Acquisition] button again, Lissajous data is cleared and new data acquisition begins.

3 Click the [Stop] button.



» Lissajous waveform acquisition stops.

Tips

If the current value falls outside the acceptable range, the out-of-range area is highlighted in bright red.



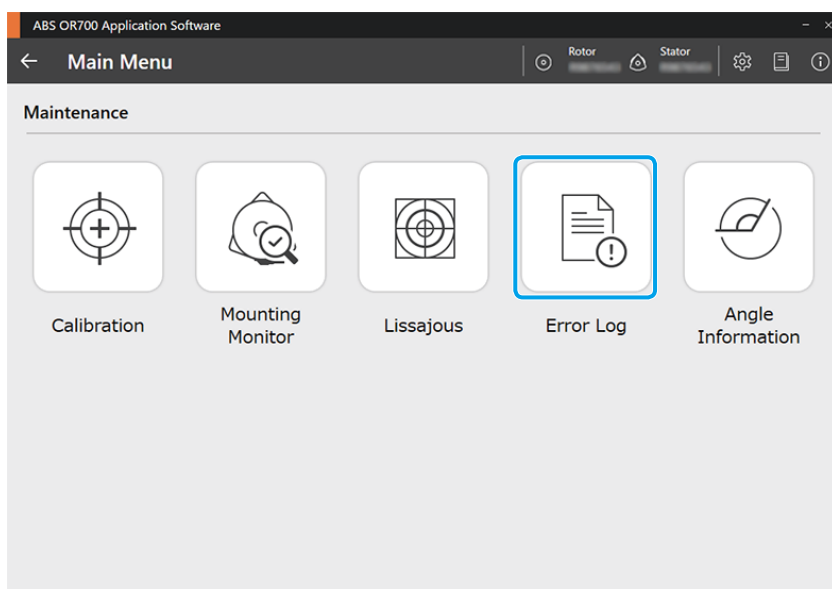
3.5 Check and Clear the Error Log

View, clear, or save to file the error log stored in the rotary encoder.

IMPORTANT

- If there is no error log, nothing will be displayed.
- If the rotary encoder is not connected, the error log saved in the PC will be displayed.

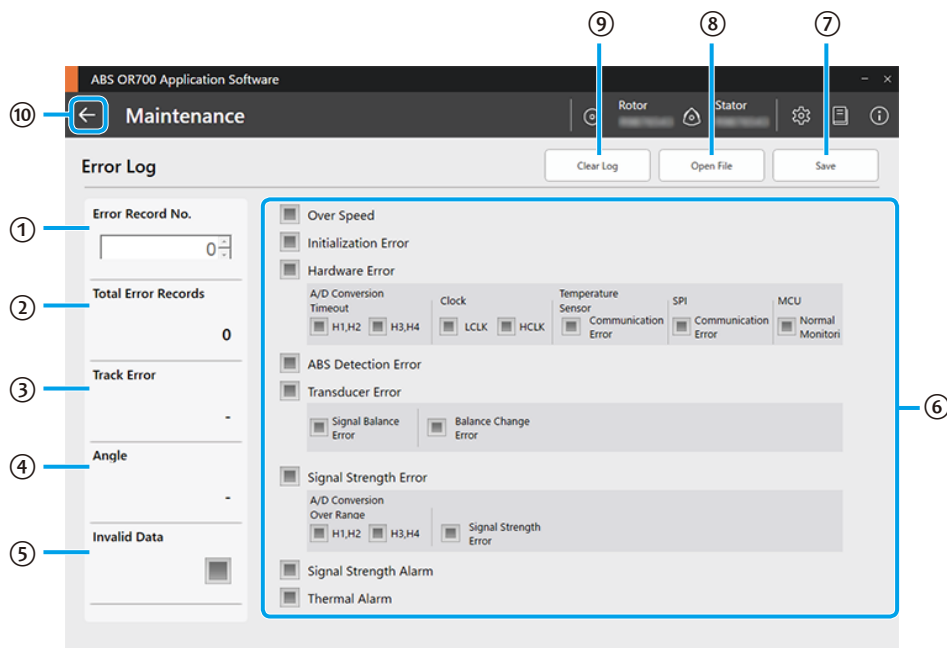
1 Click [Error Log] on the [Maintenance] screen.



» The [Error Log] screen appears.

2 Click the up or down arrow of [Error Record No.].

» The error details are displayed.

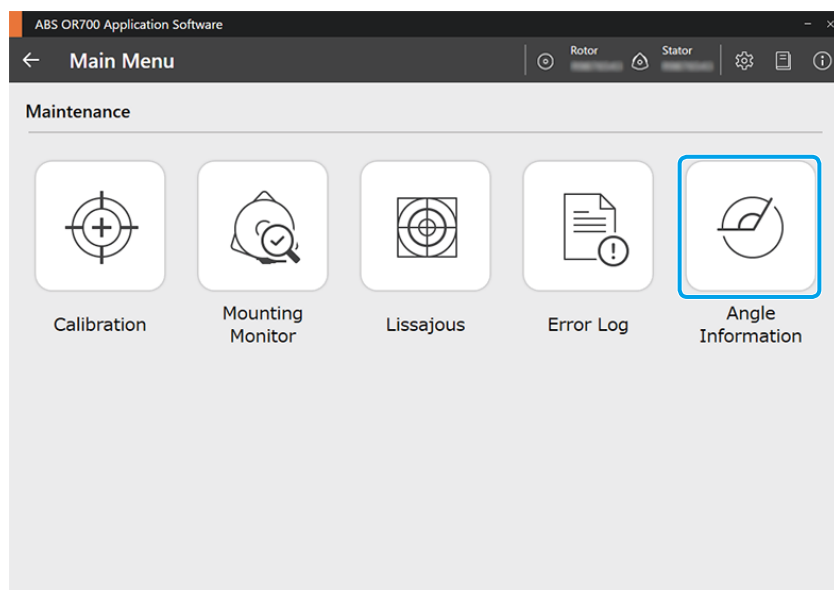


No.	Name	Description
①	Error Record No.	Select the error record number to display.
②	Total Error Records	Displays the total number of error records.
③	Track Error	Displays the track-to-track error value.
④	Angle	Displays the angle at which the error occurred.
⑤	Invalid Data	Displayed when the error log data is abnormal.
⑥	Error Information	Displays the error information. For details, see the separate "ABS OR700 User's Manual".
⑦	Save	Saves the error log to the PC. The file name format is "EH_(SerialNo)_YYYYMMDD-hhmmss". (YYYY = year, MM = month, DD = day, hh = hour, mm = minute, ss = second)
⑧	Open File	Displays the total number of error records.
⑨	Clear Log	Deletes the error log stored in the rotary encoder.
⑩	Return button	Returns to the [Maintenance] screen.

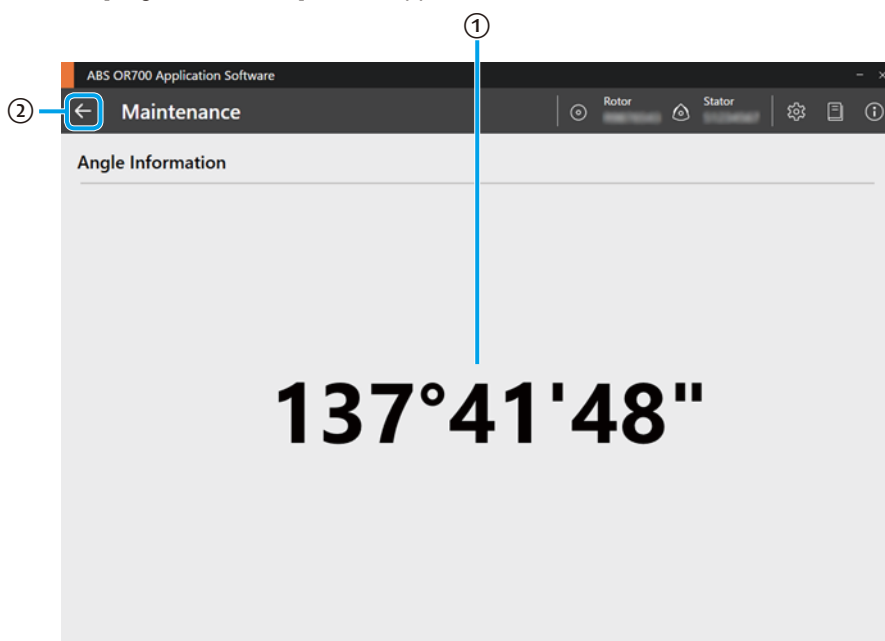
3.6 Display Angle Information

Displays the current rotor angle.

- 1 Click [Angle Information] on the [Maintenance] screen.



» The [Angle Information] screen appears.








No.	Name	Description
①	Angle display area	Displays the current rotor angle.
②	Return button	Returns to the [Maintenance] screen.

MEMO

4 Error Messages

If any of the error messages shown below appears, check the indicated corrective action.

Message	Corrective action
Device connection failed. Choose to try to reconnect or start in limited mode.	Check the communication connection between the PC and the rotary encoder. For details, see  "2.2 Connecting to the PC" on page 19.
Device connection failed. Try Reconnect?	If there is no problem with the cable connection, disconnect and reconnect the communication cable while the application software is running, then re-establish the connection. If communication cannot be established, restart the application software. Or, restart the PC.
Port open failed.	
An error occurred in data acquisition.	Check the possible causes listed below. <ul style="list-style-type: none"> • Check the communication connection between the PC and the rotary encoder. For details, see  "2.2 Connecting to the PC" on page 19. • Rotate within the angle range specified in [Range of Moving Angles]. • To avoid skewing the data, make sure that rotation is not biased toward any specific angles. • Check the rotation speed. For details, see  "2.4 Verifying the Rotor Mounting Status" on page 22. • If the situation persists, see "3. Mounting onto the Machine Main Unit" in the  separate "ABS OR700 User's Manual".
The rotor installation exceeds the specified range. Go to the adjustment screen and adjust again.	Check the possible causes listed below. <ul style="list-style-type: none"> • Check the rotor tightening torque. • Review the rotor mounting adjustment. • Review the installation conditions of the rotary encoder. For details, see "3 Installation onto the Machine Main Unit" in the  separate "ABS OR700 User's Manual".
The deviation of the tilt or eccentricity of the stator exceeds the specified range. Go to the adjustment screen and adjust again.	

MEMO

5 Troubleshooting

Problem	Cause	Corrective action
Communication cannot be established even when the rotary encoder is connected to the PC. Or the connection is intermittently interrupted.	<ul style="list-style-type: none"> • USB cable connection failure • Faulty PC connector • USB driver not installed on the PC • Use of a USB hub or expansion board 	<ul style="list-style-type: none"> • Check the communication cable connections. • Verify that the USB driver is installed. • Check the communication connection using a USB port on the PC itself. • Disconnect and reconnect the communication cable to the PC. • Restart the application software. • Restart the PC.
The application software crashes unexpectedly.	<ul style="list-style-type: none"> • PC specifications are insufficient. • PC storage or memory is insufficient. • Communication cable disconnected during operation. 	<ul style="list-style-type: none"> • Use a PC that fulfills required specifications. • Ensure sufficient PC storage and memory capacity. • Check the communication cable connections. • Restart the application software. • Restart the PC.

SERVICE NETWORK

*As of July 2025

Europe

Mitutoyo Europe GmbH

Borsigstrasse 8-10, 41469 Neuss, GERMANY

TEL: 49 (0)2137 102-0

FAX: 49 (0)2137 102-351

Mitutoyo CTL Germany GmbH

Von-Gunzert-Strasse 17, 78727 Oberndorf, GERMANY

TEL: 49 (0)7423 8776-0

FAX: 49 (0)7423 8776-99

KOMEG Industrielle Messtechnik GmbH

Zum Wasserwerk 3, 66333 Völklingen, GERMANY

TEL: 49 (0)6898 91110

FAX: 49 (0)6898 9111100

Germany

Mitutoyo Deutschland GmbH

Borsigstrasse 8-10, 41469 Neuss, GERMANY

TEL: 49 (0)2137 102-0

FAX: 49 (0)2137 86 85

M³ Solution Center Hamburg

Tempowerkring 9·im HIT-Technologiepark
21079 Hamburg, GERMANY

TEL: 49 (0)40 791894-0

FAX: 49 (0)40 791894-50

M³ Solution Center Berlin

Ernst-Lau-Straße 6, 12489 Berlin, GERMANY

TEL: 49(0)30 2611 267

FAX: 49 30 67988729

M³ Solution Center Eisenach

Neue Wiese 4, 99817 Eisenach, GERMANY

TEL: 49 (0)3691 88909-0

FAX: 49 (0)3691 88909-9

M³ Solution Center Ingolstadt

Marie-Curie-Strasse 1A, 85055 Ingolstadt, GERMANY

TEL: 49 (0)841 954920

FAX: 49 (0)841 9549250

M³ Solution Center Leonberg

Am Längenbühl 3, 71229 Leonberg, GERMANY

TEL: 49 (0)7152 6080-0

FAX: 49 (0)7152 608060

Mitutoyo Deutschland GmbH - Small Tool Sales Division

Am Längenbühl 4, 71229 Leonberg, GERMANY

TEL: 49 (0)7152 9237-0

FAX: 49 (0)7152 9237-29

U.K.

Mitutoyo (UK) Ltd. HQ

Joule Road, West Point Business Park,
Andover, Hampshire SP10 3UX, UNITED KINGDOM

TEL: 44 (0)1264 353123

FAX: 44 (0)1264 354883

Coventry M³ Solution Centre

Unit6, Banner Park, Wickmans Drive, Coventry,
West Midlands CV4 9XA, UNITED KINGDOM

TEL: 44 (0)2476 426300

Halifax M³ Solution Centre

Lowfields Business Park, Navigation Close,
Elland, West Yorkshire HX5 9HB, UNITED KINGDOM

TEL: 44 (0)1422 375566

East Kilbride M³ Solution Centre

The Bairds Building, Rankine Avenue, Scottish
Enterprise Technology Park, East Kilbride G75
0QF, UNITED KINGDOM

TEL: 44 (0)1355 581170

France

Mitutoyo France

Paris Nord 2-123 rue de la Belle Etoile, BP
59267 ROISSY EN FRANCE 95957 ROISSY
CDG CEDEX, FRANCE

TEL: 33 (0)149 38 35 00

M³ Solution Center LYON

Parc Mail 523, cours du 3ème millénaire,
69791 Saint-Priest, FRANCE

TEL: 33 (0)149 38 35 70

M³ Solution Center STRASBOURG

Parc de la porte Sud, Rue du pont du péage,
67118 Geispolsheim, FRANCE

TEL: 33 (0)149 38 35 80

M³ Solution Center CLUSES

290 Avenue des Lacs, 74950 Scionzier,
FRANCE

TEL: 33 (0)1 49 38 35 90

M³ Solution Center TOULOUSE

Aeroparc Saint Martin Cellule B08 ZAC de
Saint Martin du Touch 12 rue de Caulet 31300
Toulouse, FRANCE

TEL: 33 (0)1 49 38 42 90

M³ Solution Center RENNES

2, rue Claude Chappe, PA le Vallon - ZAC
Mivoie, 35230 Noyal-Châtillon-sur-Seiche,
FRANCE

TEL: 33 (0)1 49 38 42 10

Italy

Mitutoyo Italiana S.r.l.

Corso Europa, 7 - 20045 Lainate (MI), ITALY

TEL: 39 02 935781

FAX: 39 02 93578255

M³ Solution Center BOLOGNA

Via Stalingrado 67/22D 40128 Bologna, ITALY

TEL: 39 02 93578215

M³ Solution Center CHIETI

Contrada Santa Calcagna - 66020 Rocca S. Giovanni (CH), ITALY

TEL: 39 02 93578280

FAX: 39 02 93578255

M³ Solution Center PADOVA

Via G. Galilei 21/F - 35035 Mestrino (PD), ITALY

TEL: 39 02 93578268

FAX: 39 02 93578255

Netherlands

Mitutoyo Nederland B.V.

Storkstraat 30, 3905 KX Veenendaal, THE NETHERLANDS

TEL: 31(0)318-534911

Mitutoyo Nederland B.V. / M³ Solution Center Enschede

Institutenweg 50, 7521 PK Enschede, THE NETHERLANDS

TEL: 31(0)318-534911

Mitutoyo Nederland B.V. / M³ Solution Center Eindhoven

De Run 1115, 5503 LB Veldhoven, THE NETHERLANDS

TEL: 31(0)318-534911

Mitutoyo Research Center Europe B.V.

De Rijn 18, 5684 PJ Best, THE NETHERLANDS

TEL: 31(0)499-320200

FAX: 31(0)499-320299

Belgium

Mitutoyo Belgium N.V. / M³ Solution Center Melsele

Schaarbeekstraat 20, B-9120 Melsele, BELGIUM

TEL: 32 (0)3-2540444

Sweden

Mitutoyo Scandinavia AB

Släntvägen 6, 194 61 Upplands Väsby, SWEDEN

TEL: 46 (0)8 594 109 50

Mitutoyo Scandinavia AB / M³ Solution Center Alingsås

Ängsvaktaregatan 3A, 441 38 Alingsås, SWEDEN

TEL: 46 (0)8 594 109 50

Mitutoyo Scandinavia AB / M³ Solution Center Värnamo

Kalkstensvägen 7, 331 44 Värnamo, SWEDEN

TEL: 46 (0)8 594 109 50

Switzerland

Mitutoyo (Schweiz) AG

Steinackerstrasse 35, 8902 Urdorf, SWITZERLAND

TEL: 41 (0)447361150

Mitutoyo (Suisse) SA

Rue Galilée 4, 1400 Yverdon-les Bains, SWITZERLAND

TEL: 41 (0)244259422

Poland

Mitutoyo Polska Sp.z o.o.

Skrzypowa 1, 54-530 Wrocław, POLAND

TEL: 48 (0)71354 83 50

FAX: 48 (0)71354 83 55

Czech Republic

Mitutoyo Česko s.r.o.

Dubská 1635, 415 01 Teplice, CZECH REPUBLIC

TEL: 420 417-514-011

Email: info@mitutoyo.cz

Mitutoyo Česko s.r.o. M³ Solution Center Ivančice

Ke Karlovu 62/10, 664 91 Ivančice, CZECH REPUBLIC

TEL: 420 417-514-011

Email: info@mitutoyo.cz

Mitutoyo Česko s.r.o. M³ Solution Center Ostrava Mošnov

Mošnov 314, 742 51 Mošnov, CZECH REPUBLIC

TEL: 420 417-514-050

Email: info@mitutoyo.cz

Mitutoyo Česko s.r.o. Slovakia Branch

Šoltésovej 346/1, 017 01 Považská Bystrica, SLOVAKIA

TEL: 421 948-595-590

Email: info@mitutoyo.sk

Hungary

Mitutoyo Hungária Kft.

Galamb József utca 9, 2000 Szentendre, HUNGARY

TEL: 36 (30) 6410210

Romania**Mitutoyo Romania SRL**

1A Drumul Garii Odai Street, showroom,
Ground Floor, 075100 OTOPENI-ILFOV, RO-
MANIA

TEL: 40 (0)311012088

FAX: +40 (0)311012089

Showroom in Brasov

Strada Ionescu Crum Nr.1, Brasov Business
Park Turnul 1, Mezanin, 500446
Brasov-Judetul Brasov, ROMANIA

TEL/FAX: 40 (0)371020017

Finland**Mitutoyo Scandinavia AB Finnish Branch**

Autokeskuksentie 16B, 33960 Pirkkala, FIN-
LAND

TEL: 358 (0)40 355 8498

Austria**Mitutoyo Austria GmbH**

Salzburger Straße 260/2 und 260/3, 4600
Wels, AUSTRIA

TEL: 43 (0)7242 219 998

**Mitutoyo Austria GmbH Goetzis Regional
showroom**

Lastenstrasse 48a, 6840 Götzis, AUSTRIA

Singapore**Mitutoyo Asia Pacific Pte. Ltd.****Head office / M³ Solution Center**

24 Kallang Avenue, Mitutoyo Building,
SINGAPORE 339415

TEL:(65)62942211

FAX:(65)62996666

Malaysia**Mitutoyo (Malaysia) Sdn. Bhd.****Kuala Lumpur Head Office / M³ Solution
Center**

Mah Sing Integrated Industrial Park, 4, Jalan
Utariid U5/14, Section U5, 40150 Shah Alam,
Selangor, MALAYSIA

TEL:(60)3-78459318

FAX:(60)3-78459346

Penang Branch office / M³ Solution Center

30, Persiaran Mahsuri 1/2, Sunway Tunas,
11900 Bayan Lepas, Penang, MALAYSIA

TEL:(60)4-6411998

FAX:(60)4-6412998

Johor Branch office / M³ Solution Center

70 (Ground Floor), Jalan Molek 1/28, Taman
Molek, 81100 Johor Bahru, Johor, MALAYSIA

TEL:(60)7-3521626

FAX:(60)7-3521628

Thailand**Mitutoyo (Thailand) Co., Ltd.****Bangkok Head Office / M³ Solution Center**

2327 Onnut Road Kwaeng Onnut Khet Suanlu-
ang Bangkok 10250, THAILAND

TEL:(66)2080 3500

Chonburi Branch / M³ Solution Center

7/1, Moo 3, Tambon Bowin, Amphur Sriracha,
Chonburi 20230, THAILAND

TEL:(66)2080 3563

FAX:(66)3834 5788

ACC Branch / M³ Solution Center

122/8, 122/9, Moo 6, Tambon Donhuaroh,
Amphur Muangchonburi, Chonburi 20000,
THAILAND

TEL:(66)2080 3565

Indonesia**PT. Mitutoyo Indonesia****Head Office / M³ Solution Center**

Jalan Sriwijaya No.26 Desa cibatu Kec. Cika-
rang Selatan Kab. Bekasi 17530, INDONESIA

TEL: (62)21-2962 8600

FAX: (62)21-2962 8604

Batam Branch Office

Business Center Adhya Building 3rd Floor
Kompleks Permata Niaga Blok A No. 1, Jalan
jendral Sudirman Kelurahan Sukajadi, Keca-
matan Batam Kota, Kepulauan Riau 29444,
INDONESIA

TEL: (62)-778-4888000

Vietnam**Mitutoyo Vietnam Co., Ltd****Hanoi Head Office / M³ Solution Center**

1st & 2nd floor, MHDl Building, No. 60 Hoang
Quoc Viet Road, Nghia Do Ward, Cau Giay
District, Hanoi, VIETNAM

TEL:(84)24-3768-8963

FAX:(84)24-3768-8960

**Ho Chi Minh City Branch Office / M³ Solu-
tion Center**

Unit No. B-00.07, Ground Floor, C1 Building,
No. 6, Street D9, An Loi Dong Ward, Thu Duc
City, Ho Chi Minh City, VIETNAM

TEL:(84)28-3840-3489

FAX:(84)28-3840-3498

Hai Phong City Branch Office

Room 511, 5th Floor, Thanh Dat 3 Building, No.
4 Le Thanh Tong Street, May To Ward, Ngo
Quyen District, Hai Phong City, VIETNAM

TEL:(84)22-5398-9909

Philippines

Mitutoyo Philippines, Inc.

Head Office / M³ Solution Center

Unit 1B & 2B LTI, Administration Building 1,
Annex 1, North Main Avenue, Laguna Tech-
nopark, Binan Laguna 4024, PHILIPPINES
TEL/FAX:(63) 49 544 0272

India

Mitutoyo South Asia Pvt. Ltd. Head Office

C-122, Okhla Industrial Area, Phase-I,
New Delhi-110 020, INDIA
TEL: (91) 11-40578485/86

MSA Technical Center

Plot no. 65, Ground Floor, Udyog Vihar,
Phase-4 Gurgaon, Haryana - 122016, INDIA
TEL : (91) 124-2340286/287

Mumbai Region Head office

303, Sentinel Hiranandani Business Park
Powai, Mumbai-400 076, INDIA
TEL: (91) 22-25700684/685/837/839

Pune Office / M³ Solution Center

G4/G5, Pride Kumar Senate, Off. Senapati
Bapat Road, Pune-411 016, INDIA
TEL:(91) 20-25660043/44/45

Ahmedabad Office / M³ Solution Center

A-104 & A-105, First Floor, Solitaire Corporate
Park, Near Divya Bhaskar Press, S.G. Road,
Ahmedabad - 380 015, INDIA
TEL: (91) 079 - 29704902/903

Bengaluru Region Head office / M³ Solu- tion Center

116/117-2, Ground Floor, Sy. No. 93 & 94, 3rd
Phase, Peenya Industrial Area, Bengaluru-560
058, INDIA
TEL: (91) 80-25630946/47/48/49

Coimbatore Office

Regus, Srivari Srimath, 3rd Floor, Door
No:1045, Avinashi Road, Coimbatore - 641
018,INDIA
TEL: (91) 9345005663

Chennai Office / M³ Solution Center

No. 624, Anna Salai Teynampet, Chennai-600
018, INDIA
TEL: (91) 44-24328823/24/25

Kolkata Office

Unit No. 1208,Om Tower, 32,J.L.Nehru Road,
Kolkata-700 071, INDIA
TEL: (91) 33-22267088/40060635/22266817

Taiwan

Mitutoyo Taiwan Co., Ltd. / M³ Solution Center Taipei

4F., No.71, Zhouzi St., Neihu Dist.,Taipei City
114, TAIWAN
TEL:886(2)5573-5900
FAX:886(2)8752-3267

Taichung Branch / M³ Solution Center Taichung

1F., No. 299, Gaotie 1st Rd., Wuri Dist., Taic-
hung City 414, TAIWAN
TEL:886(4)2338-6822
FAX:886(4)2338-6722

Kaohsiung Branch / M³ Solution Center Kaohsiung

1F., No.31-1, Haibian Rd., Lingya Dist.,
Kaohsiung City 802, TAIWAN
TEL:886(7)334-6168
FAX:886(7)334-6160

South Korea

Mitutoyo Korea Corporation

Head Office / M³ Solution Center

33, Eungyejungang-ro 306beon-gil, Siheung-si,
Gyeonggi-do, 15120 KOREA
TEL:82(31)361-4200
FAX:82(31)361-4201

Busan Office / M³ Solution Center

(3150-3, Daejeo 2-dong) 8,Yutongdanji 1-ro
49beon-gil, Gangseo-gu, Busan, 46721 KO-
REA
TEL:82(51)324-0103
FAX:82(51)324-0104

Daegu Office / M³ Solution Center

(Galsan-dong, Daegu Business Center), 301-
Ho, 217, Seongseogongdan-ro, Dalseo-gu,
Daegu 42704 KOREA
TEL:82(53)593-5602
FAX:82(53)593-5603

China

Mitutoyo Measuring Instruments (Shang- hai) Co., Ltd.

18/F, NEW BUND Shun Tak Center, No.18,
Lane 666, West Haiyang Road, Pudong New
District, Shanghai 200124, CHINA
TEL:86(21)5836-0718
FAX:86(21)5836-0717

Suzhou Office / M³ Solution Center China (Suzhou)

1/2 Floor, Building 4, No.175 Songbei Road,
Suzhou Free Trade Zone, Suzhou City, Jiangsu
215000, CHINA
TEL:86(512)6522-1790
FAX:86(512)6251-3420

Wuhan Office / M³ Solution Corner

Room 1701, Wuhan Wanda Center, No. 96,
Linjiang Road, Wuchang District, Wuhan
Hubei 430060, CHINA

TEL:86(27)8544-8631

FAX:86(27)8544-6227

Chengdu Office

Room 1-102, 1st Floor, Unit 1, Building 1, No.
24, Wannian Road (Wanniancang Cool), Chen-
ghua District, Chengdu City, Sichuan 610056,
CHINA

TEL:86(28)8671-8936

FAX:86(28)8671-9086

Hangzhou Office

Room 329, 3F, Building D, West Square of
Hangzhoudong Railway Station, No. 260 Xin-
feng Road, Shangcheng District, Hangzhou
City, Zhejiang 310002, CHINA

TEL: 86(571)8288-0319

FAX: 86(571)8288-0320

**Tianjin Office / M³ Solution Center China
(Tianjin)**

Room D 12/F, TEDA Building, No.256 Jie-fang
Nan Road Hexi District, Tianjin 300042, CHINA

TEL:86(22)5888-1700

FAX:86(22)5888-1701

Changchun Office

Room 815, 8F, Building A1, Upper East
International No.3000 Dongsheng Street,
Erdao District, Changchun, Jilin, 130031, CHI-
NA

TEL:86(431)8192-6998

FAX:86(431)8192-6998

Chongqing Office

Room 1312, Building 3, Zhongyu Plaza, No.86,
Hongjin Avenue, Longxi Street, Yubei District,
Chongqing, 400000, CHINA

TEL:86(23)6595-9950

FAX:86(23)6595-9950

Qingdao Office

Room 638, 6F, No.192 Zhengyang Road,
Chengyang District, Qingdao, Shandong,
266109, CHINA

TEL:86(532)8096-1936

FAX:86(532)8096-1937

Xi'an Office

Room 1503 Jianke Building, No.99 Yanta Road,
Beilin District, Xi'an City, Shaanxi 710054,
CHINA

TEL:86(29)8538-1380

FAX:86(29)8538-1381

**Dalian Office / M³ Solution Center China
(Dalian)**

Room A-106 Shuijing SOHO, No.16 Harbin
Road, Economic Development Zone, Dalian,
116600 CHINA

TEL:86(411)8718 1212

FAX:86(411)8754-7587

Zhengzhou Office

Room 5003, 50th Floor, South Tower of
Greenland Centre, No.36 Yulin North Road,
Zhengdong New District, Zhengzhou, Henan,
450000, CHINA

TEL:86(371)6097-6436

FAX:86(371)6097-6981

**Dongguan Office / M³ Solution Center Chi-
na (Dongguan)**

Room 801, No 65, Chang'an Section Guan-
chang Road, Chang'an Town, Dongguan City,
Guangdong 523841, CHINA

TEL:86(769)8541 7715

FAX:86(769)-8541 7745

Fuzhou Office

Unit 03, 7th floor of East Tower, Sansheng
International Center, No.118 Wusi Road, Gulou
Distrit, Fuzhou City, Fujian 350001, CHINA

TEL: 86 (591) 8761 8095

FAX: 86 (591) 8761 8096

Changsha Office

Room 2207, Building 1, Shiner International
Plaza, No. 88, Kaiyuan Middle Road, Chang-
sha City, Hunan 410100, CHINA

TEL: 86 (731) 8401 9276

FAX: 86 (731) 8401 9376

Changzhou Office

Room 1502, Joint Financial Tower, No.255,
Tongjiang North Road, Tianning District,
Changzhou City, Jiangsu 2130002, CHINA

TEL:86(519)8815 8319

FAX:86(519)8815 8319

Wenzhou Office

Room 512, Building 4, Xinjingdujiayuan,
Sanyang Street, Ouhai District, Wenzhou City,
Zhejiang 325014, CHINA

TEL:86(577)8641 5280

Shunde Office

Room 1603, Buliding 26, Vanke Golden River-
side Plaza Phase II, No.13 Mid DeSheng Road,
ShunDe District, Foshan City, Guangdong
528300, CHINA

TEL/FAX: 86(757)2228 8621

Hefei Office

UnitB3111-1, 1F, Block B3, Hulianbaodi Huiyu-
an, Heping Road, Yaohai District, Hefei City,
Anhui 230001, CHINA

TEL: 86(551)6560 1006

Mitutoyo Measuring Technology (Suzhou) Co., Ltd.

1/2 Floor, Building 4, No.175 Songbei Road,
Suzhou Free Trade Zone, Suzhou City, Jiangsu
215000, CHINA

TEL:86(512)6252-2660

FAX:86(512)6252-2580

USA

Mitutoyo America Corporation

965 Corporate Blvd., Aurora, IL 60502, U.S.A.

TEL:1-(630)820-9666 Toll Free No. 1-888-648-8869

FAX:1-(630)978-3501

Headquarters (Aurora) / M³ Solution Center

965 Corporate Blvd., Aurora, IL 60502, U.S.A.

Seattle (Renton) Office / M³ Solution Center

1000 SW 34th St. Suite G, Renton,
WA 98057 U.S.A.

TEL:1-(888)-648-8869

Houston Office / M³ Solution Center

4560 Kendrick Plaza Drive Suite 120 Houston,
TX 77032, U.S.A.

TEL:1-(888)-648-8869

FAX:1-(281)227-0937

Cincinnati (Mason) Office / M³ Solution Center

6220 Hi-Tek Ct., Mason, OH 45040, U.S.A.

TEL:1-(888)-648-8869

FAX:1-(513)754-0718

Detroit (Novi) Office / M³ Solution Center

46850 Magellan Drive, Suite 100 Novi, MI
48377, U.S.A.

TEL:1-(888)-648-8869

FAX: 1-(248)-926-0928

Los Angeles (City of Industry) Office / M³ Solution Center

16925 E. Gale Ave., City of Industry, CA 91745,
U.S.A.

TEL:1-(888)-648-8869

FAX:1-(626)369-3352

Charlotte (Huntersville) Office / M³ Solution Center

11515 Vanstory Dr., Suite 140, Huntersville, NC
28078, U.S.A.

TEL:1-(888)-648-8869

FAX:1-(704)875-9273

Boston (Marlborough) Office / M³ Solution Center

753 Forest Street, Suite 110, Marlborough,
MA 01752, U.S.A.

TEL:1-(888)648-8869

FAX:1-(508)485-0782

West Chester (Ohio) / Metrology Service Center

8876 Beckett road, West Chester, OH 45069,
USA

TEL:1-(888)-648-8869

Mitutoyo America Corporation Calibration Lab

965 Corporate Blvd., Aurora, IL 60502, U.S.A.

TEL:1-(888)-648-8869

FAX:1-(630)978-6477

Mitutoyo America Corporation CT-Lab Chicago

965 Corporate Blvd., Aurora, IL 60502, U.S.A.

TEL: 1-(888)-648-8869

FAX: 1-(630)-820-3418

Mitutoyo Research & Development America, Inc.

11533 NE 118th St., Kirkland,
WA 98034-7111, U.S.A.

TEL:1-(425)821-3906

FAX:1-(425)821-32280

Mitutoyo Research & Development America,
Inc. - California Office

16925 Gale Ave. City of Industry,
CA 91745-1806 U.S.A.

TEL: 1-(425)821-3906

FAX: 1-(425)821-3228

Canada

Mitutoyo Canada Inc.

2121 Meadowvale Blvd., Mississauga,
Ont. L5N 5N1., CANADA

TEL:1-(905)821-1261

FAX:1-(905)821-4968

Montreal Office

7075 Place Robert-Joncas Suite 129, Montreal,
Quebec H4M 2Z2, CANADA

TEL:1-(514)337-5994

FAX:1-(514)337-4498

Brazil

Mitutoyo Sul Americana Ltda.

Head office / M³ Solution Center

Avenida Mimes nº 25 – Loteamento Multivias II,
Jardim Ermida I, CEP 13212-216 Jundiá - SP,
BRASIL

TEL: 55 (11) 5643-0004/0041

Filial Curitiba / M³ Solution Center

Rua Sergipe, nº 101, Sala A, Bairro Boneca do
Iguaçu, São José dos Pinhais – Paraná – BRA-
SIL CEP 83040120

TEL: 55 (41) 3534-1728

Filial Joinville / M³ Solution Center

Rua Sorocaba, No.265, Bairro Floresta, Join-
ville, Santa Catarina, BRASIL, CEP 89212-210

TEL: 55 (47) 3025-8062

Filial Porto Alegre / M³ Solution Center

Rua Emilio Boeckel nº 325, Bairro: Flao, São Leopoldo - RS, BRASIL CEP 93020-600
TEL: 55 (51) 3037-9383

Argentina

Mitutoyo Sul Americana Ltda.

Argentina Branch / M³ Solution Center

AV. MITRE 1249 Piso. PB- FLORIDA – BUE-
NOS AIRES ARGENTINA
TEL:54 (11) 4730-1433
FAX:54 (11) 4730-1411

Mexico

Mitutoyo Mexicana, S.A. de C.V.

Industria Eléctrica No.15, Parque Industri-
al, Naucalpan de Juárez, Estado de México
C.P.53370, MÉXICO

TEL: 52 (01-55) 5312-5612
FAX: 52 (01-55) 5312-3380

Monterrey Office / M³ Solution Center

Blv. Interamericana No. 103, Parque Industrial
FINSA, C.P. 66636 Apodaca, N.L., MÉXICO
TEL: 52(01-81) 8398-8227/8228/8242/8244
FAX: 52(01-81) 8398-8226

Tijuana Office / M³ Solution Center

Calle José María Velazco 10501-C, Col. Cd.
Industrial Nueva Tijuana, C.P. 22500 Tijuana,
B.C., MÉXICO
TEL: 52 (01-664) 647-5024

Querétaro Office / M³ Solution Center

Av. Cerro Blanco No.500-1, Colonia Centro
Sur, Querétaro, Querétaro, C.P. 76090, MÉX-
ICO
TEL: 52 (01-442) 340-8018, 340-8019 and
340-8020
FAX: 52 (01-442) 340-8017

**Mitutoyo Mexicana, S.A. de C.V. Querétaro
Calibration Laboratory**

Av. Cerro Blanco 500 30 Centro Sur,
Querétaro, Querétaro, C.P. 76090, MÉXICO
TEL: 52 (01-442) 340-8018, 340-8019 and
340-8020
FAX: 52 (01-442) 340-8017

Aguascalientes Office / M³ Solution Center

Av. Aguascalientes No. 622, Local 15 Centro
Comercial El Cilindro Fracc. Pulgas Pandas
Norte, C.P. 20138, Aguascalientes, Ags. MÉX-
ICO
TEL: 52 (01-449) 174-4140 and 174-4143

Irapuato Office / M³ Solution Center

Boulevard a Villas de Irapuato No. 1460 L.1
Col. Ejido
Irapuato C.P. 36643
Irapuato, Gto., MÉXICO
TEL: 52 (01-462) 144-1200 and 144-1400

Revision Record

Date of publication	Revision status	Details of revision
October 1, 2025	First edition	Publication

Mitutoyo Corporation

20-1, Sakado 1-Chome, Takatsu-ku, Kawasaki-shi, Kanagawa 213-8533, Japan
Tel: +81 (0)44 813-8230 Fax: +81 (0)44 813-8231
Home page: <https://www.mitutoyo.co.jp/global.html>

For the EU Directive, Authorized representative and importer in the EU:
Mitutoyo Europe GmbH
Borsigstrasse 8-10, 41469 Neuss, Germany

For the UK Regulation, Authorized representative and importer in the UK:
Mitutoyo (UK) Ltd.
Joule Road, West Point Business Park, Andover, Hampshire SP10 3UX, UNITED KINGDOM