

# U-WAVEPAK-BM

## User's Manual

Please read this "User's Manual" before use to ensure correct use.  
After reading, be sure to keep it in a place where you can read it anytime.

**Mitutoyo**

Issued on May 30, 2020 (1)

**Notice: Please make sure to confirm the following before installation**

This program is created and distributed for free by Mitutoyo as part of its customer service. Mitutoyo make no warranty, express or implied, regarding the quality or performance of this program. Mitutoyo cannot accept liability for any damage arising from the use of this program (including damage, failure, other consequential damage, etc. of hardware, other programs and data), either directly or indirectly.

- Mitutoyo shall not be responsible for any result and related influence by the operation of this program and manual.
- All copyright for this program and manual belongs to Mitutoyo.
- No one shall be allowed to revise part or all of program without permission.
- If this program is copied in complete condition. Elimination or revision of this manual, and the copying, reproduction or assignment of part of this program is strictly prohibited.

**Notice: U-WAVE-TCB/U-WAVE-TMB, U-WAVEPAK-BM**

- This application operates on Android 7.0 or later and iOS 12.0 or later.
- This application can use the Bluetooth function that comes with the device.
  - ※ When using the Bluetooth function, the Android terminal needs the access right of the location information.
- This application and U-WAVE-TCB/U-WAVE-TMB do not guarantee the connection with all Bluetooth apparatuses.
- During Bluetooth communication is always exhausted to the battery of U-WAVE-TCB/U-WAVE-TMB. Please Disconnect Bluetooth communication when not in use.
  - ※ This application has been confirmed to work with Android 7.0 and iOS 12.0.

## Mitutoyo Mobile APPLICATION End-User License Agreement

IMPORTANT – PLEASE READ THIS MITUTOYO MOBILE APPLICATION END USER LICENSE AGREEMENT ("EULA") CAREFULLY BEFORE USING THE APPLICATION SOFTWARE DISTRIBUTED BY MITUTOYO FOR USE ON IOS OR ANDROID OS DEVICES. THIS EULA SHALL CONSTITUTE A LEGAL AGREEMENT BETWEEN YOU/CUSTOMER AND MITUTOYO CORPORATION ("MITUTOYO") FOR THE MITUTOYO APPLICATION SOFTWARE DISTRIBUTED WITH THIS EULA, WHICH APPLICATION SOFTWARE INCLUDES, WITHOUT LIMITATION, PROGRAM AND MAY ALSO INCLUDE ASSOCIATED MEDIA, PROGRAM DISK(S), DONGLES, MANUALS, OTHER PRINTED MATERIALS, AND/OR OTHER "ONLINE" OR ELECTRONIC DOCUMENTATION (COLLECTIVELY, "APPLICATION SOFTWARE"). BY CLICKING ON THE "ACCEPT" BUTTON, DOWNLOADING THE APPLICATION SOFTWARE, INSTALLING THE APPLICATION SOFTWARE ON AND/OR USING A PRODUCT OR PROGRAM CONTAINED IN THE APPLICATION SOFTWARE, YOU ARE DEEMED TO HAVE CONSENTED TO BE BOUND BY THE TERMS OF THIS EULA. IF YOU DO NOT AGREE TO ALL OF THE TERMS AND CONDITIONS OF THIS EULA, DO NOT CLICK ON THE "ACCEPT" BUTTON AND DO NOT OPEN, DOWNLOAD, INSTALL OR USE THE SOFTWARE PRODUCT. THIS APPLICATION SOFTWARE IS LICENSED, NOT SOLD, SUBJECT TO THE TERMS AND CONDITIONS SET FORTH IN THIS EULA. THE GRANT OF LICENSE SET FORTH BELOW WILL BE EFFECTIVE ONLY WHEN YOU AGREE TO ALL TERMS AND CONDITIONS SET FORTH IN THIS EULA.

### 1 License

Mitutoyo grants to you/customer ("Customer") a non-transferable and non-exclusive and limited license to install and use one copy of the APPLICATION SOFTWARE (in object code form only) on a single DEVICE, under the terms and conditions of this EULA. In the event that Customer wishes to use the APPLICATION SOFTWARE on another DEVICE, Customer must obtain another license therefor.

Customer acknowledges and agrees that (a) Mitutoyo, its affiliated and related companies and/or its suppliers are and shall remain the owner of the exclusive right, title and interest in and to the APPLICATION SOFTWARE and (b)

Customer has no right, title or interest of any nature whatsoever in and to the APPLICATION SOFTWARE, except the right to use the APPLICATION SOFTWARE in accordance with and subject to the terms and conditions of this EULA. All rights not expressly granted herein by Mitutoyo are reserved by Mitutoyo for the exclusive benefit and use of Mitutoyo and its affiliated and related companies as Mitutoyo deems appropriate.

### 2 Restrictions

EXCEPT AS EXPRESSLY AUTHORIZED HEREIN, CUSTOMER SHALL NOT PRINT OR COPY, IN WHOLE OR IN PART, THE APPLICATION SOFTWARE; MODIFY THE APPLICATION SOFTWARE; REVERSE COMPILE OR REVERSE ASSEMBLE/ENGINEER ALL OR ANY PORTION OF THE APPLICATION SOFTWARE; OR RENT, LEASE, SUBLICENSE, DISTRIBUTE, SELL, OR CREATE DERIVATIVE WORKS OF THE APPLICATION SOFTWARE.

### 3 Copyright

Copyright in and to the APPLICATION SOFTWARE shall remain exclusively with Mitutoyo, its affiliated and related companies and/or its suppliers. Customer may not remove, modify or alter any copyright, trademark or any other intellectual property legend/notice from any part of the APPLICATION SOFTWARE.

### 4 Limited warranty

In no event does Mitutoyo warrant that the APPLICATION SOFTWARE is error free or that Customer will be able to operate the APPLICATION SOFTWARE without problems or interruptions or that the APPLICATION SOFTWARE will work in combination with any hardware or application APPLICATION SOFTWAREs provided by third parties.

**EXCEPT AS SPECIFIED IN THIS WARRANTY, ALL EXPRESS OR IMPLIED CONDITIONS, REPRESENTATIONS, AND WARRANTIES OF ANY NATURE WHATSOEVER INCLUDING, WITHOUT LIMITATION, ANY IMPLIED WARRANTY OF MERCHANTABILITY, FITNESS FOR A PARTICULAR PURPOSE, NON-INFRINGEMENT OR WARRANTY ARISING FROM A COURSE OF DEALING, USAGE, OR TRADE PRACTICE, ARE HEREBY EXCLUDED TO THE MAXIMUM EXTENT ALLOWED BY APPLICABLE LAW.**

Customer assumes all responsibility for all results arising out of its selection of the APPLICATION SOFTWARE to achieve its intended results.

### 5 Disclaimer

**IN NO EVENT WILL MITUTOYO, ITS AFFILIATED AND RELATED COMPANIES AND SUPPLIERS BE LIABLE FOR ANY LOST REVENUE, PROFIT, OR DATA, OR FOR SPECIAL, DIRECT, INDIRECT, CONSEQUENTIAL, INCIDENTAL, OR PUNITIVE DAMAGES HOWEVER CAUSED AND REGARDLESS OF THE THEORY OF LIABILITY ARISING OUT OF THE USE OF OR INABILITY TO USE OF THE APPLICATION SOFTWARE EVEN IF MITUTOYO, ITS AFFILIATED AND RELATED COMPANIES AND/OR SUPPLIERS HAVE BEEN ADVISED OF THE POSSIBILITY OF SUCH DAMAGES.**

If, notwithstanding the other provisions of this EULA, Mitutoyo, its affiliated and related companies and/or its suppliers are found to be liable to Customer for any damage or loss which arises out of or is in any way connected with use of the APPLICATION SOFTWARE by Customer, in no event shall Mitutoyo's and/or its affiliated and related companies' and suppliers' liability to Customer, whether in contract, tort (including negligence), or otherwise, exceed the price paid by Customer for the APPLICATION SOFTWARE only.

The foregoing limitations shall apply even if the above - stated warranty fails of its essential purpose.

**BECAUSE SOME COUNTRIES, STATES OR JURISDICTIONS DO NOT ALLOW THE EXCLUSION OR THE LIMITATION OF LIABILITY FOR CONSEQUENTIAL OR INCIDENTAL DAMAGES, IN SUCH COUNTRIES, STATES OR JURISDICTIONS, MITUTOYO'S, ITS AFFILIATED AND RELATED COMPANIES' AND SUPPLIERS' LIABILITY SHALL BE LIMITED TO THE EXTENT PERMITTED BY LAW.**

## **6 Termination**

The license of Customer under this EULA is effective until terminated. Customer may terminate this EULA at any time by destroying all copies of the APPLICATION SOFTWARE including all media and documentation. This EULA will terminate immediately without notice from Mitutoyo if Customer fails to comply with any provision of this EULA. Upon termination, Customer must destroy all copies of APPLICATION SOFTWARE including all media and documentation.

## **7 Export control**

The APPLICATION SOFTWARE is subject to Japanese export control laws as well as any other applicable export or import control laws and regulations in other countries. Customer agrees to comply strictly with all such applicable regulations and acknowledges that it has the responsibility to obtain licenses to export, re - export, or import the APPLICATION SOFTWARE.

## **8 Miscellaneous**

This EULA shall be governed by and construed in accordance with the laws of Japan, without giving effect to the principles of conflict of law. Customer agrees to submit to the exclusive jurisdiction of the district courts in Tokyo, Japan with respect to any dispute, controversy or claim arising out of or relating to this EULA and the parties respective rights and obligations hereunder. This EULA shall not be governed by the United Nations Convention on Contracts for the International Sale of Goods, the application which is expressly excluded.

If any portion hereof is found to be void or unenforceable, the remaining provisions of this EULA shall remain in full force and effect.

This EULA constitutes the entire agreement between Customer and Mitutoyo with respect to the subject matter hereof.

Customer shall indemnify, defend and hold harmless Mitutoyo, its affiliated and related companies and its suppliers from and against any and all claims and liability of any nature whatsoever arising out of or in connection with Customer's breach of this EULA.

**Table of Contents**

<b>1. Installation.....</b>	<b>7</b>
<b>2. Starting "U-WAVEPAK-BM" .....</b>	<b>7</b>
<b>3. Screen Description .....</b>	<b>9</b>
<b>4. How To .....</b>	<b>10</b>
4.1. How to Register U-WAVE-TCB/U-WAVE-TMB .....	10
4.2. Measurement data acquisition method .....	13
4.3. Setting Device Information (Device Name, Tolerance Determination) .....	17
4.4. Graph Display .....	22
4.5. histogram display .....	25
4.6. File List .....	28
4.7. Other Features .....	30
4.8. How to Disconnect and Unregister Devices .....	31
<b>5. How to pair directly with the OS .....</b>	<b>32</b>
<b>6. troubleshooting .....</b>	<b>32</b>

**1. Installation**

Download "U-WAVEPAK-BM" from the application store (Google Store, App Store) and install it.

**2. Starting "U-WAVEPAK-BM"**

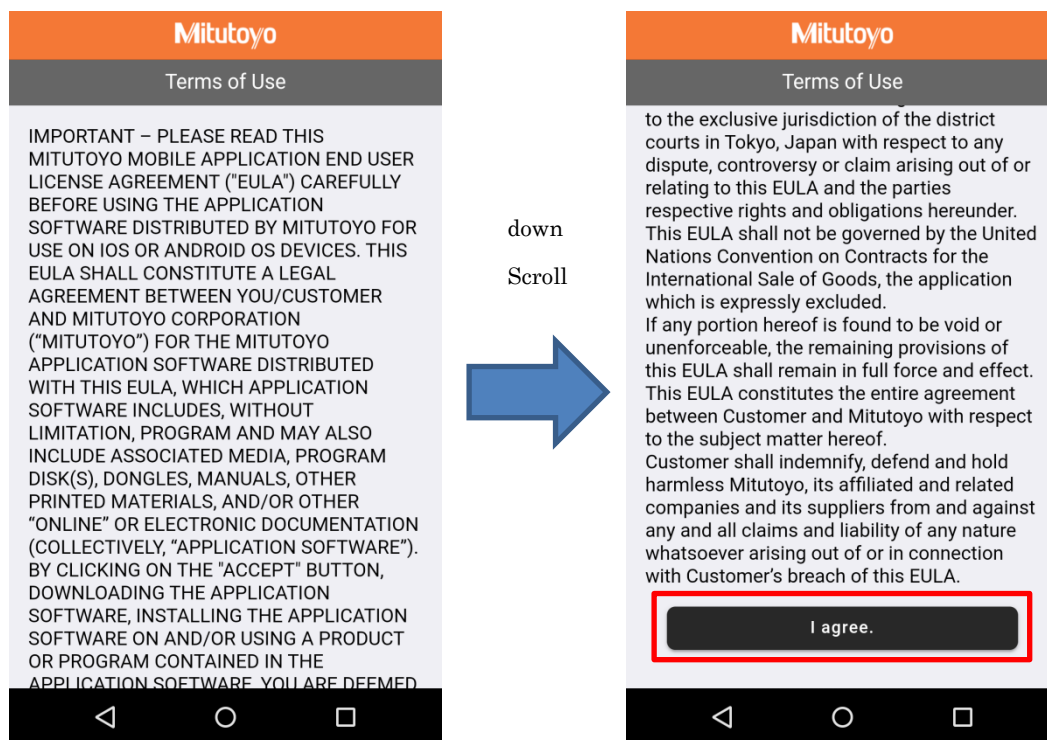
① Tap 'U-WAVEPAK-BM' to start the application.



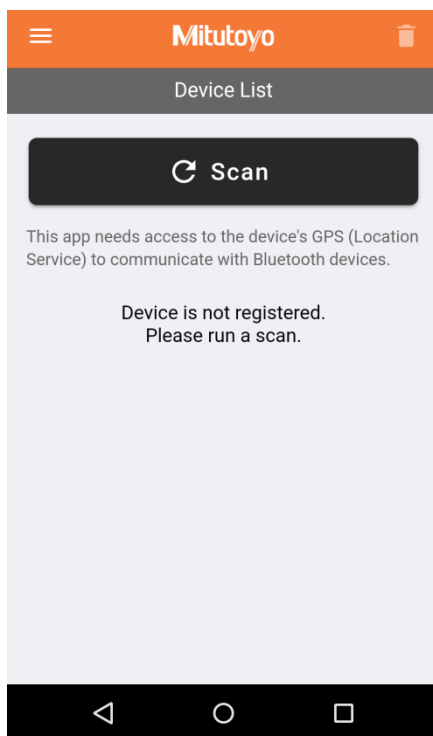
② Enable access to location information.

\*According to Google's specifications, the Android OS requires permission to access location information during Bluetooth communication.

③ After checking the terms of use, please agree by clicking the consent button at the bottom of the screen.



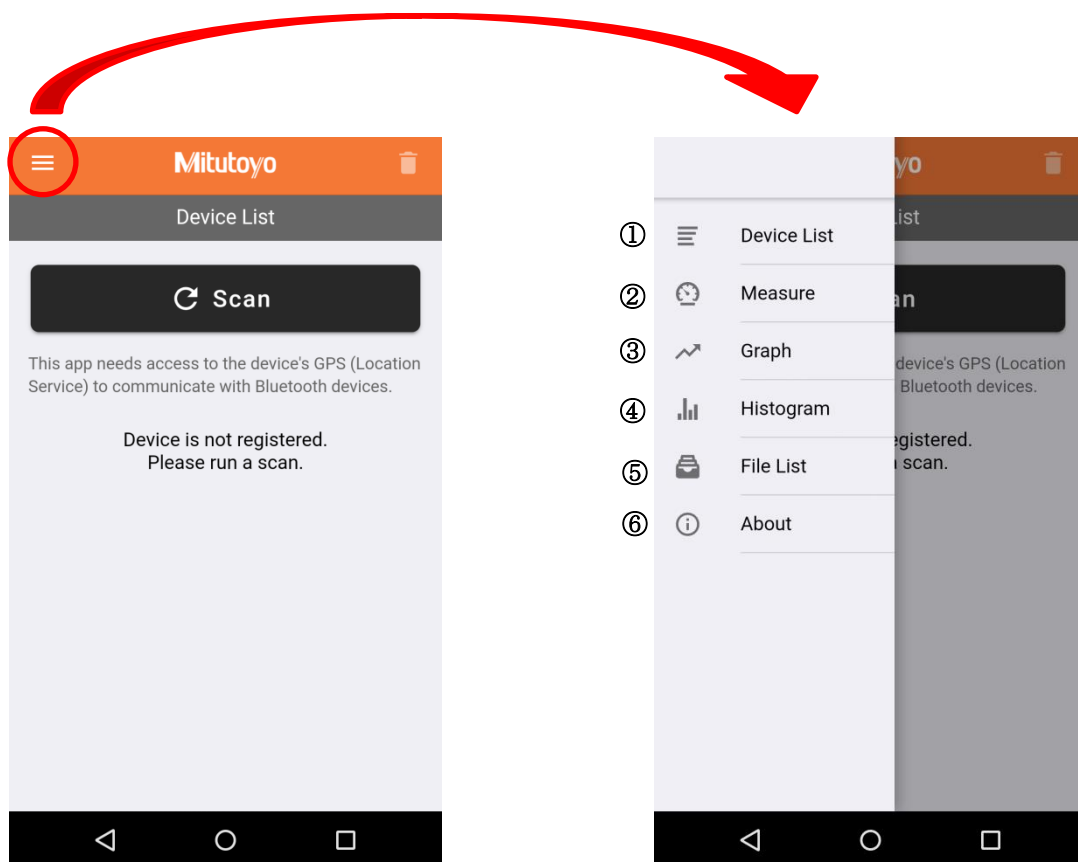
④ The activation is complete when the following screen appears.





### 3. Screen Description

Tap the upper left of the start-up screen to select items on the display screen.



#### ① Device List

You can register and delete U-WAVE-TCB/U-WAVE-TMB, confirm connection, and set devices.

#### ② Measure

You can display received measurements, request data, and reset data.

#### ③ Graph

The measurement data log can be displayed graphically.

#### ④ Histogram

The measurement data log can be displayed as a histogram.

#### ⑤ File List

You can display the measurement data log file. You can delete and share files.

#### ⑥ About

You can check the version of the application and change the decimal point display.

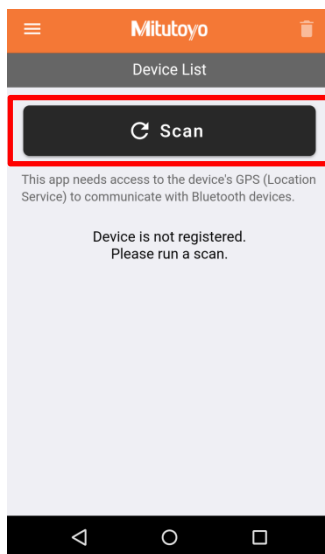
## 4. How To

### 4.1. How to Register U-WAVE-TCB/U-WAVE-TMB

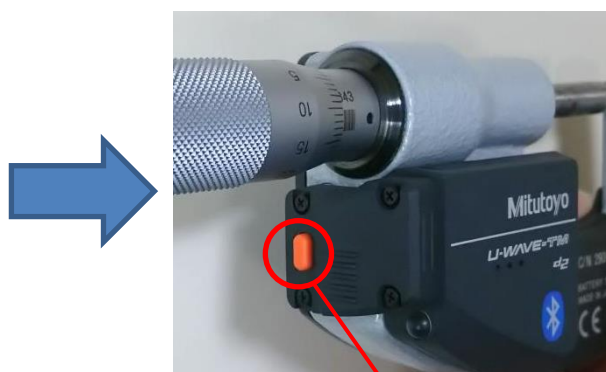
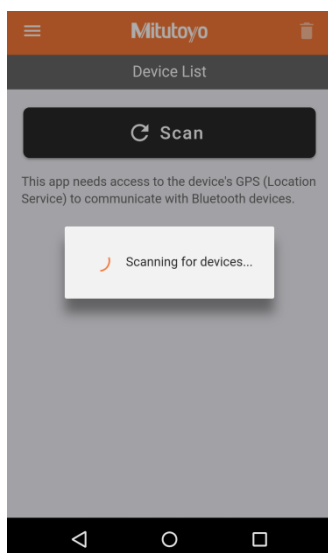
This section explains how to connect U-WAVEPAK-BM and U-WAVE-TCB/U-WAVE-TMB via Bluetooth.

You can register up to 3 of U-WAVE-TCB/U-WAVE-TMB.

- ① Turn on the power of the measuring instrument to which U-WAVE-TCB/U-WAVE-TMB.
- ② Change the display of the application to "Device List" and tap "Scan".



- ③ When the following screen appears, press the DATA button (orange) of U-WAVE-TCB/U-WAVE-TMB.



Press the button

#### **Tips**

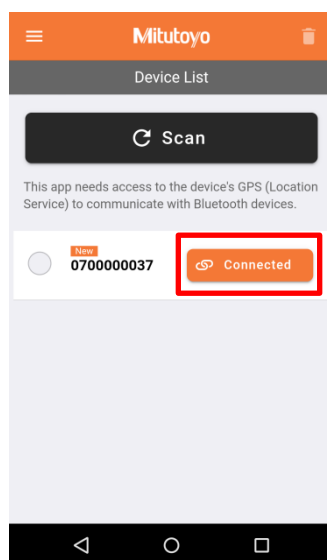
- If you press the DATA button of U-WAVE-TCB/U-WAVE-TMB, the LED will flash orange.
- Scanning continues for 15 seconds. Shows all U-WAVEs detected during the scan.

- ④ Make sure the device ID is displayed on the application screen.

Tap "Save" of the device ID you want to register, and when "Connecting" is displayed, press the DATA button of U-WAVE-TCB/U-WAVE-TMB again.



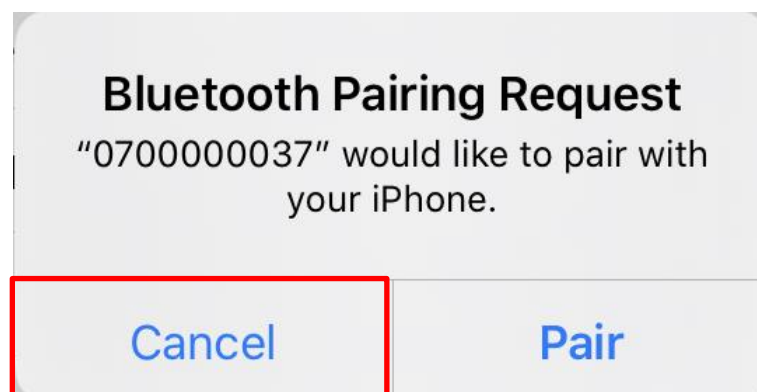
- ⑤ When the display of the application turns orange "Connected", the connection is completed.



\*The U-WAVE-TCB/U-WAVE-TMB LED lights green when the connection is complete. Also, the buzzer sounds when the type is buzzer.

**Caution**

- If you connect directly to the OS of your smartphone or tablet, the device ID does not appear in the application. Disconnect from the OS before registering.
- In case of iOS, the following dialog may be displayed according to the specification of Apple.  
Select "Return" to use the application. If you select "pairing", please deregister the device from the OS setting screen and register again with the application.



#### 4.2. Measurement data acquisition method

This section explains how to send and view measurement data.

Please check the tips for changing the decimal point display.

##### ① Method for transmitting measurement data

When the DATA button (orange) is pressed, the U-WAVE-TCB/U-WAVE-TMB transmits the measured value displayed on the measuring instrument.



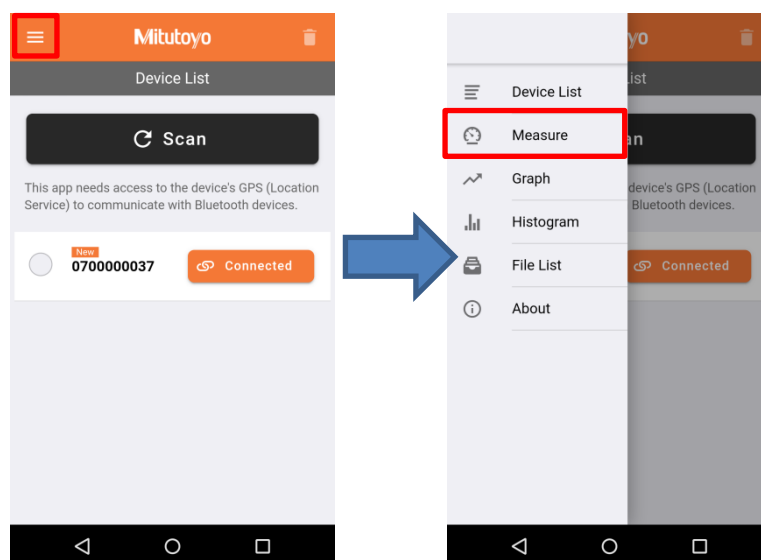
If the transmission is successful, the LED flashes green. The buzzer sounds twice for the buzzer type.

If transmission fails, the LED flashes red. The buzzer sounds once for the buzzer type.

##### ② Reading method of measurement data

The measurement data sent from U-WAVE-TCB/U-WAVE-TMB can be viewed on the "Measure" screen.

Tap the upper left of the application screen and tap "Measure".



The measurement data is displayed on the following screen and is displayed when the measurement data is received.



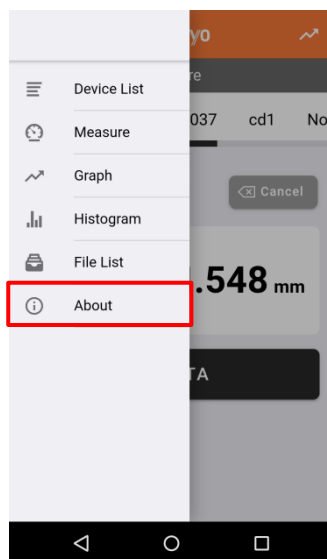
When multiple U-WAVE-TCB/U-WAVE-TMB are connected to the app, you can check the measurement values of all devices on the "All" screen. If no device is registered, "No connected device" is displayed.



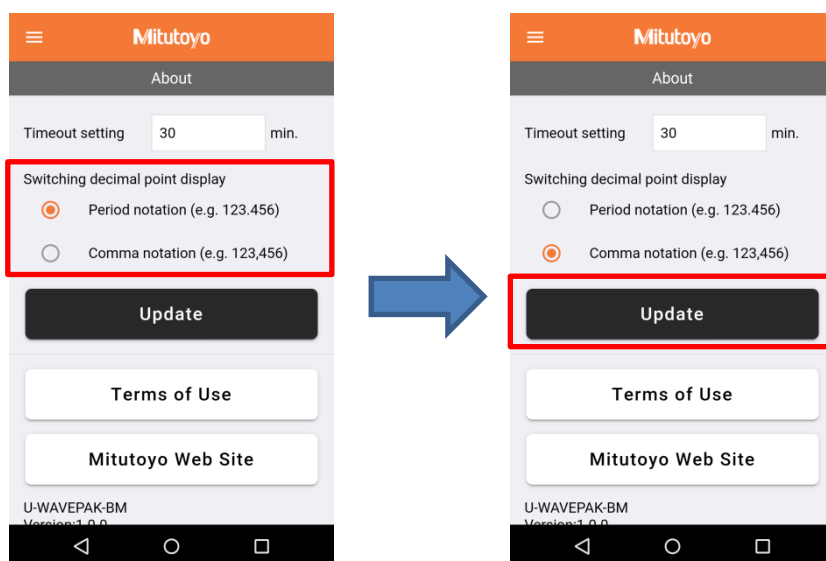
**Tips**

The display of the decimal point can be changed as follows.

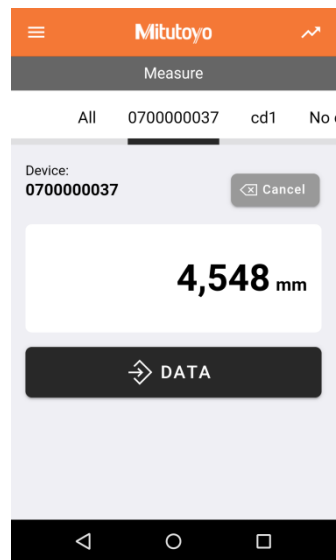
- ① Tap the upper left of the application screen and select "About".



- ② Select the format of decimal point display in "Switching decimal point display", and tap "Update".



③ The display of the decimal point will be changed as shown below.



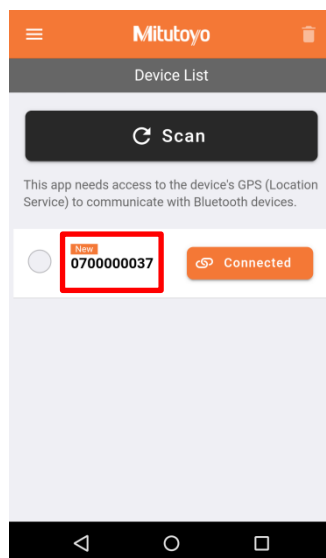


### 4.3. Setting Device Information (Device Name, Tolerance Determination)

You can set the device name, tolerance judgment and memo for the device registered in the application.

\*It is set only by the application. It is not set to the transmitter.

- ① Tap the upper left of the screen and select "Device List".
- ② Tap the device ID to set the device information.



- ③ The following setting screen appears.

**Device ID**  
Display the device ID.

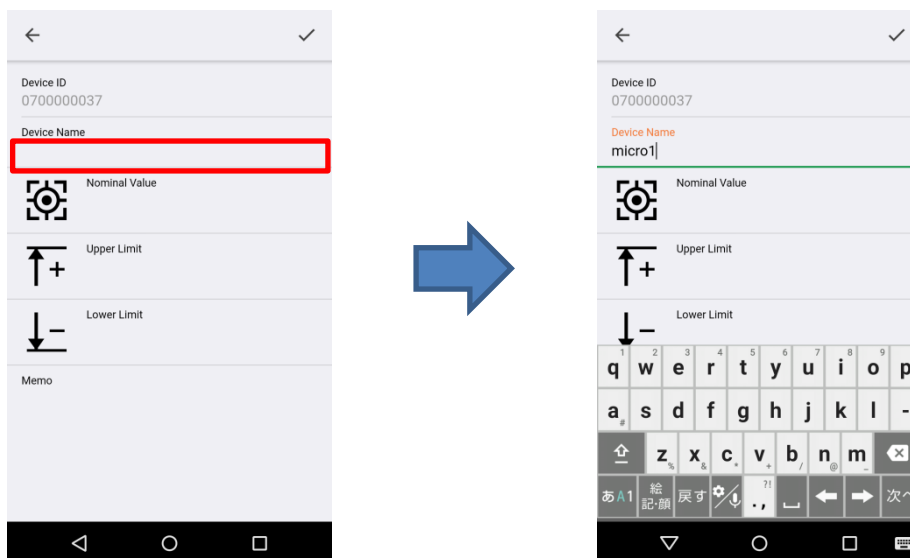
**Nominal Value**  
The nominal value can be set.

**Memo**  
Memo can be set.

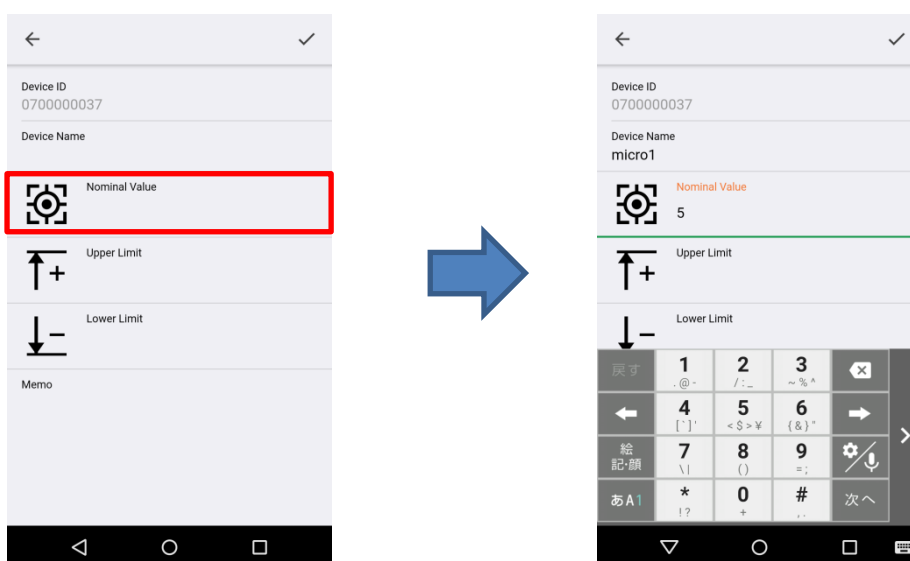
**Device Name**  
The device name can be set.  
Up to 20 characters  
Half-width alphanumeric characters

**Upper Limit**  
**Lower Limit**  
The tolerances can be set.

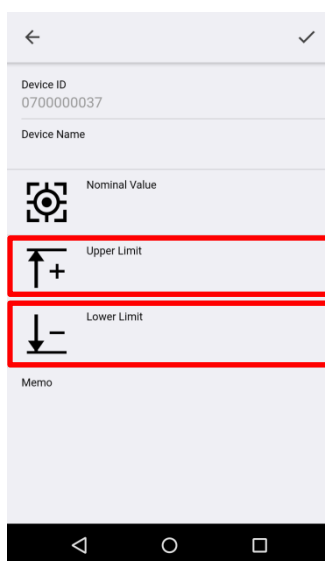
- ④ Tap the blank of "Device Name" to enter the device name setting.  
Please enter only Half-width alphanumeric characters within 20 characters.



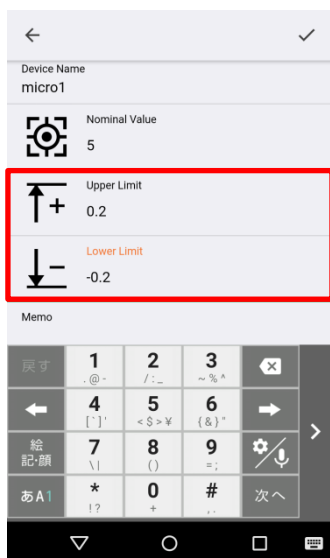
- ⑤ Tap the blank field of "Nominal Value" to enter the nominal value setting.



⑥ Tap the blanks "Upper Limit" and "Lower Limit" to enter the tolerance setting.



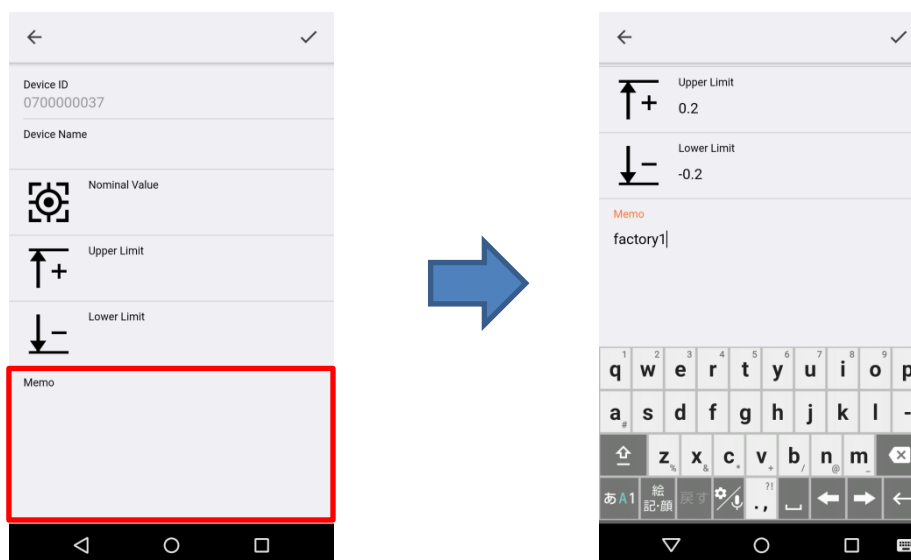
Setting  $\pm 0.2$



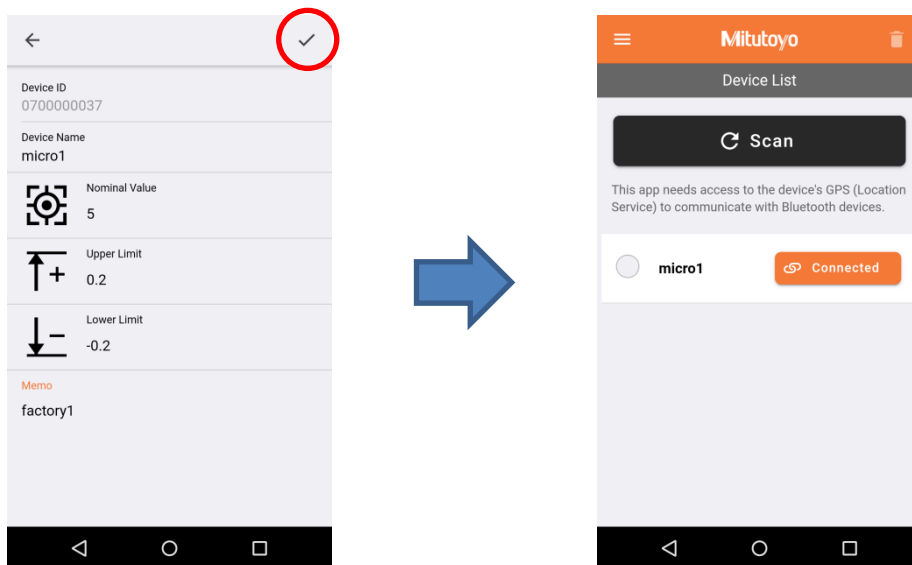
Setting  $+ 0.3/+ 0.1$



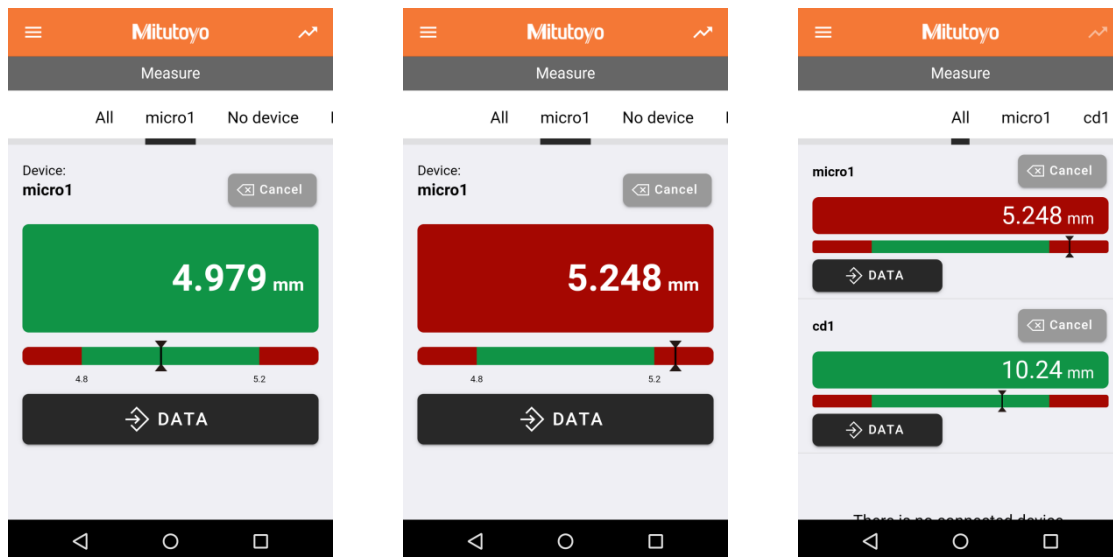
- ⑦ Tap the blank space of "Memo" to enter the memo setting.  
You can enter up to 256 Full width characters. (No restricted characters)



⑧ After entering the setting, tap "✓" in the upper right of the screen to complete the setting.



The screen displayed in "Measure" changes when tolerance settings are made. They are displayed in green when they are within the tolerance range and in red when they are outside the tolerance range. If you have registered multiple entries, you can check them all on the "All" screen.

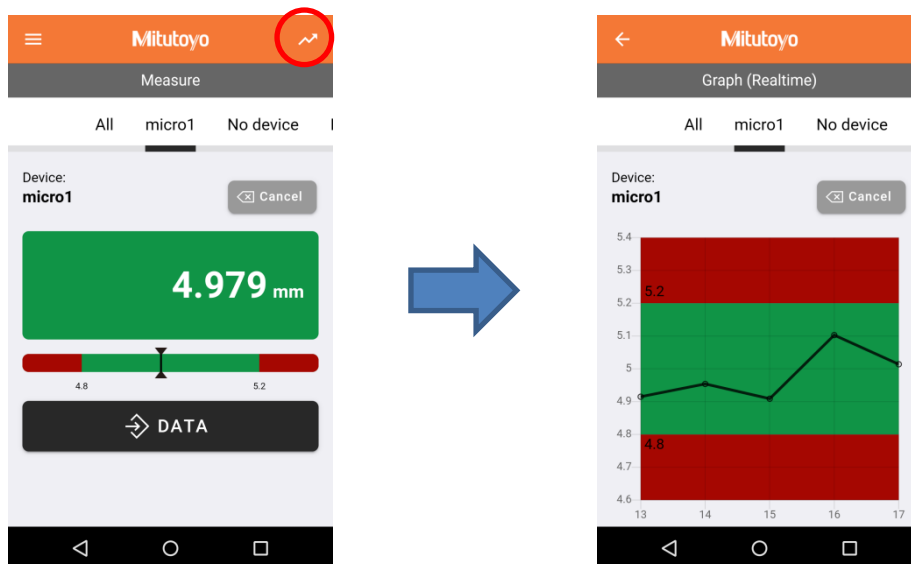


#### 4.4. Graph Display

There are two types of graph display: "real-time display" and "Graph display of measurement data log".

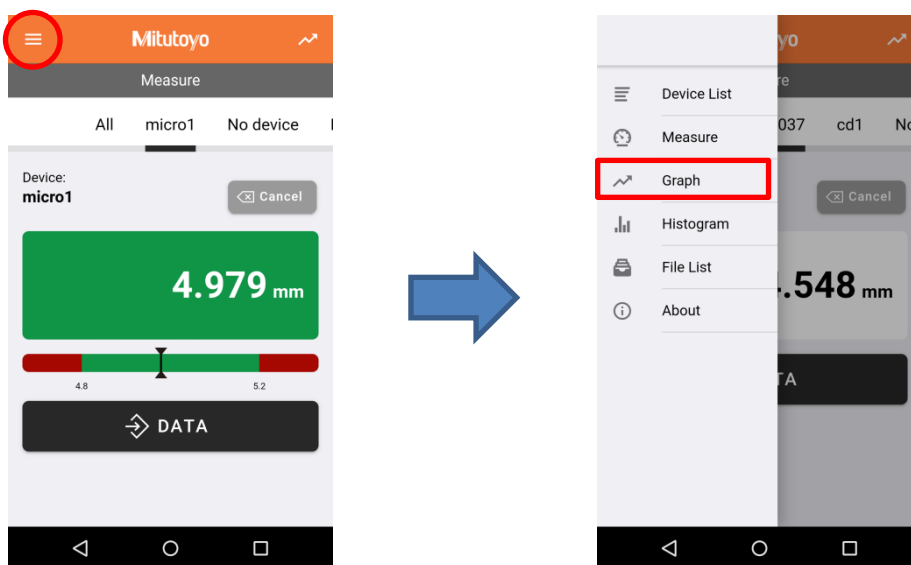
##### ■ Real-time display

Tap the upper right on the "Measure" screen. A plot is added when measurement data is received.

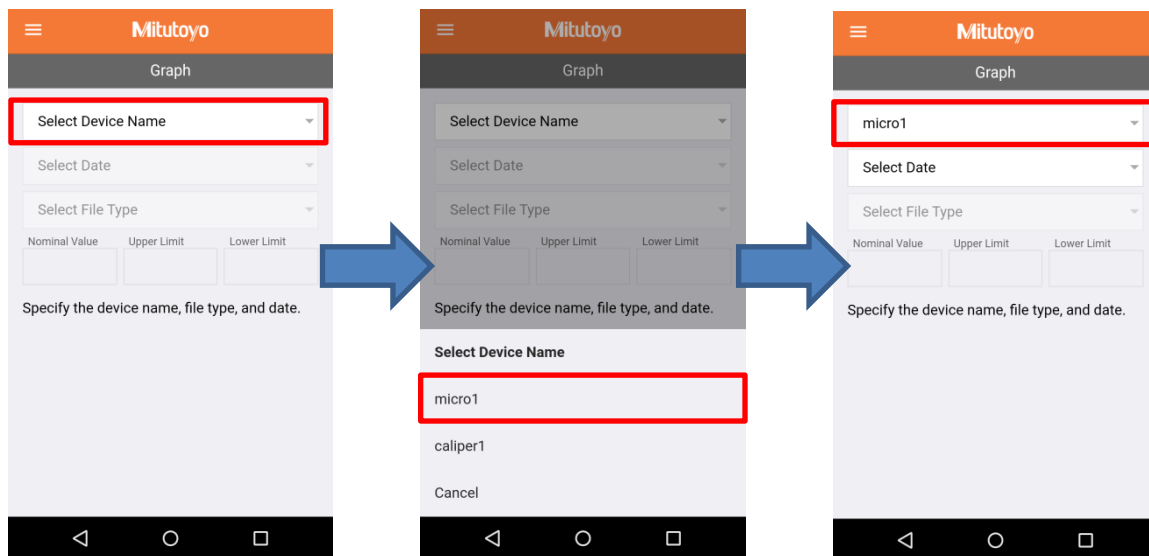


##### ■ Graph display of measurement data log

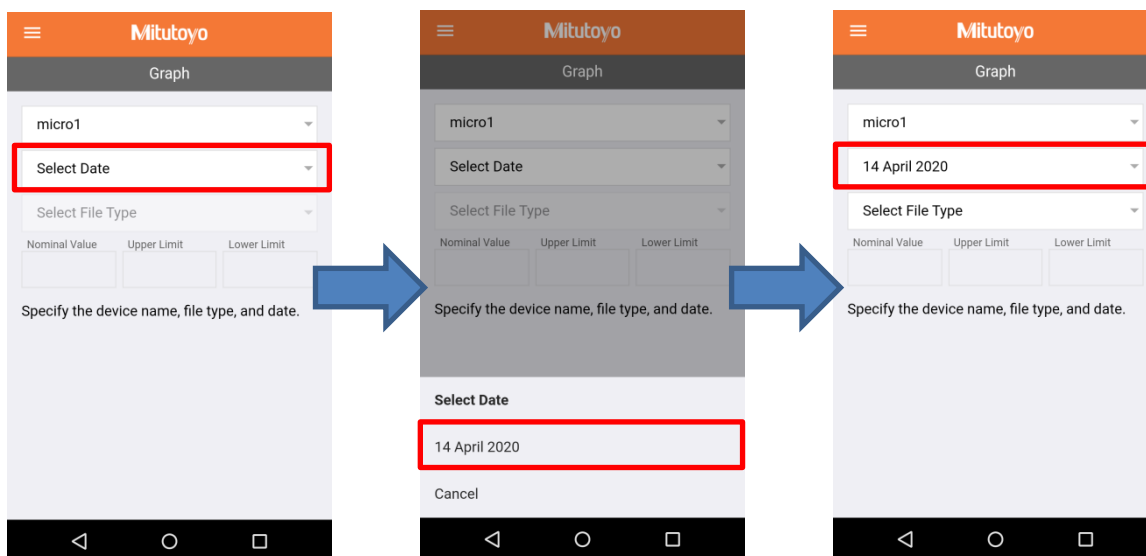
① Tap the upper left of the display screen and tap "Graph".



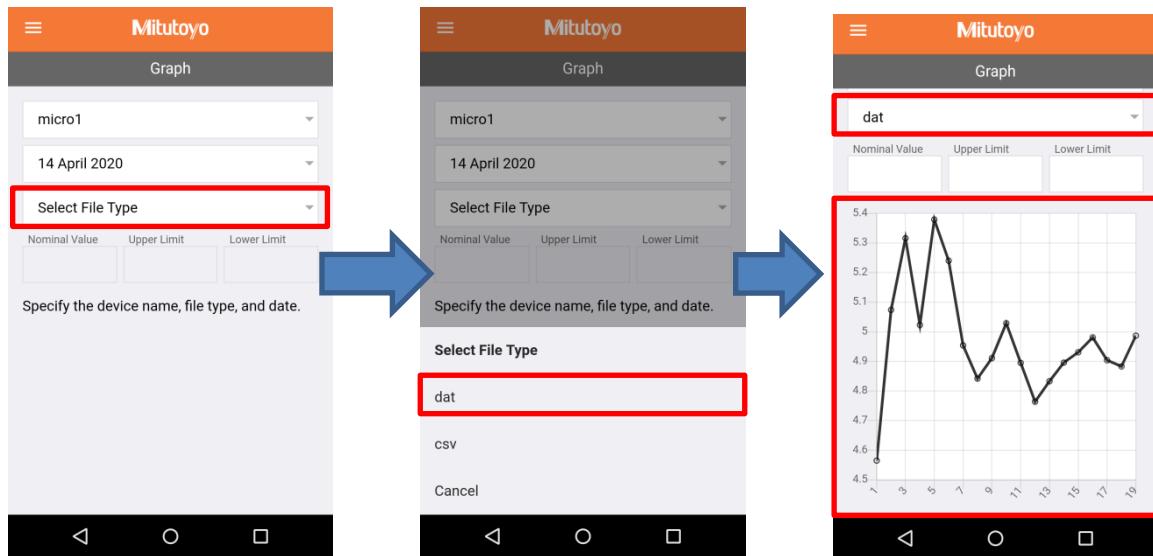
② When the "Graph" screen appears, tap "Select Device Name" and select the device you want to graph.



③ Tap "Select Date" and select the date of the measurement data log you want to graph.



- ④ Tap "Select File Type" to select a file. Select a file to display the graph.



Enter "Nominal Value", "Upper Limit", or "Lower Limit" and the tolerance range will be displayed on the graph.



### Tips

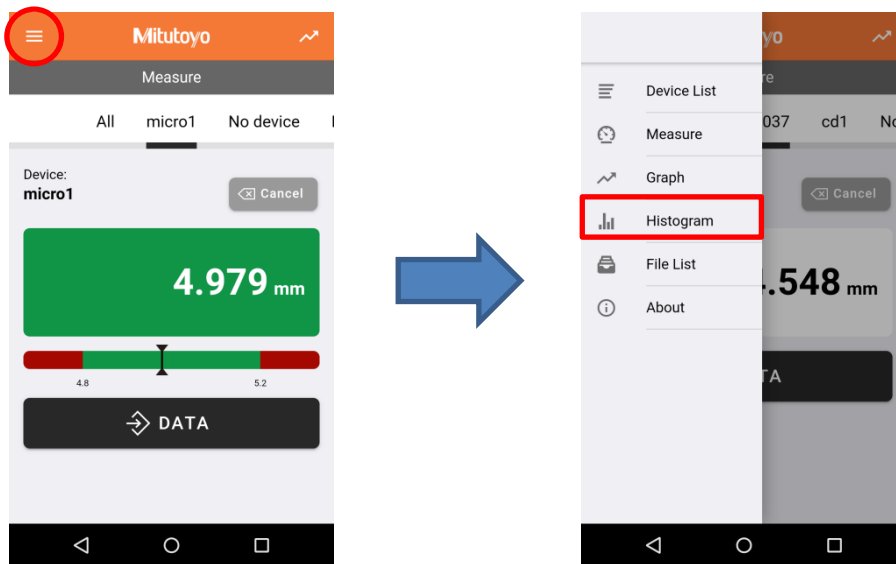
- You can change the scale of the graph by pinching in and pinching out.



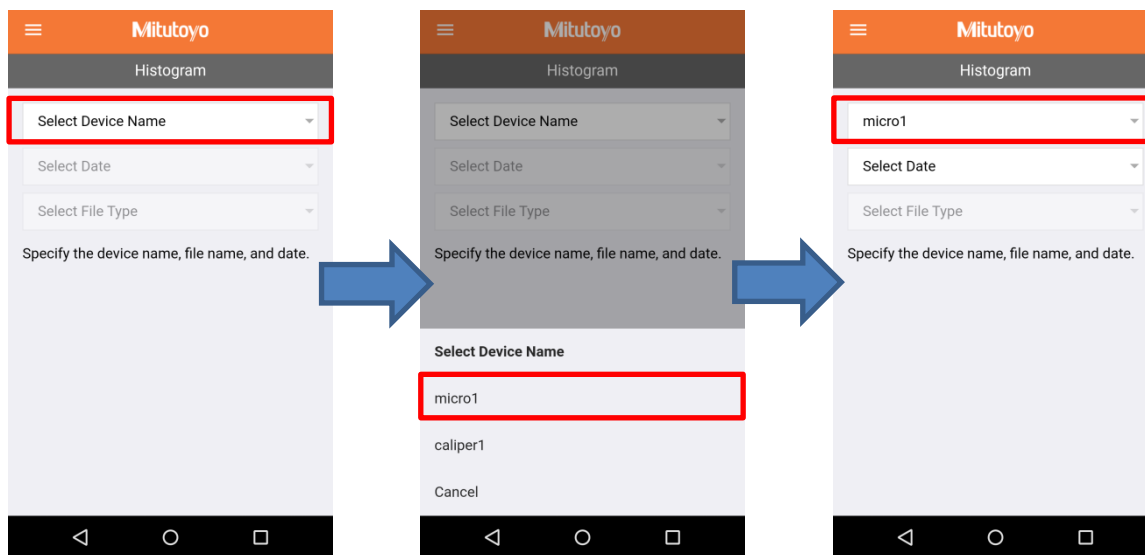
### 4.5. Histogram display

The acquired measurement data log can be displayed in a histogram.

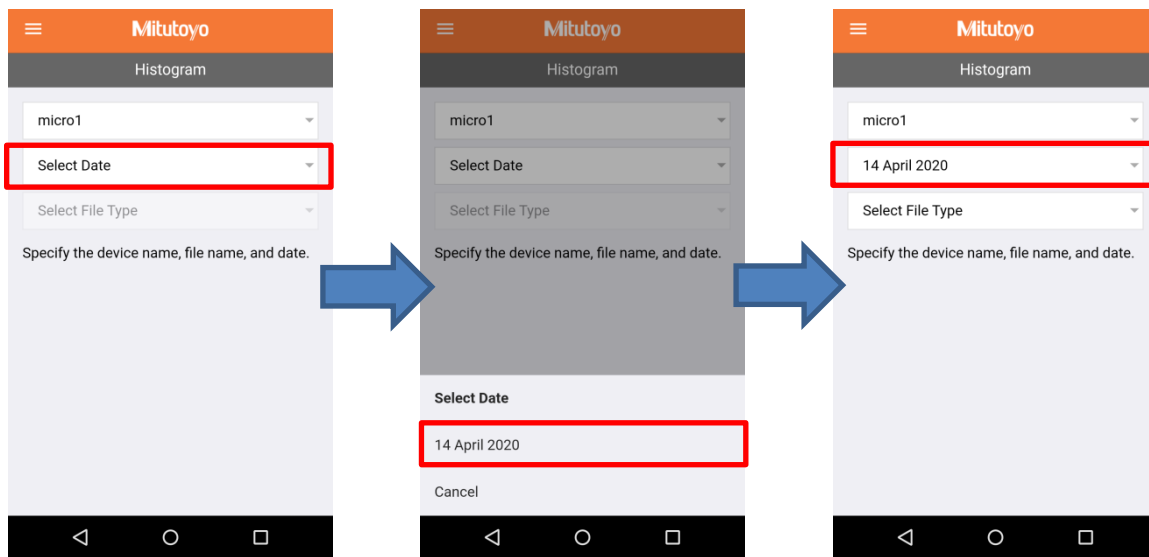
- ① Tap the upper left of the display screen and tap "Histogram".



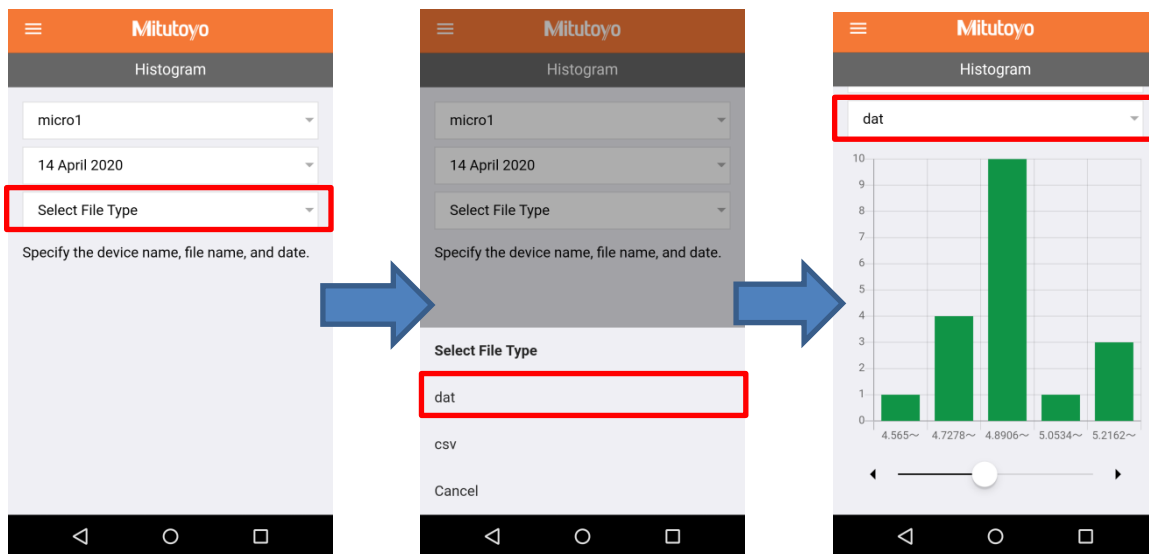
- ② When the "Histogram" screen appears, tap "Select Device Name" and select the device for which you want to display the histogram.



③ Tap "Select Date" and select the date of the measurement data log for which you want to display the histogram.

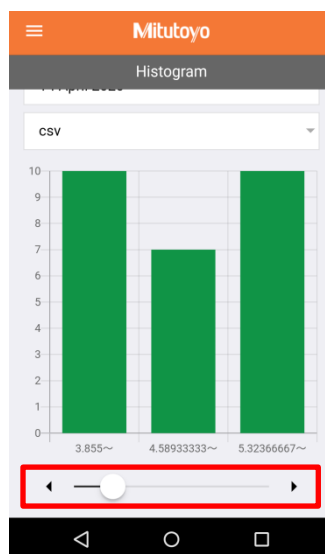
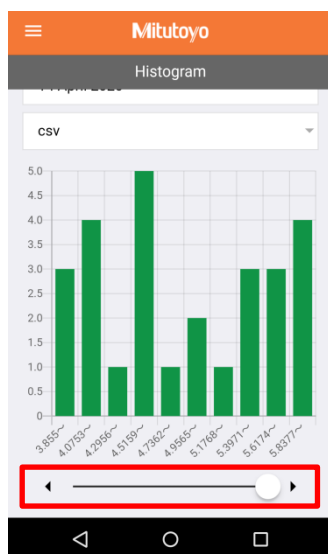


④ Tap "Select File Type" to select a file. Select to display the histogram.



**Tips**

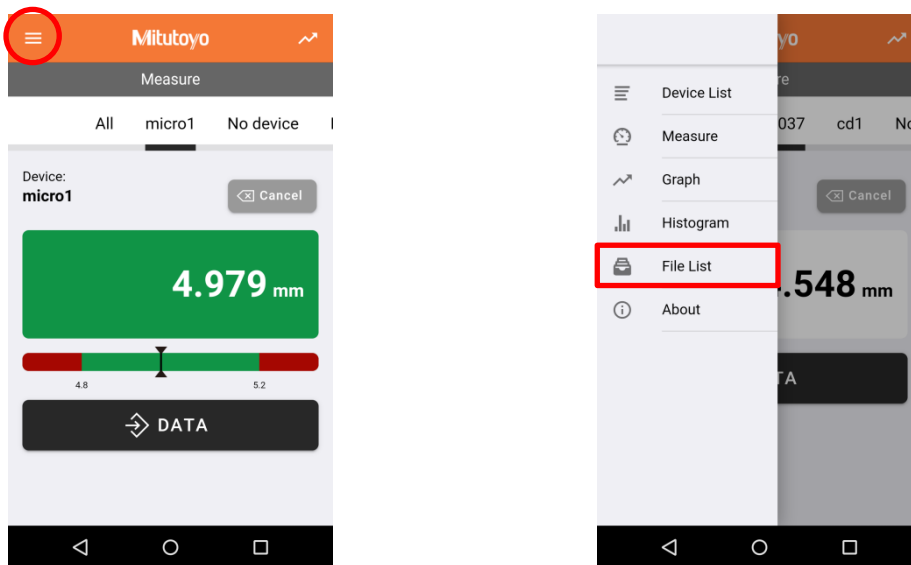
- You can change the bins (X Axis) in the bar at the bottom of the histogram.
- The histogram bins can be displayed in up to 10 segments.



### 4.6. File List

You can check the log file of the data measured by the application. You can also share and delete files.

① Tap the upper left of the display screen and select "File List".



② A file list appears. Each part is described below.

**Search**

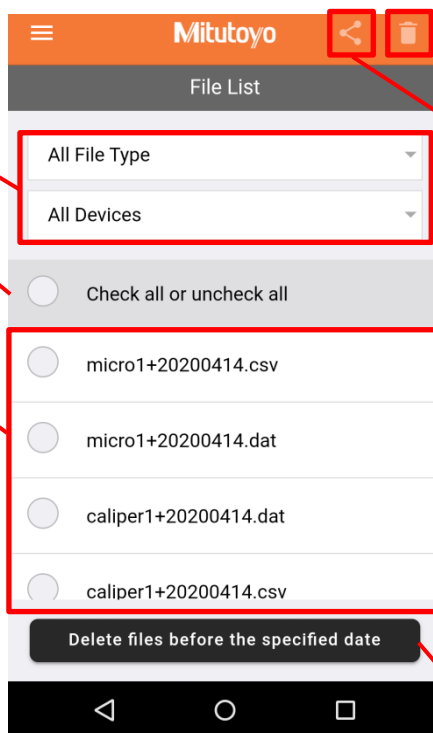
You can select a file format and device name to narrow down the log file.

**Select All**

You can select all log files.

**File List**

The log file is displayed.



**Delete File**

You can delete the selected log file.

**Sharing files**

You can share the selected log file.

**Deleting files (Date)**

You can delete data that is earlier than the date you enter.

**Tips**

-The measurement data log file is created in "Date + Device Name". Changing the device name creates a new file.

-The date is in the format "YYYYMMDD".

-The "csv" file is saved in the form of double quotes for strings and commas for delimiters.

File format:

Line 1 (Header):

#, "[Device ID]", "[Device Name]", "[Nominal Value]", "[Lower Limit]", "[Upper Limit]", "[memo]"

Lines after (Data):

[measured value] , [tolerance judgment result] , [YYYY/MM/DD hh: mm]

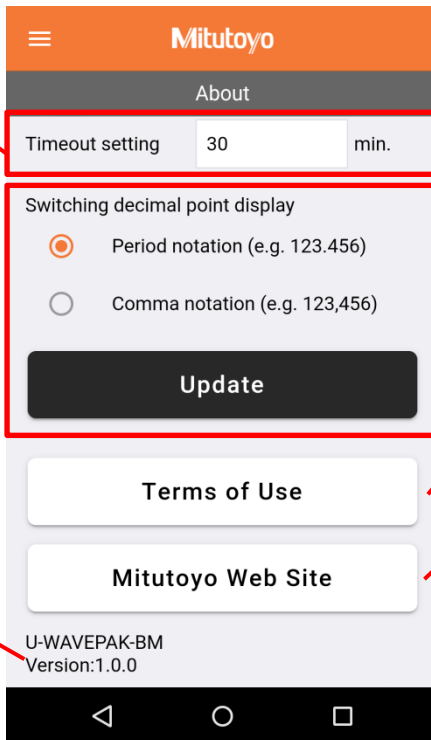
\*When the decimal point of the measurement value is [,], it is a double quotation enclosure.

**4.7. Other Features**

Tap the upper left of the display screen and select "About" to display the following screen. The components are described below.

**Recall reception time setting**

You can set the time for automatic reconnection when the transmitter is disconnected. If it times out, connect manually.



**Toggle Decimal**

You can change the decimal point display.

**Terms of Use**

You can see the terms of use.

**Mitutoyo website**

Mitutoyo's website opens.

**Version information**

The version of this application is displayed.

#### 4.8. How to Disconnect and Unregister Devices

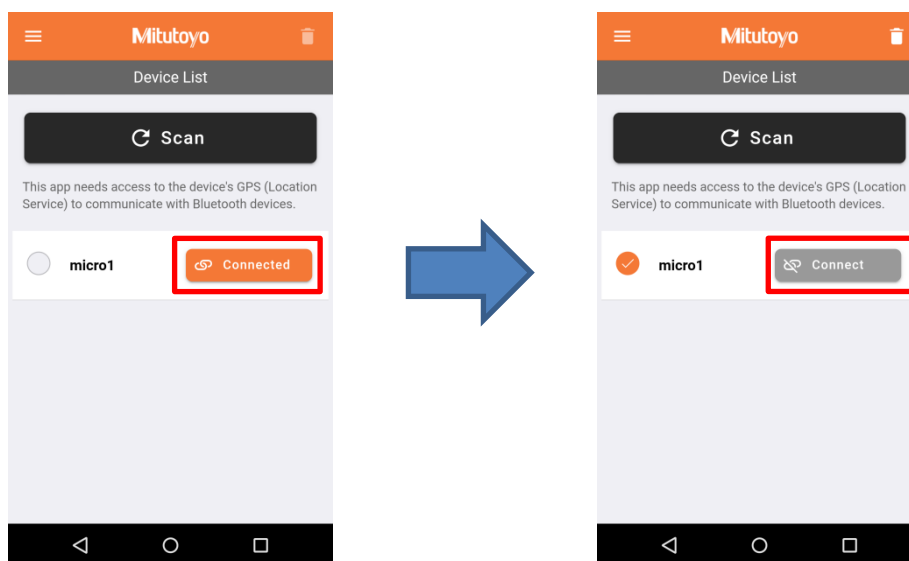
You can disconnect or unregister the device registered in the application on the "Device List" screen.

\*If you do not disconnect the Bluetooth connection, the battery will always be exhausted. When not in use, disconnect the communication before storing.

##### ■ Method of disconnecting communication

Tap "Connected" (orange) to disconnect.

To reconnect, tap "Connect" and press the DATA button (orange) on the transmitter.



##### ■ How to unregister

Check the device you want to unregister and tap the upper right of the display screen.

Press "OK" on the confirmation screen to cancel the device registration.



## **5. How to pair directly with the OS**

U-WAVE-TCB/U-WAVE-TMB can be directly connected to the OS without using this application.  
It is recognized as keyboard input when connected to the OS.

- ① On the Bluetooth setting screen of the receiving terminal, make the Bluetooth terminal searchable.
- ② Press the DATA button on the transmitter.
- ③ When "U-WAVE" appears, tap to connect.

## **6. Troubleshooting**

■The U-WAVE-TCB/U-WAVE-TMB LED lights green, but no measurement data is displayed.

Cause : Connected to another terminal  
Solution : - Disconnect from other Bluetooth receivers.  
-Turn off the other Bluetooth receiver.

■When registering the application, the LED of U-WAVE-TCB/U-WAVE-TMB lights up in red, and you cannot "Scan".

Cause : The instrument is not powered on.  
Solution : Turn on the power of the instrument.

■No measurements are displayed in the app.

Cause : The receiving terminal is far from the transmitter, or there is an obstruction.  
Solution : -Shorten the distance between the receiving terminal and the transmitter.  
-Remove obstacles

※ If troubleshooting cannot solve the problem, refer to the user's manual of the U-WAVE unit.



## Europe

### Mitutoyo Europe GmbH

Borsigstrasse 8-10, 41469 Neuss, GERMANY  
TEL: 49(0)2137 102-0 FAX: 49(0)2137 102-351

### Mitutoyo CTL Germany GmbH

Von-Gunzert-Strasse 17, 78727 Oberndorf, GERMANY  
TEL: 49(0)7423 8776-0 FAX: 49(0)7423 8776-99

### KOMEG Industrielle Messtechnik GmbH

Zum Wasserwerk 3, 66333 Völklingen, GERMANY  
TEL: 49(0)6898 91110 FAX: 49(0)6898 9111100

## Germany

### Mitutoyo Deutschland GmbH

Borsigstrasse 8-10, 41469 Neuss, GERMANY  
TEL: 49(0)2137 102-0 FAX: 49(0)2137 86 85

### M3 Solution Center Hamburg

Tempowerkring 9 im HIT-Technologiepark 21079 Hamburg,  
GERMANY  
TEL: 49(0)40 791894-0 FAX: 49(0)40 791894-50

### M3 Solution Center Berlin

Carl-Scheele-Straße 16, 12489 Berlin, GERMANY  
TEL: 49(0)30 2611 267

### M3 Solution Center Eisenach

Heinrich-Ehrhardt-Platz 1, 99817 Eisenach, GERMANY  
TEL: 49(0)3691 88909-0 FAX: 49(0)3691 88909-9

### M3 Solution Center Ingolstadt

Marie-Curie-Strasse 1a, 85055 Ingolstadt, GERMANY  
TEL: 49(0)841 954920 FAX: 49(0)841 9549250

### M3 Solution Center Leonberg

Steinbeisstrasse 2, 71229 Leonberg, GERMANY  
TEL: 49(0)7152 6080-0 FAX: 49(0)7152 608060

### Mitutoyo-Messgeräte Leonberg GmbH

Heidenheimer Strasse 14, 71229 Leonberg, GERMANY  
TEL: 49(0)7152 9237-0 FAX: 49(0)7152 9237-29

## U.K.

### Mitutoyo (UK) Ltd.

Joule Road, West Point Business Park, Andover, Hampshire  
SP10 3UX, UNITED KINGDOM

TEL: 44(0)1264 353 123 FAX: 44(0)1264 354883

### M3 Solution Center Coventry

Unit6, Banner Park, Wickmans Drive, Coventry,  
Warwickshire CV4 9XA, UNITED KINGDOM

TEL: 44(0)2476 426300 FAX: 44(0)2476 426339

### M3 Solution Center Halifax

Lowfields Business Park, Navigation Close, Elland, West  
Yorkshire HX5 9HB, UNITED KINGDOM

TEL: 44(0)1422 375566 FAX: 44(0)1422 328025

### M3 Solution Center East Kilbride

The Baird Building, Rankine Avenue, Scottish Enterprise  
Technology Park, East Killbride G75 0QF, UNITED  
KINGDOM

TEL: 44(0)1355 581170 FAX: 44(0)1355 581171

## France

### Mitutoyo France

Paris Nord 2-123 rue de la Belle Etoile, BP 59267 ROISSY EN  
FRANCE 95957 ROISSY CDG CEDEX, FRANCE  
TEL: 33(0)149 38 35 00

### M3 Solution Center LYON

Parc Mail 523, cours du 3éme millénaire, 69791 Saint-Priest,  
FRANCE

TEL: 33(0)149 38 35 70

### M3 Solution Center STRASBOURG

Parc de la porte Sud, Rue du pont du péage, 67118  
Geispolsheim, FRANCE

TEL: 33(0)149 38 35 80

### M3 Solution Center CLUSES

Espace Scionzier 480 Avenue des Lacs, 74950 Scionzier,  
FRANCE

TEL: 33(0)1 49 38 35 90

### M3 Solution Center TOULOUSE

Aeroparc Saint Martin Cellule B08  
ZAC de Saint Martin du Touch 12 rue de Caulet  
31300 Toulouse, FRANCE

TEL: 33(0)1 49 38 42 90

### M3 Solution Center RENNES

ZAC Mivoie

Le Vallon

35230 Noyal-Châtillon sur Seiche, FRANCE

TEL: 33(0)1 49 38 42 10

## Italy

### MITUTOYO ITALIANA S.r.l.

Corso Europa, 7 - 20020 Lainate (MI), ITALY  
TEL: 39 02 935781 FAX: 39 02 9373290 • 93578255

### M3 Solution Center BOLOGNA

Via dei Carpini1/A - 40011 Anzola Emilia (BO), ITALY  
TEL: 39 02 93578215 FAX: 39 02 93578255

### M3 Solution Center CHIETI

Contrada Santa Calcagna - 66020 Rocca S. Giovanni (CH),  
ITALY

TEL: 39 02 93578280 FAX: 39 02 93578255

### M3 Solution Center PADOVA

Via G. Galilei 21/F - 35035 Mestrino (PD), ITALY  
TEL: 39 02 93578268 FAX: 39 02 93578255

## Belgium / Netherlands

### Mitutoyo BeNeLux

### Mitutoyo Belgium N.V.

Hogenakkerhoekstraat 8, 9150 Kruibeke, BELGIUM  
TEL: 32(0)3-2540444 FAX: 32 (0)3-2540445

### Mitutoyo Nederland B.V.

Wiltonstraat 25, 3905 KW Veenendaal,

# SERVICE NETWORK

As of Jan 2019

THE NETHERLANDS  
TEL: 31(0)318-534911

Strada Ionescu Crum Nr.1, Brasov Business Park Turnul 1,  
Mezanin, 500446 Brasov-Judetul Brasov, ROMANIA  
TEL/FAX: 40(0)371020017

## Sweden

**Mitutoyo Scandinavia AB**  
Släntvägen 6, 194 61 Upplands Väsby, SWEDEN  
TEL: 46(0)8 594 109 50 FAX: 46(0)8 590 924 10

**M3 Solution Center Alingsås**  
Ängsvaktaregatan 3A, 441 38 Alingsås, SWEDEN  
TEL: 46(0)8 594 109 50 FAX: 46(0)322 63 31 62

**M3 Solution Center Värnamo**  
Storgatsbacken 1, 331 30 Värnamo, SWEDEN  
TEL: 46(0)8 594 109 50 FAX: 46(0)370 463 34

## Switzerland

**Mitutoyo (Schweiz) AG**  
Steinackerstrasse 35, 8902 Urdorf, SWITZERLAND  
TEL: 41(0)447361150 FAX: 41(0)447361151

**Mitutoyo (Suisse) SA**  
Rue Galilée 4, 1400 Yverdon-les Bains, SWITZERLAND  
TEL: 41(0)244259422 FAX: 41(0)447361151

## Poland

**Mitutoyo Polska Sp.z o.o.**  
Ul.Graniczna 8A, 54-610 Wroclaw, POLAND  
TEL: 48(0)71354 83 50 FAX: 48(0)71354 83 55

## Czech Republic

**Mitutoyo Česko s.r.o.**  
Dubská 1626, 415 01 Teplice, CZECH REPUBLIC  
TEL: 420 417-514-011 FAX: 420 417-579-867

**Mitutoyo Česko s.r.o. M3 Solution Center Ivančice**  
Ke Karlovu 62/10, 664 91 Ivančice, CZECH REPUBLIC  
TEL: 420 417-514-011 FAX: 420 417-579-867

**Mitutoyo Česko s.r.o. M3 Solution Center Ostrava Mošnov**  
Mošnov 314, 742 51 Mošnov, CZECH REPUBLIC  
TEL: 420 417-514-050 FAX: 420 417-579-867

**Mitutoyo Česko s.r.o. Slovakia Branch**  
Hviezdoslavova 124, 017 01 Povážská Bystrica, SLOVAKIA  
TEL: 421 948-595-590

## Hungary

**Mitutoyo Hungária Kft.**  
Záhony utca 7, D-épület / fsz, 1031 Budapest, HUNGARY  
TEL: 36(0)1 2141447 FAX: 36(0)1 2141448

## Romania

**Mitutoyo Romania SRL**  
1A Drumul Garii Odai Street, showroom, Ground Floor,  
075100 OTOPENI-ILFOV, ROMANIA  
TEL: 40(0)311012088 FAX: 40(0)311012089

**Showroom in Brasov**

## Russian Federation

**Mitutoyo RUS LLC**  
13 Sharikopodshipnikovskaya, bld.2, 115088 Moscow,  
RUSSIAN FEDERATION  
TEL: 7 495 7450 752

## Finland

**Mitutoyo Scandinavia AB Finnish Branch**  
Viherkiitäjä 2A, 33960, Pirkkala, FINLAND  
TEL: 358(0)40 355 8498

## Austria

**Mitutoyo Austria GmbH**  
Johann Roithner Straße 131 A-4050 Traun, AUSTRIA  
TEL: 43(0)7229 23850 FAX: 43(0)7229 23850-90  
**Götzis Regional Showroom**  
Lasten Straße 48A 6840, AUSTRIA

## Singapore

**Mitutoyo Asia Pacific Pte. Ltd.**  
**Head office / M3 Solution Center**  
24 Kallang Avenue, Mitutoyo Building, SINGAPORE 339415  
TEL: (65)62942211 FAX: (65)62996666

## Malaysia

**Mitutoyo (Malaysia) Sdn. Bhd.**  
**Kuala Lumpur Head Office / M3 Solution Center**  
Mah Sing Integrated Industrial Park, 4, Jalan Utarid U5/14,  
Section U5, 40150 Shah Alam, Selangor, MALAYSIA  
TEL: (60)3-78459318 FAX: (60)3-78459346  
**Penang Branch office / M3 Solution Center**  
No.30, Persiaran Mahsuri 1/2, Sunway Tunas, 11900 Bayan  
Lepas, Penang, MALAYSIA  
TEL: (60)4-6411998 FAX: (60)4-6412998  
**Johor Branch office / M3 Solution Center**  
No. 70, Jalan Molek 1/28, Taman Molek, 81100 Johor Bahru,  
Johor, MALAYSIA  
TEL: (60)7-3521626 FAX: (60)7-3521628

## Thailand

**Mitutoyo(Thailand)Co., Ltd.**  
**Bangkok Head Office / M3 Solution Center**  
76/3-5, Chaengwattana Road, Kwaeng Anusaowaree, Khet  
Bangkaen, Bangkok 10220, THAILAND  
TEL: (66)2-080-3500 FAX: (66)2-521-6136

## Chonburi Branch / M3 Solution Center

7/1, Moo 3, Tambon Bowin, Amphur Sriracha, Chonburi  
20230, THAILAND

# SERVICE NETWORK

As of Jan 2019

TEL: (66)2-080-3563 FAX: (66)3-834-5788

## **Amata Nakorn Branch / M3 Solution Center**

700/199, Moo 1, Tambon Bankao, Amphur Phanthong,  
Chonburi 20160, THAILAND

TEL: (66)2-080-3565 FAX: (66)3-846-8978

## **Indonesia**

### **PT. Mitutoyo Indonesia**

#### **Head Office / M3 Solution Center**

Jalan Sriwijaya No.26 Desa cibatu Kec. Cikarang Selatan Kab.  
Bekasi 17530, INDONESIA

TEL: (62)21-2962 8600 FAX: (62)21-2962 8604

## **Vietnam**

### **Mitutoyo Vietnam Co., Ltd**

#### **Hanoi Head Office / M3 Solution Center**

No. 07-TT4, My Dinh - Me Tri Urban Zone, My Dinh 1 Ward,  
Nam Tu Liem District, Hanoi, VIETNAM

TEL: (84)24-3768-8963 FAX: (84)24-3768-8960

#### **Ho Chi Minh City Branch Office / M3 Solution Center**

123 Dien Bien Phu Street, Ward 15, Binh Thanh District,  
Ho Chi Minh City, VIETNAM

TEL: (84)28-3840-3489 FAX: (84)28-3840-3498

## **Mitutoyo Philippines, Inc.**

### **Head Office/ M3 Solution Center**

Unit 2103, Bldg 2 GMV Building 2, 107 North Main Avenue,  
Laguna Technopark, Binan, Laguna 4024, Philippines

TEL: (63)49 544 0272 FAX: (63)49 544 0272

## **India**

### **Mitutoyo South Asia Pvt. Ltd.**

#### **Head Office / M3 Solution Center**

C-122, Okhla Industrial Area, Phase-I, New Delhi-110 020,  
INDIA

TEL: 91(11)2637-2090 FAX: 91(11)2637-2636

#### **MSA Gurgaon technical center**

Plot No. 65, Phase-IV, Udyog Vihar, Gurgaon – 122016

TEL: 91(0124) – 2340294

#### **Mumbai Region Head office**

303, Sentinel Hiranandani Business Park Powai,  
Mumbai-400 076, INDIA

TEL: 91(22)2570-0684, 837, 839 FAX: 91(22)2570-0685

#### **Pune Office / M3 Solution Center**

G2/G3, Pride Kumar Senate, F.P. No. 402 Off. Senapati Bapat  
Road, Pune-411 016, INDIA

TEL: 91(20)6603-3643, 45, 46 FAX: 91(20)6603-3644

#### **Bengaluru Region Head office / M3 Solution Center**

No. 5, 100 Ft. Road, 17th Main, Koramangala, 4th Block,  
Bengaluru-560 034, INDIA

TEL: 91(80)2563-0946, 47, 48 FAX: 91(80)2563-0949

#### **Chennai Office / M3 Solution Center**

No. 624, Anna Salai Teynampet, Chennai-600 018, INDIA

TEL: 91(44)2432-8823, 24, 27, 28 FAX: 91(44)2432-8825

### **Kolkata Office**

Unit No. 1208, Om Tower, 32, J.L. Nehru Road, Kolkata-700  
071, INDIA

TEL: 91 33-22267088/40060635 FAX: (91)33-22266817

### **Ahmedabad Office/M3 Solution Center (Ahmedabad)**

A-104 & A-105, First Floor, Solitaire Corporate Park, Near  
Divya Bhaskar Press, S.G. Road, Ahmedabad - 380 015,  
INDIA

TEL: (91)079 - 29704902/903

### **Coimbatore Office (Coimbatore)**

Regus, Srivari Srimath, 3rd Floor, Door No: 1045, Avinashi  
Road, Coimbatore - 641 018, INDIA

TEL: (91)9345005663

## **Taiwan**

### **Mitutoyo Taiwan Co., Ltd. / M3 Solution Center Taipei**

4F., No.71, Zhouzi St., Neihu Dist., Taipei City 114, TAIWAN  
(R.O.C.)

TEL: 886(2)5573-5900 FAX: 886(2)8752-3267

### **Taichung Branch / M3 Solution Center Taichung**

1F., No.758, Zhongming S. Rd., South Dist., Taichung City 402,  
TAIWAN(R.O.C.)

TEL: 886(4)2262-9188 FAX: 886(4)2262-9166

### **Kaohsiung Branch / M3 Solution Center Kaohsiung**

1F., No.31-1, Haibian Rd., Lingya Dist., Kaohsiung City 802,  
TAIWAN (R.O.C.)

TEL: 886(7)334-6168 FAX: 886(7)334-6160

## **South Korea**

### **Mitutoyo Korea Corporation**

#### **Head Office / M3 Solution Center**

(Sanbon-Dong, Geumjeong High View Build.), 6F, 153-8,  
Ls-Ro, Gunpo-Si, Gyeonggi-Do, 15808 KOREA

TEL: 82(31)361-4200 FAX: 82(31)361-4202

#### **Busan Office / M3 Solution Center**

(3150-3, Daejeo 2-dong) 8, Yutongdanji 1-ro 49beon-gil,  
Gangseo-gu, Busan, 46721 KOREA

TEL: 82(51)718-2140 FAX: 82(51)324-0104

#### **Daegu Office / M3 Solution Center**

(Galsan-dong, Daegu Business Center), 301-Ho, 217,  
Seongseogongdan-ro, Dalseo-gu, Daegu 42704 KOREA

TEL: 82(53)593-5602 FAX: 82(53)593-5603

## **China**

### **Mitutoyo Measuring Instruments (Shanghai) Co., Ltd.**

12F, Nextage Business Center, No.1111 Pudong South Road,  
Pudong New District, Shanghai 200120, CHINA

TEL: 86(21)5836-0718 FAX: 86(21)5836-0717

### **Suzhou Office / M3 Solution Center (Suzhou)**

No. 46 Baiyu Road, Suzhou 215021, CHINA

TEL: 86(512)6522-1790 FAX: 86(512)6251-3420

## **Wuhan Office**

Room 1701, Wuhan Wanda Center, No. 96, Linjiang Road,  
Wuchang District, Wuhan Hubei 430060, CHINA  
TEL: 86(27)8544-8631 FAX: 86(27)8544-6227

## **Chengdu Office**

1-701, New Angle Plaza, 668# Jindong Road, Jinjiang District,  
Chengdu, Sichuan 610066, CHINA  
TEL: 86(28)8671-8936 FAX: 86(28)8671-9086

## **Hangzhou Office**

Room 804, Eastern International Business Center Building 1,  
No.600 Jinsha Road  
Hangzhou Economic and Technological Development Zone,  
310018, CHINA

TEL: 86(571)8288-0319 FAX: 86(571)8288-0320

## **Tianjin Office / M3 Solution Center Tianjin**

Room D 12/F, TEDA Building, No.256 Jie-fang Nan Road Hexi  
District, Tianjin 300042, CHINA

TEL: 86(22)5888-1700 FAX: 86(22)5888-1701

## **Changchun Office**

Room 815, 8F, Building A1, Upper East International No.3000  
Dongsheng Street, Erdao District, Changchun, Jilin, 130031,  
CHINA

TEL: 86(431)8192-6998 FAX: 86(431)8192-6998

## **Chongqing Office**

Room 1312, Building 3, Zhongyu Plaza, No.86, Hongjin  
Avenue, Longxi Street, Yubei District, Chongqing, 400000,  
CHINA

TEL: 86(23)6595-9950 FAX: 86(23)6595-9950

## **Qingdao Office**

Room 638, 6F, No.192 Zhengyang Road, Chengyang District,  
Qingdao, Shandong, 266109, CHINA

TEL: 86(532)8096-1936 FAX: 86(532)8096-1937

## **Xi'an Office**

Room 805, Xi'an International Trade Center, No. 196  
Xiaozhai East Road, Xi'an, 710061, CHINA

TEL: 86(29)8538-1380 FAX: 86(29)8538-1381

## **Dalian Office / M3 Solution Center Dalian**

Room 1008, Grand Central IFC, No.128 Jin ma Road,  
Economic Development Zone, Dalian 116600, CHINA

TEL: 86(411)8718 1212 FAX: 86(411)8754-7587

## **Zhengzhou Office**

Room1801,18/F,Unit1, Building No.23, Shangwu Inner Ring  
Road, Zhengdong New District, Zhengzhou City, Henan  
Province, 450018, CHINA

TEL: 86(371)6097-6436 FAX: 86(371)6097-6981

## **Mitutoyo Leepport Metrology (Hong Kong) Limited**

Room 818, 8/F, Vanta Industrial Centre, No.21-33, Tai Lin Pai  
Road, Kwai Chung, NT, Hong Kong

TEL: 86(852)2992-2088 FAX: 86(852)2670-2488

## **Mitutoyo Leepport Metrology (Dongguan) Limited /**

### **M3 Solution Center Dongguan**

No.26, Guan Chang Road, Chong Tou Zone, Chang An Town,

Dong Guan, 523855 CHINA

TEL: 86(769)8541 7715 FAX: 86(769)-8541 7745

## **Mitutoyo Leepport Metrology (Dongguan) Limited – Fuzhou office**

Room 2104, City Commercial Centre, No.129 Wu Yi Road N.,  
Fuzhou City, Fujian Province, CHINA

TEL: 86 591 8761 8095 FAX: 86 591 8761 8096

## **Mitutoyo Leepport Metrology (Dongguan) Limited – Changsha office**

Room 2207, Shiner International Plaza, No. 88, Kaiyuan  
Middle Road, Changsha City, Hunan, China

TEL: 86 731 8401 9276 FAX: 86 731 8401 9376

## **Mitutoyo Measuring Instruments (Suzhou) Co., Ltd.**

No. 46 Baiyu Road, Suzhou 215021, CHINA

TEL: 86(512)6252-2660 FAX: 86(512)6252-2580

## **U.S.A.**

### **Mitutoyo America Corporation**

965 Corporate Boulevard, Aurora, IL 60502, U.S.A.

TEL: 1-(630)820-9666 Toll Free No. 1-(888)648-8869

FAX: 1-(630)978-3501

### **M3 Solution Center-Illinois**

965 Corporate Boulevard, Aurora, IL 60502, U.S.A.

TEL: 1-(888)648-8869 FAX: 1-(630)978-3501

### **M3 Solution Center-Ohio**

6220 Hi-Tek Court, Mason, OH 45040, U.S.A.

TEL: 1-(888)648-8869 FAX: 1-(513)754-0718

### **M3 Solution Center-Michigan**

46850 Magellan Drive, Suite 100, Novi, MI 48377, U.S.A.

TEL: 1-(888)648-8869 FAX: 1-(248)926-0928

### **M3 Solution Center-California**

16925 E. Gale Avenue, City of Industry, CA 91745, U.S.A.

TEL: 1-(888)648-8869 FAX: 1-(626)369-3352

### **M3 Solution Center-North Carolina**

11515 Vanstory Drive, Suite 140, Huntersville, NC 28078, U.S.A.

TEL: 1-(888)648-8869 FAX: 1-(704)875-9273

### **M3 Solution Center-Alabama**

2100 Riverchase Center, Suite 106, Hoover, AL 35244, U.S.A.

TEL: 1-(888)648-8869 FAX: 1-(205)988-3423

### **M3 Solution Center-Washington**

1000 SW 34th Street Suite G, Renton, WA 98057 U.S.A.

TEL: 1-(888)648-8869

### **M3 Solution Center-Texas**

4560 Kendrick Plaza Drive, Suite 120, Houston, TX 77032,  
U.S.A.

TEL: 1-(888)648-8869 FAX: 1-(281)227-0937

### **M3 Solution Center-Massachusetts**

753 Forest Street, Suite 110, Marlborough, MA 01752, U.S.A.

TEL: 1-(888)648-8869 FAX: 1-(508)485-0782

### **Mitutoyo America Corporation Calibration Lab**

965 Corporate Boulevard, Aurora, IL 60502, U.S.A.

TEL: 1-(888)648-8869 FAX: 1-(630)978-6477

# SERVICE NETWORK

As of Jan 2019

## **Micro Encoder, Inc.**

11533 NE 118th Street, Kirkland, WA 98034-7111, U.S.A.

TEL: 1-(425)821-3906 FAX: 1-(425)821-3228

## **Micro Encoder Los Angeles, Inc.**

16925 E. Gale Avenue, City of Industry, CA 91745-1806 U.S.A.

TEL: 1-626-961-9661 FAX: 1-626-333-8019

## **Canada**

### **Mitutoyo Canada Inc.**

2121 Meadowvale Blvd., Mississauga, Ont. L5N 5N1.,

CANADA

TEL: 1-(905)821-1261 FAX: 1-(905)821-4968

### **Montreal Office**

7075 Place Robert-Joncas Suite 129, Montreal, Quebec H4M  
2Z2, CANADA

TEL: 1-(514)337-5994 FAX: 1-(514)337-4498

## **Brazil**

### **Mitutoyo Sul Americana Ltda.**

#### **Head office / M3 Solution Center / Factory**

Rodovia Índio Tibiriça 1555, Bairro Raffo, CEP 08655-000

Suzano – SP, Brasil

TEL: 55(11) 5643- 0040

## **Argentina**

### **Mitutoyo Sul Americana Ltda.**

#### **Argentina Branch / M3 Solution Center**

Av. B. Mitre 891/899 – C.P. (B1603CQD) Vicente López –Pcia.

Buenos Aires – Argentina

TEL: 54(11)4730-1433 FAX: 54(11)4730-1411

#### **Sucursal Cordoba / M3 Solution Center**

Av. Amadeo Sabattini, 1296, esq. Madrid B° Crisol Sur – CP  
5000, Cordoba, ARGENTINA

TEL/FAX: 54(351)456-6251

## **Mexico**

### **Mitutoyo Mexicana, S.A. de C.V.**

Prolongación Industria Eléctrica No. 15 Parque Industrial  
Naucalpan

Naucalpan de Juárez, Estado de México C.P. 53370, MÉXICO

TEL: 52(01-55)5312-5612

### **Monterrey Office/ M3 Solution Center Monterrey**

Blv. Interamericana No. 103, Parque Industrial FINSA,

C.P. 66636 Apodaca, N.L., MÉXICO

TEL: 52(01-81) 8398-8227/8228/8242/8244

FAX: 52(01-81) 8398-8226

### **Tijuana Office/ M3 Solution Center Tijuana**

Calle José María Velazco 10501-C, Col. Cd. Industrial Nueva

Tijuana, C.P. 22500 Tijuana, B.C., MÉXICO

TEL: 52(01-664) 647-5024

### **Querétaro Office / M3 Solution Center Querétaro**

Av. Cerro Blanco No.500-1, Colonia Centro Sur, Querétaro,

Querétaro, C.P. 76090, MÉXICO

TEL: 52(01-442)340-8018, 340-8019 and 340-8020

FAX: 52(01-442)340-8017

### **Mitutoyo Mexicana, S.A. de C.V. Querétaro Calibration Laboratory**

Av. Cerro Blanco 500 30 Centro Sur, Querétaro, Querétaro,

C.P. 76090, MÉXICO

TEL: 52(01-442)340-8018, 340-8019 and 340-8020

FAX: 52(01-442)340-8017

### **Aguascalientes Office / M3 Solution Center**

Av. Aguascalientes No. 622, Local 15 Centro Comercial El

Cilindro Fracc. Pulgas Pandas Norte, C.P. 20138,

Aguascalientes, Ags. MÉXICO

TEL: 52(01-449)174-4140 and 174-4143

### **Irapuato Office / M3 Solution Center**

Boulevard a Villas de Irapuato No. 1460 L.1 Col. Ejido

Irapuato C.P. 36643

Irapuato, Gto., MÉXICO

TEL: 52(01-462)144-1200 and 144-1400